



Suicidal Ideation Is Associated with Altered Variability of Fingertip Photo-Plethysmogram Signal in Depressed Patients

Ahsan H. Khandoker^{1,2*}, Veena Luthra³, Yousef Abouallaban³, Simanto Saha⁴,
Khawza I. U. Ahmed⁴, Raqibul Mostafa⁴, Nayeefa Chowdhury¹ and Herbert F. Jelinek^{5,6}

¹ Department of Biomedical Engineering, Khalifa University, Abu Dhabi, United Arab Emirates, ² Department of Electrical and Electronic Engineering, University of Melbourne, VIC, Australia, ³ American Center for Psychiatry and Neurology, Abu Dhabi, United Arab Emirates, ⁴ Department of Electrical and Electronic Engineering, United International University, Dhaka, Bangladesh, ⁵ School of Community Health and Centre for Research in Complex Systems, Charles Sturt University, Albury, NSW, Australia, ⁶ Australian School of Advanced Medicine, Macquarie University, Sydney, NSW, Australia

OPEN ACCESS

Edited by:

Zbigniew R. Struzik,
University of Tokyo, Japan

Reviewed by:

Julian Koenig,
Heidelberg University, Germany
Maurizio Pompili,
Sapienza Università di Roma, Italy

*Correspondence:

Ahsan H. Khandoker
ahsank@ieee.org

Specialty section:

This article was submitted to
Computational Physiology and
Medicine,
a section of the journal
Frontiers in Physiology

Received: 07 October 2016

Accepted: 29 June 2017

Published: 19 July 2017

Citation:

Khandoker AH, Luthra V,
Abouallaban Y, Saha S, Ahmed KIU,
Mostafa R, Chowdhury N and
Jelinek HF (2017) Suicidal Ideation Is
Associated with Altered Variability of
Fingertip Photo-Plethysmogram
Signal in Depressed Patients.
Front. Physiol. 8:501.
doi: 10.3389/fphys.2017.00501

Physiological and psychological underpinnings of suicidal behavior remain ill-defined and lessen timely diagnostic identification of this subgroup of patients. Arterial stiffness is associated with autonomic dysregulation and may be linked to major depressive disorder (MDD). The aim of this study was to investigate the association between arterial stiffness by photo-plethysmogram (PPG) in MDD with and without suicidal ideation (SI) by applying multiscale tone entropy (T-E) variability analysis. Sixty-one 10-min PPG recordings were analyzed from 29 control, 16 MDD patients with (MDDSI+) and 16 patients without SI (MDDSI-). MDD was based on a psychiatric evaluation and the Mini-International Neuropsychiatric Interview (MINI). Severity of depression was assessed using the Hamilton Depression Rating Scale (HAM-D). PPG features included peak (systole), trough (diastole), pulse wave amplitude (PWA), pulse transit time (PTT) and pulse wave velocity (PWV). Tone (Diastole) at all lags and Tone (PWA) at lags 8, 9, and 10 were found to be significantly different between the MDDSI+ and MDDSI- group. However, Tone (PWA) at all lags and Tone (PTT) at scales 3–10 were also significantly different between the MDDSI+ and CONT group. In contrast, Entropy (Systole), Entropy (Diastole) and Tone (Diastole) were significantly different between MDDSI- and CONT groups. The suicidal score was also positively correlated ($r = 0.39 \sim 0.47$; $p < 0.05$) with systolic and diastolic entropy values at lags 2–10. Multivariate logistic regression analysis and leave-one-out cross-validation were performed to study the effectiveness of multi-lag T-E features in predicting SI risk. The accuracy of predicting SI was 93.33% in classifying MDDSI+ and MDDSI- with diastolic T-E and lag between 2 and 10. After including anthropometric variables (Age, body mass index, and Waist Circumference), that accuracy increased to 96.67% for MDDSI+/- classification. Our findings suggest that tone-entropy based PPG variability can be used as an additional accurate diagnostic tool for patients with depression to identify SI.

Keywords: major depressive disorder, suicidal ideation, photo-plethysmogram, pulse wave, tone-entropy analysis, pulse wave variability

INTRODUCTION

Over 800,000 people die due to suicide every year and there are many more who attempt suicide (WHO, 2016). The global suicide rate was highest in low- and middle-income countries in 2015 with 78% and suicide accounted for 1.4% of all deaths worldwide, making it the 17th leading cause of death in 2015 (WHO, 2016). Over 90% of people who die by suicide have clinical depression or another diagnosable mental disorder (Leenaars, 1996; Soloff et al., 2000). Depressed individuals with suicidal risk might have been undiagnosed because of persistent ignorance about depression. Misperceptions by the public, and even some health providers, who interpret the disease to be a personal weakness in character, often lead to painful stigmatization of sufferers, and treatment avoidance. In the United Arab Emirates, apathy toward seeking professional mental health services by UAE citizens is associated with societal stigma, lack of awareness of mental health and lack of confidence in mental health-care providers (Chowdhury, 2016). Therefore, it has been recommended that physiological evidence-based diagnostic methods and interventions need to be implemented at a population, sub-population and individual level to prevent suicide and suicide attempts. Suggestions have been made that alternative diagnostic tools be used in conjunction with a psychiatric evaluation, or as a stand-alone screening, as part of a community health initiative; which may provide an additional source of information, allowing individuals at risk to be assessed.

Pathophysiological factors such as increased arterial stiffness adversely affect cognitive neurological function, with high pulsatile blood flow damaging cerebral micro-vessels. Progressive endothelial dysfunction, edema, hemorrhage and inflammation may then lead to depressive symptomatology as part of the clinical spectrum (Henry-Feugeas, 2009). Previous research has shown that patients with suicidal tendencies exhibited significant and more pronounced cardiac vagal withdrawal compared to both the patients without suicidal ideation and the healthy control group (Chang et al., 2012). Another study has suggested that suicidal ideation is related to altered serotonergic function, which also influences vascular tone and is possibly influenced by vagal output (Wells, 2008).

Arterial stiffness measures the rigidity of the arterial wall. Several different methods of assessing arterial stiffness have been proposed in the past (Mackenzie et al., 2002), including pulse pressure (difference between systolic and diastolic blood pressures), pulse wave velocity (PWV, which is speed at which the forward pressure wave is transmitted from the aorta through the vascular tree), vascular distensibility and compliance of brachial, femoral and carotid arteries by Ultrasound and MRI derived indices such as the stiffness index (β) [i.e., ratio of $\ln(\text{systolic}/\text{diastolic pressures})$ to (relative change in diameter)], augmentation index (the difference between the second and first systolic peaks) from arterial pressure waveform obtained by tonometry (Sato et al., 1993).

Photoplethysmography (PPG) has been used to record the finger peripheral blood volume pulse. This technique resembles that of pulse oximetry, and measures the transmission of infrared light through the finger and detecting changes in blood flow,

which is recorded as a blood volume waveform. It has been used to develop a stiffness index and a reflection index that are thought to reflect systemic arterial stiffness (Chowienczyk et al., 1999). A previous study (Bortolotto et al., 2000) that compared PPG of the finger blood volume pulse with pulse wave velocity (PWV) (Asmar et al., 1999), found that PWV correlated more closely with the expected influences of age and atherosclerosis, which influence vascular compliance. PPG provides potential uses in a psychiatric, mental health setting as it has the advantage of being relatively simple to administer and equipment is easily portable.

We hypothesize that suicidal ideation in depression may be associated with arterial stiffness as measured by PPG wave parameters (Systole, Diastole and Pulse Wave Amplitude, Pulse Transit Time, Pulse Wave Velocity) extracted from fingertip PPG signals. Recently, Khandoker et al. (2010) used tone-entropy analysis of beat-to-beat timing (RR intervals) in a study of autonomic control of heart rate variability (HRV) and demonstrated that sympatho-vagal balance can be detected in the time domain by tone-entropy (T-E). Tone reflected the sympatho-vagal balance of heart rate and changed consistently in post-exercise recovery as the (inhibiting) parasympathetic division became predominant (Oida et al., 1997). As with heart rate control, it was hypothesized here that T-E analysis would prove useful in revealing beat-to-beat pulse wave variability that is masked using traditional linear methods. T-E analysis has the advantage that it is not influenced by either the time period of data acquisition or baseline wander of the signal. An extension of T-E algorithm is multi-lag T-E analysis, which provides a more accurate characterization of the time signal as the heart beat influences beats 6-10 beats downstream, reflecting parasympathetic (up to 4 beats) and sympathetic influences (up to 10 beats) and hence also the pulse wave of interest in this study (Claudia et al., 2003; Karmakar et al., 2013).

Therefore, the aim of this study was to investigate the association of arterial pulse wave parameters in clinically depressed patient with and without suicidal ideation and a control group by using a multi-lag tone entropy analysis of PPG recordings.

METHODS

Subjects and Psychiatric Assessment

Thirty-two unmedicated MDD patients participated in the research. Sixteen were Suicidal Ideation (SI) positive [MDDSI+] and 16 MDD patients were without SI [MDDSI-]. Twenty-nine non-depressed participants were also included in the study at the American Center for Psychiatry and Neurology in Abu Dhabi. Al Ain District Ethics Committee approved the study (14/28) and all participants gave written consent. Diagnoses of the severity of MDD were made by the consultant psychiatrist (VL) using the Mini-International Neuropsychiatric Interview (MINI) version 5 (Sheehan et al., 1998); and the severity of clinical depression was assessed using the Hamilton Depression Rating Scale (HAM-D) (Williams, 1988). Exclusion criteria included: inadequate reading or verbal fluency in Arabic or English; significant cognitive impairment; other primary psychiatric diagnosis; active medical diagnoses of ischemic heart disease; diabetes; or the presence of

TABLE 1 | Patient's demographics and psychiatric scores.

| Variable | MDDSI+ | MDDSI- | CONT | p-value |
|--------------------------|----------------|----------------|---------------|-------------------|
| N | 16 | 16 | 29 | |
| Gender male,% | 5 (31.25%) | 3 (18.75%) | 12 (41.37%) | |
| Age (years) | 37.50 ± 10.37 | 32.31 ± 6.95 | 28.00 ± 6.35 | 0.00 [#] |
| WC (cm) | 95.50 ± 16.64 | 82.73 ± 10.89 | 76.24 ± 9.61 | 0.00 [#] |
| Height (cm) | 164.60 ± 10.22 | 164.44 ± 8.41 | 162.28 ± 9.78 | 0.66 |
| BMI (kg/m ²) | 34.77 ± 25.65 | 24.98 ± 3.27 | 23.89 ± 3.44 | 0.03 [#] |
| SBP (mmHg) | 114.00 ± 14.04 | 112.50 ± 13.90 | 110.34 ± 8.65 | 0.60 |
| DBP (mmHg) | 72.67 ± 7.99 | 71.25 ± 7.19 | 71.72 ± 7.59 | 0.87 |
| BDI | 36.06 ± 12.23 | 33.19 ± 11.55 | | 0.50 |
| GAD7 | 17.94 ± 11.03 | 14.56 ± 4.21 | | 0.26 |
| PHQ9 | 21.06 ± 12.49 | 18.81 ± 4.48 | | 0.50 |
| Suicidal score | 17.35 ± 7.25 | 0.92 ± 1.75 | | 0.00 [*] |

*MDDSI+ and MDDSI-; #CONT and MDDSI+. BMI, Body Mass Index; SBP, Systolic Blood Pressure; DBP, Diastolic Blood Pressure; BDI, Beck Depression Inventory; GAD7, General Anxiety Disorder; PHQ, Patients Health Questionnaire.

inflammatory illness within the preceding two years. All patients recruited in this study were diagnosed with MDDSI+/- at their first visit to the psychiatric clinic by the psychiatrist. The control group was interviewed by the psychiatrist for screening of mental illnesses, and deciding whether further psychiatric tests were required to confirm the diagnoses. In this study, none of the participants in the healthy control group were identified with mental health issues, and therefore did not complete the MINI interview and the other questionnaires. **Table 1** summarizes the demographics of participants for the three group cohorts.

The MINI is a well-validated, standardized, and structured short diagnostic interview that provides an evaluation of psychiatric diagnoses according to the American Psychiatric Association's Diagnostic and Statistical Manual for Mental Disorders; (Fifth edition); text revision (DSM-V); and ICD-10 criteria (Sheehan et al., 1998). Furthermore, the C module of the MINI, was used to estimate suicidal ideation among participants. This module is made up of nine questions. Questions C1-C8 explore and assess events in the past month, while question C9 takes account of suicide attempts made in a patient's lifetime. The module assesses suicidal behaviors including intent, planning and actual attempts at suicide. The minimum score for the C module is zero (0) and the maximum score is 38. Scores ranging from 1 to 8 points indicate a low suicide risk, whereas 9-16 points indicate moderate suicidal risk, and scores greater than 17 points indicate high suicide risk. Higher scores indicate greater suicidal ideation. In this study, MDD patients with scores more than 9 were considered to be MDDSI+ patients. All participants except the control group completed the Depression, Anxiety and Stress Scales (PHQ-9, GAD 7, and BDI) (Beck et al., 1988), which are reliable and valid self-report measures of depression, anxiety, and stress severity (**Table 1**).

Experiments

All participants underwent a supine resting ECG, respiration recording, and finger PPG (Powerlab ADInstruments).

Physiological signals were recorded over 10 min and the ECG recorded using a lead II configuration (Powerlab, ADInstruments, Australia). Data were captured on Labchart 7.1 with a sampling rate set at 1,000 Hz and a notch filter at 50 Hz. Temperature and humidity of the room were set at 24°C and 55% respectively. Participants were asked to abstain from coffee and cigarettes on the day of testing. However, physical activity and types of food intake were not controlled in this study, due to the nature of the mental health status of the patients to avoid anxiety and stress.

Feature Extraction from Arterial Pulse Signals

A typical example of a PPG signal with different features that can be extracted for analysis is shown in **Figure 1**.

Systole and Diastole

The peak and trough of each cycle of the arterial pulse signal represent the systole and diastole phase of the cardiac cycle respectively. The vertical distance between systole and diastole points is measured as pulse wave amplitude (PWA). The pulse transit time (PTT) is calculated as the time difference between the R peaks of the ECG signal and consecutive systole points (**Figure 1**). First all systoles and diastoles are detected as the local maximum and minimum points of the pulse signal. Then PWA is calculated by subtracting diastoles from immediately preceding systoles.

The Pulse Wave Velocity (PWV) was calculated using the following formula (Davies and Struthers, 2003): $PWV \text{ (cm/ms)} = [\text{height (cm)} \times BDC] / PTT \text{ (ms)}$. BDC = body correlation factor, and height = body length. BDC is 0.5 for adults when recorded at the finger for detection of the peripheral pulse wave as used in this study.

Multi-Lag T-E Analysis of Features Extracted from PPG Signal

Let, X_S represents the series corresponding to any of the Systole, Diastole, PWA, PTT, and PWV and defined as follows

$$X_S = \{X_1, X_2, \dots, X_N\} \quad (1)$$

where, S = Systole/Diastole/PWA/PTT/PWV, i = corresponding value in the ith cardiac cycle (beat) and N = the number of beats used in the analysis (N = 400).

In TE analysis, the percentile changes as beat to beat variation in Systole, Diastole, PWA, PTT or PWV are calculated after normalization by the previous beat as follows

$$PI_i = \frac{X_i - X_{i+1}}{X_i} \times 100 \quad (2)$$

The beat to beat escalation, i.e., $X_{i+1} > X_i$ refers to the increased Systole and Diastole individually whereas PWA depicts the increased difference between Systole and Diastole. In such a case, higher PTT depicts higher traveling time for blood between two arterial sites. In contrast, higher PWV depicts lesser traveling time for blood between two arterial sites.

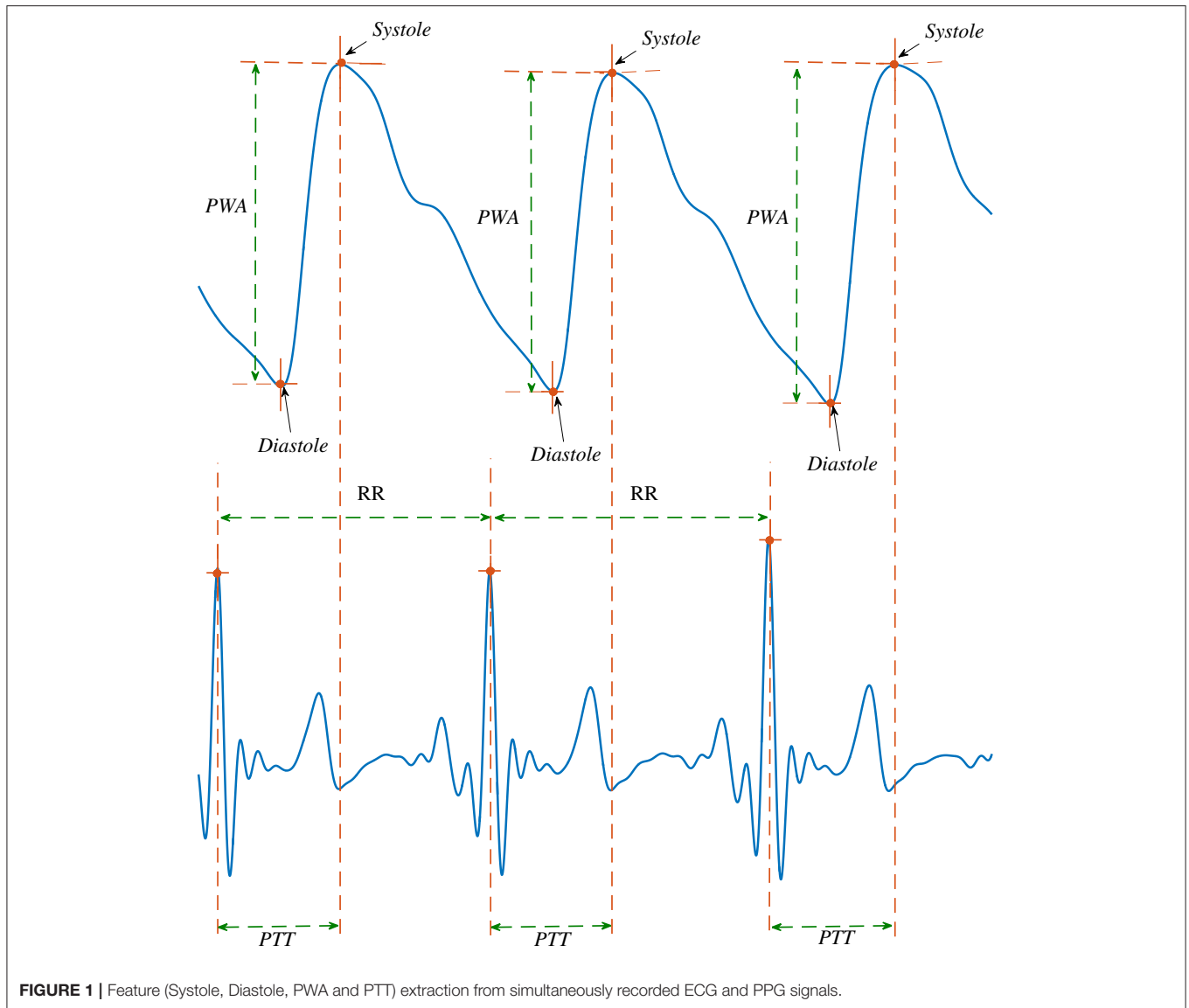


FIGURE 1 | Feature (Systole, Diastole, PWA and PTT) extraction from simultaneously recorded ECG and PPG signals.

Tone is defined as a first order moment (arithmetic average) of the PI time series as

$$\text{Tone} = \frac{1}{N-1} \sum_{i=1}^{N-1} \text{PI}_i \quad (3)$$

Entropy is defined from the probability distribution of the PI series by using Shannon's formula

$$\text{Entropy} = - \sum_{i=1}^n p(i) \log_2 p(i) \quad (4)$$

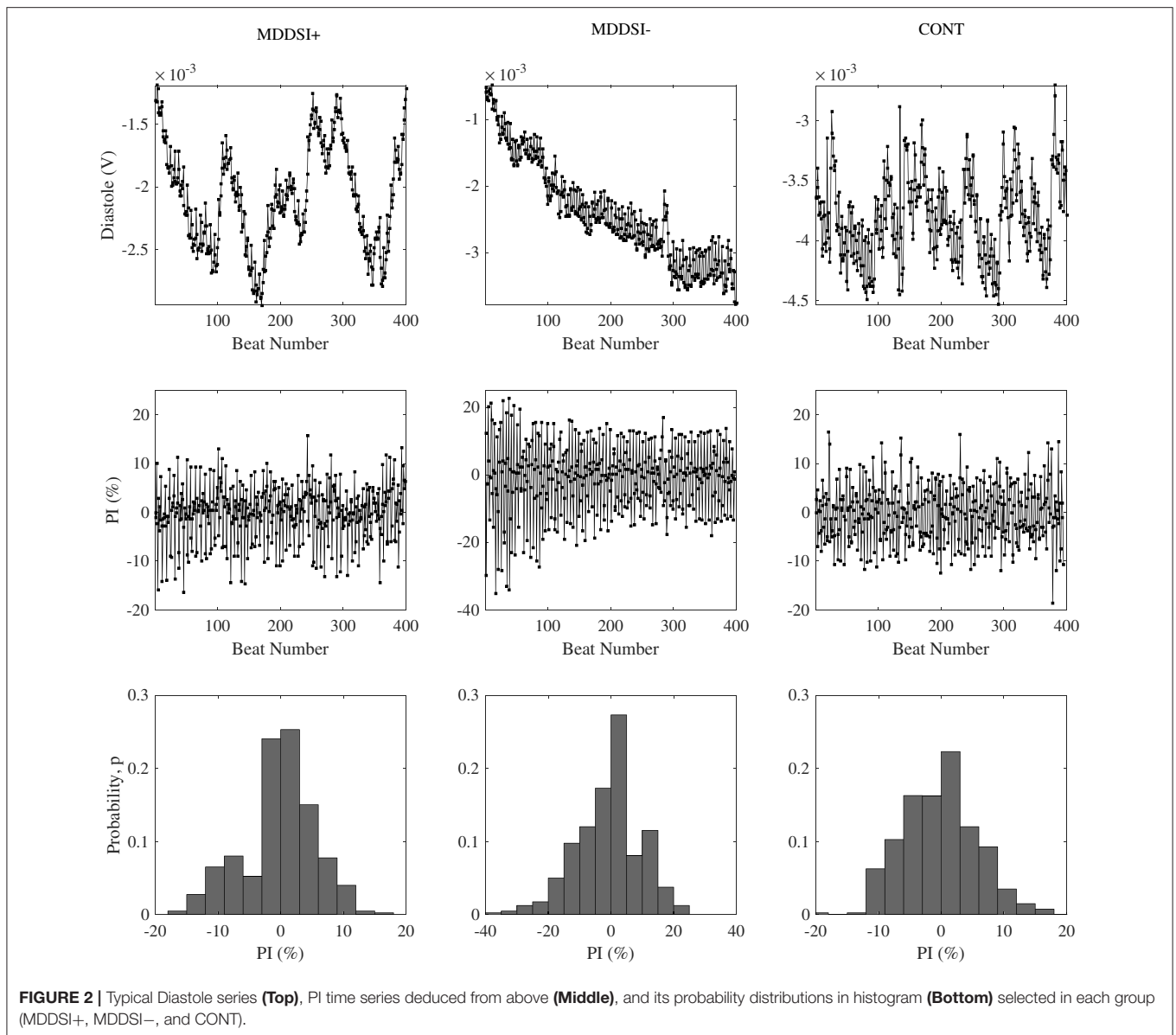
where $p(i)$ is the probability distribution of PI having values in the range $i < \text{PI} < i+1$, where i is an integer and n is the number of bins and $p(i) \neq 0$. **Figure 2** demonstrates examples of diastolic time series, its PI series and the probability distribution of PI

series for selected subjects from MDDSI+, MDDSI- and CONT groups.

For multi-lag T-E analysis, we have introduced the lag (m) in Equation (2). In the multi-lag T-E analysis, PI is expressed as the percentile change of the i th and $(i+m)$ th beats values with respect to the i th beat value and is defined as:

$$\text{PI}_i = \frac{X_i - X_{i+m}}{X_i} \times 100 \quad (5)$$

where, m is an integer and $m = 1$ represents the conventional T-E analysis. The detailed methodology of conventional and multi-lag T-E analysis has been described in previous reports (Khandoker et al., 2010; Karmakar et al., 2013). An important benefit of conventional ($\text{lag}, m = 1$) T-E analysis is that it is not influenced by the time period of data acquisition and increasing lag time reintroduces the sensitivity to recording length. We analyzed the



variation of tone and entropy values with a range of lags ($1 \leq m \leq 10$).

Several time domain features were also included in the analysis: mean, standard deviation (SD) and the square root of the mean squared difference (RMSSD) (Task force of the European Society of Cardiology, 1996) of the successive beat values of all PPG features.

Statistics

A Kruskal-Wallis nonparametric test of covariance (Quade test) (Quade, 1967; Maxwell et al., 1993) was performed to check the differences among healthy (CONT), MDD patients with suicidal ideation (MDDSI+), and MDD patients without suicidal ideation (MDDSI–) after adjusting the models for age, body mass index (BMI) and waist circumference (WC) as covariates. Values of $p < 0.05$ were considered as significant. Bonferroni

correction for multiple pairwise testing was used after p value was significant ($p < 0.05$). Correction was set at ($p < 0.0166$), calculated by dividing 0.05 by three groups. A non-parametric test was used because of the non-Gaussian distribution of the variables based on the Lilliefors test. The relative importance of T-E features was determined by receiver-operating curve (ROC) (Hanley and McNeil, 1983), with the area under the curve for each feature represented by the ROC area. A ROC area value of 0.5 indicates that the distributions of the variables are similar in both populations. Conversely, a ROC area value of 1.0 would mean that the distributions of the variables of the two populations do not overlap at all. Based on the ROC analysis, linear classifiers were then built for classifying each of the three groups in pairwise manner, i.e., MDDSI+ vs. MDDSI–, MDDSI– vs. CONT and CONT vs. MDDSI+. The classifiers performances were measured using the parameters like Optimal Threshold,

TABLE 3 | Mean \pm SD values of multilag tones.

| Feature | Lag, m | MDDSI+ | MDDSI- | CONT | Sig. | <i>p</i> -value |
|-----------------|--------|--------------------|--------------------|--------------------|------|-----------------|
| | | Mean \pm SD | Mean \pm SD | Mean \pm SD | | |
| Tone (Systole) | 1 | -0.002 \pm 0.005 | -0.004 \pm 0.004 | -0.001 \pm 0.006 | | 0.23 |
| | 2 | -0.001 \pm 0.010 | -0.006 \pm 0.008 | -0.002 \pm 0.012 | | 0.15 |
| | 3 | -0.001 \pm 0.014 | -0.009 \pm 0.011 | -0.002 \pm 0.019 | | 0.11 |
| | 4 | -0.001 \pm 0.019 | -0.012 \pm 0.014 | -0.003 \pm 0.026 | | 0.08 |
| | 5 | -0.001 \pm 0.023 | -0.014 \pm 0.018 | -0.003 \pm 0.032 | | 0.06 |
| | 6 | -0.002 \pm 0.027 | -0.017 \pm 0.021 | -0.004 \pm 0.038 | | 0.06 |
| | 7 | -0.002 \pm 0.031 | -0.020 \pm 0.025 | -0.004 \pm 0.044 | | 0.06 |
| | 8 | -0.003 \pm 0.036 | -0.023 \pm 0.028 | -0.004 \pm 0.050 | | 0.06 |
| | 9 | -0.003 \pm 0.040 | -0.026 \pm 0.031 | -0.005 \pm 0.056 | | 0.06 |
| | 10 | -0.004 \pm 0.044 | -0.028 \pm 0.034 | -0.005 \pm 0.062 | | 0.05 |
| Tone (Diastole) | 1 | -0.003 \pm 0.007 | 0.003 \pm 0.004 | -0.003 \pm 0.006 | *^ | 1.50E-03 |
| | 2 | -0.005 \pm 0.012 | 0.006 \pm 0.008 | -0.003 \pm 0.012 | *^ | 1.55E-03 |
| | 3 | -0.007 \pm 0.017 | 0.009 \pm 0.012 | -0.004 \pm 0.018 | *^ | 3.41E-03 |
| | 4 | -0.009 \pm 0.023 | 0.011 \pm 0.016 | -0.004 \pm 0.024 | *^ | 0.01 |
| | 5 | -0.009 \pm 0.027 | 0.014 \pm 0.021 | -0.005 \pm 0.031 | *^ | 0.01 |
| | 6 | -0.010 \pm 0.031 | 0.017 \pm 0.025 | -0.005 \pm 0.038 | *^ | 0.01 |
| | 7 | -0.012 \pm 0.036 | 0.019 \pm 0.029 | -0.005 \pm 0.044 | *^ | 0.01 |
| | 8 | -0.013 \pm 0.041 | 0.022 \pm 0.034 | -0.006 \pm 0.050 | *^ | 0.01 |
| | 9 | -0.015 \pm 0.045 | 0.025 \pm 0.038 | -0.006 \pm 0.057 | *^ | 0.02 |
| | 10 | -0.016 \pm 0.050 | 0.027 \pm 0.042 | -0.006 \pm 0.062 | * | 0.02 |
| Tone (PWA) | 1 | -0.563 \pm 0.763 | -1.186 \pm 1.276 | -1.156 \pm 1.150 | # | 0.06 |
| | 2 | -0.710 \pm 0.849 | -1.523 \pm 1.329 | -1.506 \pm 1.598 | # | 0.05 |
| | 3 | -0.752 \pm 0.919 | -1.701 \pm 1.278 | -1.596 \pm 1.382 | # | 0.03 |
| | 4 | -0.864 \pm 1.061 | -2.039 \pm 1.434 | -1.747 \pm 1.407 | # | 0.02 |
| | 5 | -0.985 \pm 1.147 | -2.335 \pm 1.514 | -2.025 \pm 1.688 | # | 0.02 |
| | 6 | -1.091 \pm 1.293 | -2.668 \pm 1.681 | -2.182 \pm 1.773 | # | 0.01 |
| | 7 | -1.175 \pm 1.372 | -3.012 \pm 1.792 | -2.397 \pm 1.979 | # | 0.01 |
| | 8 | -1.290 \pm 1.505 | -3.352 \pm 1.989 | -2.621 \pm 2.283 | *# | 0.01 |
| | 9 | -1.399 \pm 1.640 | -3.650 \pm 2.187 | -2.736 \pm 2.448 | *# | 0.01 |
| | 10 | -1.500 \pm 1.746 | -4.000 \pm 2.413 | -2.909 \pm 2.686 | *# | 0.01 |
| Tone (PTT) | 1 | -0.116 \pm 0.189 | -0.212 \pm 0.250 | -0.409 \pm 0.502 | | 0.09 |
| | 2 | -0.142 \pm 0.226 | -0.223 \pm 0.237 | -0.471 \pm 0.555 | | 0.06 |
| | 3 | -0.146 \pm 0.237 | -0.245 \pm 0.253 | -0.458 \pm 0.521 | # | 0.05 |
| | 4 | -0.148 \pm 0.243 | -0.278 \pm 0.292 | -0.472 \pm 0.522 | # | 0.03 |
| | 5 | -0.163 \pm 0.269 | -0.300 \pm 0.320 | -0.507 \pm 0.572 | # | 0.04 |
| | 6 | -0.164 \pm 0.281 | -0.309 \pm 0.331 | -0.521 \pm 0.576 | # | 0.03 |
| | 7 | -0.162 \pm 0.279 | -0.324 \pm 0.363 | -0.534 \pm 0.613 | # | 0.03 |
| | 8 | -0.164 \pm 0.275 | -0.344 \pm 0.387 | -0.550 \pm 0.628 | # | 0.02 |
| | 9 | -0.179 \pm 0.306 | -0.334 \pm 0.396 | -0.546 \pm 0.625 | # | 0.04 |
| | 10 | -0.191 \pm 0.330 | -0.328 \pm 0.384 | -0.551 \pm 0.636 | # | 0.05 |
| Tone (PWW) | 1 | -0.122 \pm 0.188 | -0.192 \pm 0.261 | -0.403 \pm 0.526 | | 0.14 |
| | 2 | -0.142 \pm 0.205 | -0.203 \pm 0.280 | -0.478 \pm 0.597 | | 0.11 |
| | 3 | -0.152 \pm 0.215 | -0.191 \pm 0.270 | -0.459 \pm 0.557 | | 0.12 |
| | 4 | -0.155 \pm 0.224 | -0.209 \pm 0.343 | -0.470 \pm 0.574 | | 0.1 |
| | 5 | -0.163 \pm 0.230 | -0.215 \pm 0.349 | -0.492 \pm 0.620 | | 0.13 |
| | 6 | -0.162 \pm 0.225 | -0.227 \pm 0.379 | -0.507 \pm 0.628 | | 0.1 |
| | 7 | -0.159 \pm 0.215 | -0.232 \pm 0.440 | -0.513 \pm 0.644 | | 0.07 |
| | 8 | -0.161 \pm 0.212 | -0.248 \pm 0.446 | -0.517 \pm 0.646 | | 0.06 |
| | 9 | -0.171 \pm 0.218 | -0.248 \pm 0.463 | -0.504 \pm 0.612 | | 0.07 |
| | 10 | -0.175 \pm 0.220 | -0.252 \pm 0.488 | -0.491 \pm 0.604 | | 0.09 |

*Significantly different between MDDSI+ and MDDSI-; ^Significantly different between MDDSI- vs. CONT; #Significantly different between CONT and MDDSI+.

TABLE 4 | Mean \pm SD values of multilag entropy.

| Feature | Lag, m | MDDSI+ | MDDSI- | CONT | Sig. | <i>p</i> -value |
|--------------------|--------|-------------------|-------------------|-------------------|------|-----------------|
| | | Mean \pm SD | Mean \pm SD | Mean \pm SD | | |
| Entropy (Systole) | 1 | 1.213 \pm 0.258 | 1.080 \pm 0.176 | 1.342 \pm 0.307 | ^# | 4.38E-05 |
| | 2 | 1.279 \pm 0.282 | 1.086 \pm 0.211 | 1.407 \pm 0.352 | ^# | 3.53E-05 |
| | 3 | 1.301 \pm 0.290 | 1.082 \pm 0.230 | 1.457 \pm 0.391 | ^# | 2.30E-05 |
| | 4 | 1.341 \pm 0.329 | 1.091 \pm 0.232 | 1.516 \pm 0.443 | ^# | 3.63E-05 |
| | 5 | 1.388 \pm 0.367 | 1.105 \pm 0.238 | 1.557 \pm 0.480 | ^# | 3.23E-05 |
| | 6 | 1.439 \pm 0.409 | 1.103 \pm 0.234 | 1.593 \pm 0.509 | ^# | 2.77E-05 |
| | 7 | 1.456 \pm 0.427 | 1.119 \pm 0.231 | 1.634 \pm 0.542 | ^# | 2.93E-05 |
| | 8 | 1.473 \pm 0.453 | 1.118 \pm 0.235 | 1.666 \pm 0.561 | ^# | 2.78E-05 |
| | 9 | 1.502 \pm 0.468 | 1.125 \pm 0.227 | 1.676 \pm 0.579 | ^# | 2.99E-05 |
| | 10 | 1.533 \pm 0.479 | 1.130 \pm 0.240 | 1.703 \pm 0.599 | ^# | 2.79E-05 |
| Entropy (Diastole) | 1 | 1.259 \pm 0.302 | 1.072 \pm 0.232 | 1.429 \pm 0.417 | ^# | 1.53E-04 |
| | 2 | 1.324 \pm 0.344 | 1.092 \pm 0.255 | 1.472 \pm 0.460 | ^# | 2.45E-04 |
| | 3 | 1.317 \pm 0.325 | 1.082 \pm 0.265 | 1.486 \pm 0.462 | ^# | 8.28E-05 |
| | 4 | 1.364 \pm 0.365 | 1.089 \pm 0.265 | 1.539 \pm 0.491 | ^# | 8.26E-05 |
| | 5 | 1.425 \pm 0.418 | 1.103 \pm 0.270 | 1.595 \pm 0.531 | ^# | 1.34E-04 |
| | 6 | 1.447 \pm 0.414 | 1.108 \pm 0.284 | 1.623 \pm 0.561 | ^# | 7.87E-05 |
| | 7 | 1.472 \pm 0.420 | 1.120 \pm 0.292 | 1.646 \pm 0.568 | ^# | 6.90E-05 |
| | 8 | 1.500 \pm 0.458 | 1.124 \pm 0.289 | 1.686 \pm 0.582 | ^# | 7.33E-05 |
| | 9 | 1.529 \pm 0.463 | 1.135 \pm 0.282 | 1.706 \pm 0.598 | ^# | 6.30E-05 |
| | 10 | 1.548 \pm 0.473 | 1.136 \pm 0.301 | 1.730 \pm 0.616 | ^# | 7.25E-05 |
| Entropy (PWA) | 1 | 4.539 \pm 0.862 | 5.100 \pm 0.632 | 5.184 \pm 0.526 | # | 9.53E-05 |
| | 2 | 4.913 \pm 0.745 | 5.385 \pm 0.567 | 5.467 \pm 0.506 | # | 1.03E-04 |
| | 3 | 4.999 \pm 0.742 | 5.441 \pm 0.621 | 5.543 \pm 0.537 | # | 9.09E-05 |
| | 4 | 5.128 \pm 0.682 | 5.579 \pm 0.636 | 5.639 \pm 0.539 | # | 7.11E-05 |
| | 5 | 5.253 \pm 0.645 | 5.674 \pm 0.553 | 5.742 \pm 0.556 | # | 8.77E-05 |
| | 6 | 5.345 \pm 0.634 | 5.776 \pm 0.564 | 5.832 \pm 0.547 | # | 6.55E-05 |
| | 7 | 5.433 \pm 0.628 | 5.879 \pm 0.595 | 5.887 \pm 0.571 | # | 9.14E-05 |
| | 8 | 5.508 \pm 0.604 | 5.923 \pm 0.582 | 5.939 \pm 0.582 | # | 7.75E-05 |
| | 9 | 5.567 \pm 0.611 | 5.977 \pm 0.578 | 5.975 \pm 0.596 | # | 7.75E-05 |
| | 10 | 5.601 \pm 0.604 | 6.013 \pm 0.573 | 6.013 \pm 0.593 | # | 9.49E-05 |
| Entropy (PTT) | 1 | 3.016 \pm 1.137 | 3.586 \pm 1.027 | 3.925 \pm 0.980 | # | 1.47E-04 |
| | 2 | 3.324 \pm 1.089 | 3.785 \pm 0.961 | 4.144 \pm 0.982 | # | 3.59E-04 |
| | 3 | 3.390 \pm 1.093 | 3.803 \pm 1.006 | 4.155 \pm 0.968 | # | 4.12E-04 |
| | 4 | 3.419 \pm 1.072 | 3.887 \pm 1.015 | 4.206 \pm 0.948 | # | 5.17E-04 |
| | 5 | 3.543 \pm 1.029 | 3.960 \pm 0.993 | 4.262 \pm 0.964 | # | 4.02E-04 |
| | 6 | 3.579 \pm 0.981 | 3.991 \pm 0.978 | 4.302 \pm 0.974 | # | 3.72E-04 |
| | 7 | 3.594 \pm 0.976 | 4.031 \pm 0.993 | 4.328 \pm 0.955 | # | 4.18E-04 |
| | 8 | 3.637 \pm 0.972 | 4.064 \pm 0.984 | 4.370 \pm 0.953 | # | 3.88E-04 |
| | 9 | 3.732 \pm 0.963 | 4.071 \pm 0.982 | 4.377 \pm 0.948 | # | 4.31E-04 |
| | 10 | 3.746 \pm 0.961 | 4.079 \pm 0.987 | 4.369 \pm 0.951 | # | 4.61E-04 |
| Entropy (PWV) | 1 | 3.017 \pm 1.136 | 3.585 \pm 1.022 | 3.922 \pm 0.980 | # | 1.47E-04 |
| | 2 | 3.324 \pm 1.087 | 3.782 \pm 0.961 | 4.147 \pm 0.980 | # | 3.07E-04 |
| | 3 | 3.387 \pm 1.098 | 3.790 \pm 1.008 | 4.157 \pm 0.968 | # | 3.67E-04 |
| | 4 | 3.416 \pm 1.075 | 3.886 \pm 1.015 | 4.205 \pm 0.952 | # | 5.34E-04 |
| | 5 | 3.539 \pm 1.028 | 3.962 \pm 0.989 | 4.262 \pm 0.965 | # | 4.02E-04 |
| | 6 | 3.585 \pm 0.978 | 3.994 \pm 0.980 | 4.301 \pm 0.967 | # | 3.73E-04 |
| | 7 | 3.594 \pm 0.981 | 4.034 \pm 0.992 | 4.333 \pm 0.958 | # | 4.02E-04 |
| | 8 | 3.636 \pm 0.976 | 4.062 \pm 0.992 | 4.372 \pm 0.954 | # | 4.33E-04 |
| | 9 | 3.722 \pm 0.956 | 4.067 \pm 0.986 | 4.370 \pm 0.945 | # | 3.87E-04 |
| | 10 | 3.742 \pm 0.954 | 4.079 \pm 0.984 | 4.365 \pm 0.953 | # | 4.64E-04 |

*Significantly different between MDDSI+ and MDDSI-; ^Significantly different between MDDSI- vs. CONT; #Significantly different between CONT and MDDSI+.

were better at discriminating between the MDDSI- and CONT groups (AUC 0.81 ~ 0.83 for lag 1-2). Similarly AUCs of Tone PWA and PTT were higher than other features and better at discriminating between MDDSI+ and CONT groups (Maximum AUC 0.79). Entropy-based analysis was sensitive to different aspects of the PPG recordings as shown in **Table 7**.

Entropies of Systole between lags 3–10 and Diastoles for all lags discriminated (Entropy Systoles: AUC = 0.79 ~ 0.82 for lags 3 ~ 10; Entropy Diastoles AUC = 0.80 ~ 0.85 for lags 1 ~ 10) between MDDSI- and CONT groups ($p < 0.01$). As for discrimination between MDDSI+ and MDDSI- groups, Entropy values of Diastole at lags 3, 6,7,9,10 were still acceptable (AUC > 0.80) but lower than the tone results (**Figure 4**).

Multiple logistic regression models and classification performances of the three models for combining diastolic T-E features with and without anthropometric features for Model 1 (MDDSI+/MDDSI-) and Model 2 (MDDSI-/CONT), and PTT T-E features for Model 3 (MDDSI+/CONT) are shown in **Tables 8A,B** respectively. Model 1 (**Table 8A**), built on diastolic T-E features was shown to be the best indicator (accuracy = 93.33%; PPV = 100% for MDDSI+ and NPV = 87.5% for MDDSI-) in classifying MDDSI+/MDDSI-

for all lags apart from lag 9. The second model (**Table 8A**), built on diastolic T-E features at lag 2,6, and 8 was able to accurately classify MDDSI-/CONT groups with accuracy of 93.18% (PPV = 87.5% for MDDSI- and NPV = 96.43% for CONT). The third model (**Table 8A**), which was built on PTT multilag T-E features classified MDDSI+/CONT groups at most lags with an acceptable accuracy for clinical risk assessment accuracy of 92.85% (PPV = 85.71% for MDDSI+ and NPV = 96.43% for CONT). Improvements were obtained when anthropometric features were added as the overall performance of all three models consequently improved (**Table 8B**). Applying a continuous model (in **Table 8C**) showed that BMI, WC, Tone and Entropy were significantly associated with suicidal scores. **Figure 5** showed the correlation ($r = 0.96$; $p = 0.001$) between the estimated and original suicidal scores.

Correlations between the suicidal score and individual features are summarized in **Table 9**. RMSSD and Entropy values of Systole (except lags 1 and 4) were significantly correlated with suicidal score ($p < 0.05$). RMSSD and Entropy values of Diastoles at all lags were also correlated with suicidal score ($p < 0.05$). The highest correlation coefficient was found to be 0.49 for Entropy of Diastole at lag 3.

TABLE 5 | Performance parameters from ROC analysis for assessing time domain features.

| Feature | | MDDSI+ vs. MDDSI- | | | | | MDDSI- vs. CONT | | | | | CONT vs. MDDSI+ | | | | |
|----------|-------|-------------------|------|------|------|------|-----------------|------|------|------|------|-----------------|------|------|------|------|
| | | AUC | Th | Sen | Spec | Acc | AUC | Th | Sen | Spec | Acc | AUC | Th | Sen | Spec | Acc |
| Systole | Mean | <u>0.75</u> | 0.62 | 0.94 | 0.53 | 0.74 | <u>0.71</u> | 0.64 | 0.72 | 0.69 | 0.71 | 0.57 | 0.64 | 0.07 | 1.00 | 0.68 |
| | SD | <u>0.72</u> | 0.63 | 0.88 | 0.67 | 0.77 | 0.68 | 0.65 | 0.62 | 0.88 | 0.71 | 0.50 | 0.59 | 0.13 | 0.97 | 0.68 |
| | RMSSD | 0.69 | 0.62 | 0.94 | 0.60 | 0.77 | <u>0.79</u> | 0.63 | 0.76 | 0.81 | 0.78 | 0.65 | 0.63 | 0.13 | 1.00 | 0.70 |
| Diastole | Mean | <u>0.77</u> | 0.64 | 0.81 | 0.73 | 0.77 | <u>0.73</u> | 0.63 | 0.83 | 0.56 | 0.73 | 0.55 | 0.62 | 0.07 | 1.00 | 0.68 |
| | SD | <u>0.73</u> | 0.63 | 0.81 | 0.67 | 0.74 | 0.69 | 0.65 | 0.59 | 0.88 | 0.69 | 0.50 | 0.59 | 0.00 | 1.00 | 0.66 |
| | RMSSD | <u>0.72</u> | 0.64 | 0.88 | 0.67 | 0.77 | <u>0.81</u> | 0.63 | 0.79 | 0.88 | 0.82 | 0.61 | 0.61 | 0.13 | 1.00 | 0.70 |
| PWA | Mean | <u>0.75</u> | 0.63 | 0.94 | 0.53 | 0.74 | <u>0.72</u> | 0.63 | 0.83 | 0.56 | 0.73 | 0.56 | 0.63 | 0.07 | 1.00 | 0.68 |
| | SD | <u>0.70</u> | 0.63 | 0.88 | 0.60 | 0.74 | 0.68 | 0.65 | 0.59 | 0.88 | 0.69 | 0.52 | 0.59 | 0.00 | 1.00 | 0.66 |
| | RMSSD | 0.69 | 0.63 | 0.75 | 0.67 | 0.71 | <u>0.78</u> | 0.63 | 0.72 | 0.81 | 0.76 | 0.65 | 0.62 | 0.13 | 1.00 | 0.70 |
| PTT | Mean | 0.61 | 0.65 | 0.40 | 0.86 | 0.62 | 0.62 | 0.65 | 0.86 | 0.40 | 0.70 | 0.51 | 0.59 | 0.07 | 1.00 | 0.70 |
| | SD | 0.60 | 0.61 | 0.73 | 0.57 | 0.66 | 0.56 | 0.65 | 0.93 | 0.20 | 0.68 | 0.69 | 0.61 | 0.36 | 0.93 | 0.74 |
| | RMSSD | 0.67 | 0.61 | 0.80 | 0.57 | 0.69 | 0.62 | 0.64 | 1.00 | 0.13 | 0.70 | <u>0.76</u> | 0.62 | 0.43 | 1.00 | 0.81 |
| PWV | Mean | 0.64 | 0.63 | 0.67 | 0.71 | 0.69 | 0.58 | 0.65 | 0.86 | 0.33 | 0.68 | 0.54 | 0.60 | 0.07 | 1.00 | 0.70 |
| | SD | 0.57 | 0.62 | 0.67 | 0.64 | 0.66 | 0.59 | 0.65 | 0.93 | 0.27 | 0.70 | 0.66 | 0.62 | 0.07 | 1.00 | 0.70 |
| | RMSSD | 0.65 | 0.62 | 0.67 | 0.64 | 0.66 | 0.61 | 0.64 | 1.00 | 0.20 | 0.73 | <u>0.76</u> | 0.62 | 0.36 | 1.00 | 0.79 |
| Age | Mean | 0.65 | 0.63 | 0.80 | 0.57 | 0.69 | 0.71 | 0.66 | 0.90 | 0.53 | 0.77 | 0.79 | 0.61 | 0.57 | 0.97 | 0.84 |
| BMI | Mean | 0.69 | 0.63 | 0.93 | 0.50 | 0.72 | 0.60 | 0.65 | 0.79 | 0.53 | 0.70 | 0.76 | 0.59 | 0.43 | 1.00 | 0.81 |
| WC | Mean | 0.73 | 0.61 | 0.87 | 0.57 | 0.72 | 0.67 | 0.62 | 1.00 | 0.20 | 0.73 | 0.84 | 0.64 | 0.57 | 1.00 | 0.86 |

*AUC, Area Under ROC; Th, Threshold; Sen, Sensitivity; Spec, Specificity; Acc, Accuracy. Mean, Standard deviation (SD) and RMSSD, Root Mean Squared of Successive Difference. Underlined values indicate the significant ($p < 0.05$) ones.

TABLE 6 | Performance parameters from ROC analysis of multilag tones.

| Feature | Lag, m | MDDSI+ vs. MDDSI- | | | | | MDDSI- vs. CONT | | | | | CONT vs. MDDSI+ | | | | |
|-----------------|--------|-------------------|------|------|------|------|-----------------|------|------|------|------|-----------------|------|------|------|------|
| | | AUC | Th | Sen | Spec | Acc | AUC | Th | Sen | Spec | Acc | AUC | Th | Sen | Spec | Acc |
| Tone (Systole) | 1 | 0.62 | 0.61 | 0.81 | 0.50 | 0.66 | 0.66 | 0.66 | 0.62 | 0.75 | 0.67 | 0.51 | 0.60 | 0.00 | 1.00 | 0.64 |
| | 2 | <u>0.71</u> | 0.61 | 0.81 | 0.63 | 0.72 | 0.67 | 0.66 | 0.69 | 0.63 | 0.67 | 0.52 | 0.59 | 0.19 | 0.93 | 0.67 |
| | 3 | <u>0.71</u> | 0.61 | 0.88 | 0.63 | 0.75 | 0.68 | 0.66 | 0.55 | 0.88 | 0.67 | 0.52 | 0.59 | 0.19 | 0.93 | 0.67 |
| | 4 | <u>0.71</u> | 0.61 | 0.88 | 0.63 | 0.75 | 0.69 | 0.66 | 0.66 | 0.75 | 0.69 | 0.52 | 0.59 | 0.19 | 0.93 | 0.67 |
| | 5 | <u>0.70</u> | 0.61 | 0.88 | 0.63 | 0.75 | <u>0.70</u> | 0.66 | 0.69 | 0.75 | 0.71 | 0.51 | 0.59 | 0.19 | 0.93 | 0.67 |
| | 6 | <u>0.70</u> | 0.61 | 0.81 | 0.63 | 0.72 | <u>0.70</u> | 0.66 | 0.69 | 0.75 | 0.71 | 0.50 | 0.59 | 0.19 | 0.93 | 0.67 |
| | 7 | <u>0.70</u> | 0.61 | 0.81 | 0.63 | 0.72 | <u>0.72</u> | 0.66 | 0.72 | 0.75 | 0.73 | 0.52 | 0.59 | 0.19 | 0.93 | 0.67 |
| | 8 | 0.69 | 0.61 | 1.00 | 0.44 | 0.72 | <u>0.71</u> | 0.66 | 0.66 | 0.81 | 0.71 | 0.53 | 0.59 | 0.19 | 0.93 | 0.67 |
| | 9 | 0.69 | 0.61 | 0.81 | 0.56 | 0.69 | <u>0.71</u> | 0.66 | 0.72 | 0.75 | 0.73 | 0.53 | 0.59 | 0.19 | 0.93 | 0.67 |
| | 10 | 0.68 | 0.61 | 0.81 | 0.56 | 0.69 | <u>0.72</u> | 0.66 | 0.72 | 0.75 | 0.73 | 0.53 | 0.59 | 0.19 | 0.93 | 0.67 |
| Tone (Diastole) | 1 | <u>0.84</u> | 0.63 | 0.81 | 0.81 | 0.81 | <u>0.83</u> | 0.65 | 0.76 | 0.88 | 0.80 | 0.52 | 0.59 | 0.13 | 0.97 | 0.67 |
| | 2 | <u>0.83</u> | 0.63 | 0.81 | 0.81 | 0.81 | <u>0.81</u> | 0.66 | 0.72 | 0.94 | 0.80 | 0.52 | 0.59 | 0.31 | 0.90 | 0.69 |
| | 3 | <u>0.82</u> | 0.63 | 0.81 | 0.81 | 0.81 | <u>0.77</u> | 0.65 | 0.76 | 0.81 | 0.78 | 0.55 | 0.60 | 0.25 | 0.93 | 0.69 |
| | 4 | <u>0.82</u> | 0.62 | 0.88 | 0.81 | 0.84 | <u>0.76</u> | 0.66 | 0.69 | 0.88 | 0.76 | 0.55 | 0.60 | 0.25 | 0.93 | 0.69 |
| | 5 | <u>0.81</u> | 0.62 | 0.81 | 0.81 | 0.81 | <u>0.75</u> | 0.66 | 0.69 | 0.88 | 0.76 | 0.53 | 0.59 | 0.25 | 0.90 | 0.67 |
| | 6 | <u>0.82</u> | 0.62 | 0.88 | 0.81 | 0.84 | <u>0.73</u> | 0.65 | 0.72 | 0.75 | 0.73 | 0.56 | 0.62 | 0.00 | 1.00 | 0.64 |
| | 7 | <u>0.82</u> | 0.62 | 0.88 | 0.81 | 0.84 | <u>0.72</u> | 0.66 | 0.62 | 0.88 | 0.71 | 0.56 | 0.62 | 0.00 | 1.00 | 0.64 |
| | 8 | <u>0.81</u> | 0.62 | 0.75 | 0.81 | 0.78 | <u>0.72</u> | 0.66 | 0.62 | 0.88 | 0.71 | 0.56 | 0.62 | 0.00 | 1.00 | 0.64 |
| | 9 | <u>0.80</u> | 0.62 | 0.75 | 0.81 | 0.78 | <u>0.71</u> | 0.65 | 0.69 | 0.75 | 0.71 | 0.57 | 0.62 | 0.00 | 1.00 | 0.64 |
| | 10 | <u>0.79</u> | 0.62 | 0.75 | 0.81 | 0.78 | 0.69 | 0.66 | 0.66 | 0.75 | 0.69 | 0.57 | 0.62 | 0.00 | 1.00 | 0.64 |
| Tone (PWA) | 1 | <u>0.75</u> | 0.61 | 0.94 | 0.60 | 0.77 | 0.54 | 0.65 | 1.00 | 0.06 | 0.67 | <u>0.70</u> | 0.61 | 0.27 | 1.00 | 0.75 |
| | 2 | <u>0.77</u> | 0.61 | 0.88 | 0.60 | 0.74 | 0.55 | 0.65 | 0.93 | 0.13 | 0.64 | <u>0.70</u> | 0.61 | 0.27 | 1.00 | 0.75 |
| | 3 | <u>0.78</u> | 0.61 | 0.88 | 0.67 | 0.77 | 0.58 | 0.65 | 0.97 | 0.13 | 0.67 | <u>0.71</u> | 0.62 | 0.20 | 1.00 | 0.73 |
| | 4 | <u>0.79</u> | 0.61 | 0.88 | 0.73 | 0.81 | 0.59 | 0.64 | 1.00 | 0.13 | 0.69 | <u>0.70</u> | 0.62 | 0.27 | 1.00 | 0.75 |
| | 5 | <u>0.78</u> | 0.60 | 0.94 | 0.73 | 0.84 | 0.62 | 0.63 | 1.00 | 0.06 | 0.67 | <u>0.70</u> | 0.62 | 0.27 | 1.00 | 0.75 |
| | 6 | <u>0.80</u> | 0.61 | 0.88 | 0.73 | 0.81 | 0.63 | 0.62 | 0.97 | 0.13 | 0.67 | <u>0.71</u> | 0.62 | 0.27 | 1.00 | 0.75 |
| | 7 | <u>0.80</u> | 0.60 | 0.94 | 0.73 | 0.84 | 0.66 | 0.66 | 0.72 | 0.63 | 0.69 | <u>0.71</u> | 0.62 | 0.27 | 1.00 | 0.75 |
| | 8 | <u>0.80</u> | 0.61 | 0.94 | 0.73 | 0.84 | 0.66 | 0.66 | 0.76 | 0.63 | 0.71 | <u>0.70</u> | 0.61 | 0.47 | 0.90 | 0.75 |
| | 9 | <u>0.80</u> | 0.61 | 0.94 | 0.73 | 0.84 | 0.69 | 0.66 | 0.76 | 0.63 | 0.71 | 0.68 | 0.61 | 0.47 | 0.90 | 0.75 |
| | 10 | <u>0.81</u> | 0.61 | 0.94 | 0.73 | 0.84 | <u>0.70</u> | 0.67 | 0.55 | 0.94 | 0.69 | 0.68 | 0.61 | 0.33 | 0.97 | 0.75 |
| Tone (PTT) | 1 | <u>0.70</u> | 0.61 | 0.80 | 0.64 | 0.72 | 0.60 | 0.64 | 1.00 | 0.20 | 0.73 | <u>0.79</u> | 0.60 | 0.57 | 1.00 | 0.86 |
| | 2 | 0.66 | 0.61 | 0.73 | 0.64 | 0.69 | 0.62 | 0.64 | 0.90 | 0.33 | 0.70 | <u>0.77</u> | 0.61 | 0.50 | 0.97 | 0.81 |
| | 3 | 0.68 | 0.61 | 0.80 | 0.64 | 0.72 | 0.63 | 0.64 | 0.93 | 0.33 | 0.73 | <u>0.77</u> | 0.61 | 0.64 | 0.93 | 0.84 |
| | 4 | 0.67 | 0.61 | 0.73 | 0.64 | 0.69 | 0.61 | 0.64 | 0.90 | 0.40 | 0.73 | <u>0.77</u> | 0.61 | 0.50 | 0.97 | 0.81 |
| | 5 | 0.63 | 0.62 | 0.60 | 0.71 | 0.66 | 0.60 | 0.64 | 0.93 | 0.33 | 0.73 | <u>0.76</u> | 0.61 | 0.57 | 0.93 | 0.81 |
| | 6 | 0.62 | 0.63 | 0.60 | 0.71 | 0.66 | 0.61 | 0.64 | 0.86 | 0.40 | 0.70 | <u>0.76</u> | 0.61 | 0.64 | 0.90 | 0.81 |
| | 7 | 0.61 | 0.63 | 0.60 | 0.71 | 0.66 | 0.61 | 0.64 | 0.93 | 0.33 | 0.73 | <u>0.76</u> | 0.61 | 0.64 | 0.90 | 0.81 |
| | 8 | 0.62 | 0.63 | 0.60 | 0.71 | 0.66 | 0.60 | 0.64 | 0.90 | 0.33 | 0.70 | <u>0.77</u> | 0.61 | 0.57 | 0.90 | 0.79 |
| | 9 | 0.60 | 0.62 | 0.60 | 0.71 | 0.66 | 0.60 | 0.64 | 0.90 | 0.33 | 0.70 | <u>0.75</u> | 0.61 | 0.57 | 0.90 | 0.79 |
| | 10 | 0.58 | 0.62 | 0.60 | 0.71 | 0.66 | 0.59 | 0.64 | 0.93 | 0.27 | 0.70 | <u>0.74</u> | 0.61 | 0.50 | 0.90 | 0.77 |
| Tone (PWW) | 1 | 0.60 | 0.62 | 0.60 | 0.71 | 0.66 | 0.61 | 0.64 | 0.86 | 0.33 | 0.68 | 0.67 | 0.60 | 0.36 | 0.86 | 0.70 |
| | 2 | 0.60 | 0.62 | 0.67 | 0.57 | 0.62 | 0.62 | 0.64 | 1.00 | 0.07 | 0.68 | 0.66 | 0.61 | 0.00 | 1.00 | 0.67 |
| | 3 | 0.57 | 0.62 | 0.87 | 0.36 | 0.62 | 0.63 | 0.64 | 1.00 | 0.07 | 0.68 | 0.65 | 0.61 | 0.00 | 1.00 | 0.67 |
| | 4 | 0.54 | 0.63 | 0.40 | 0.79 | 0.59 | 0.63 | 0.64 | 1.00 | 0.07 | 0.68 | 0.65 | 0.61 | 0.00 | 1.00 | 0.67 |
| | 5 | 0.53 | 0.63 | 0.40 | 0.79 | 0.59 | 0.61 | 0.64 | 1.00 | 0.07 | 0.68 | 0.64 | 0.61 | 0.00 | 1.00 | 0.67 |
| | 6 | 0.54 | 0.62 | 0.47 | 0.79 | 0.62 | 0.60 | 0.64 | 1.00 | 0.07 | 0.68 | 0.62 | 0.61 | 0.00 | 1.00 | 0.67 |
| | 7 | 0.51 | 0.62 | 0.40 | 0.79 | 0.59 | 0.61 | 0.64 | 1.00 | 0.07 | 0.68 | 0.63 | 0.61 | 0.00 | 1.00 | 0.67 |
| | 8 | 0.53 | 0.63 | 0.33 | 0.86 | 0.59 | 0.60 | 0.64 | 1.00 | 0.07 | 0.68 | 0.62 | 0.61 | 0.00 | 1.00 | 0.67 |
| | 9 | 0.50 | 0.62 | 0.40 | 0.86 | 0.62 | 0.60 | 0.64 | 1.00 | 0.07 | 0.68 | 0.62 | 0.60 | 0.86 | 0.62 | 0.70 |
| | 10 | 0.51 | 0.63 | 0.40 | 0.86 | 0.62 | 0.59 | 0.64 | 1.00 | 0.07 | 0.68 | 0.60 | 0.61 | 0.00 | 1.00 | 0.67 |

*AUC, Area Under ROC; Th, Threshold; Sen, Sensitivity; Spec, Specificity; Acc, Accuracy. Single underlined values–AUC ≥ 0.70 and double underlined values–AUC ≥ 0.80.

TABLE 7 | Performance parameters from ROC analysis of multilag entropy features.

| Feature | Lag, m | MDDSI+ vs. MDDSI- | | | | | MDDSI- vs. CONT | | | | | CONT vs. MDDSI+ | | | | |
|--------------------|--------|-------------------|------|------|------|------|-----------------|------|------|------|------|-----------------|------|------|------|------|
| | | AUC | Th | Sen | Spec | Acc | AUC | Th | Sen | Spec | Acc | AUC | Th | Sen | Spec | Acc |
| Entropy (Systole) | 1 | <u>0.71</u> | 0.63 | 0.88 | 0.63 | 0.75 | <u>0.75</u> | 0.64 | 0.66 | 0.94 | 0.76 | 0.60 | 0.62 | 0.06 | 1.00 | 0.67 |
| | 2 | <u>0.73</u> | 0.64 | 0.88 | 0.63 | 0.75 | <u>0.78</u> | 0.63 | 0.69 | 0.94 | 0.78 | 0.60 | 0.61 | 0.06 | 1.00 | 0.67 |
| | 3 | <u>0.77</u> | 0.64 | 0.94 | 0.69 | 0.81 | <u>0.80</u> | 0.63 | 0.76 | 0.94 | 0.82 | 0.61 | 0.61 | 0.00 | 1.00 | 0.64 |
| | 4 | <u>0.73</u> | 0.64 | 0.94 | 0.69 | 0.81 | <u>0.81</u> | 0.63 | 0.79 | 0.94 | 0.84 | 0.63 | 0.62 | 0.06 | 1.00 | 0.67 |
| | 5 | <u>0.72</u> | 0.64 | 0.94 | 0.69 | 0.81 | <u>0.79</u> | 0.63 | 0.79 | 0.94 | 0.84 | 0.59 | 0.61 | 0.06 | 1.00 | 0.67 |
| | 6 | <u>0.76</u> | 0.64 | 0.94 | 0.63 | 0.78 | <u>0.83</u> | 0.63 | 0.76 | 0.94 | 0.82 | 0.57 | 0.61 | 0.06 | 1.00 | 0.67 |
| | 7 | <u>0.73</u> | 0.64 | 0.94 | 0.63 | 0.78 | <u>0.80</u> | 0.63 | 0.79 | 0.88 | 0.82 | 0.57 | 0.61 | 0.06 | 1.00 | 0.67 |
| | 8 | <u>0.72</u> | 0.64 | 0.94 | 0.56 | 0.75 | <u>0.81</u> | 0.63 | 0.79 | 0.94 | 0.84 | 0.57 | 0.61 | 0.06 | 1.00 | 0.67 |
| | 9 | <u>0.71</u> | 0.64 | 0.88 | 0.63 | 0.75 | <u>0.81</u> | 0.63 | 0.79 | 0.94 | 0.84 | 0.58 | 0.61 | 0.06 | 1.00 | 0.67 |
| | 10 | <u>0.74</u> | 0.65 | 0.81 | 0.69 | 0.75 | <u>0.82</u> | 0.63 | 0.79 | 0.88 | 0.82 | 0.57 | 0.61 | 0.06 | 1.00 | 0.67 |
| Entropy (Diastole) | 1 | <u>0.78</u> | 0.64 | 0.94 | 0.63 | 0.78 | <u>0.85</u> | 0.63 | 0.76 | 0.94 | 0.82 | 0.61 | 0.61 | 0.13 | 0.97 | 0.67 |
| | 2 | <u>0.73</u> | 0.64 | 0.88 | 0.69 | 0.78 | <u>0.80</u> | 0.63 | 0.76 | 0.88 | 0.80 | 0.60 | 0.61 | 0.13 | 1.00 | 0.69 |
| | 3 | <u>0.84</u> | 0.64 | 0.88 | 0.81 | 0.84 | <u>0.83</u> | 0.63 | 0.76 | 0.94 | 0.82 | 0.59 | 0.61 | 0.00 | 1.00 | 0.64 |
| | 4 | <u>0.78</u> | 0.64 | 0.94 | 0.69 | 0.81 | <u>0.83</u> | 0.63 | 0.76 | 0.94 | 0.82 | 0.61 | 0.61 | 0.19 | 0.97 | 0.69 |
| | 5 | <u>0.79</u> | 0.64 | 0.81 | 0.75 | 0.78 | <u>0.84</u> | 0.62 | 0.79 | 0.88 | 0.82 | 0.60 | 0.61 | 0.06 | 1.00 | 0.67 |
| | 6 | <u>0.80</u> | 0.64 | 0.94 | 0.75 | 0.84 | <u>0.82</u> | 0.63 | 0.76 | 0.94 | 0.82 | 0.58 | 0.61 | 0.06 | 1.00 | 0.67 |
| | 7 | <u>0.80</u> | 0.64 | 0.94 | 0.75 | 0.84 | <u>0.82</u> | 0.63 | 0.79 | 0.94 | 0.84 | 0.59 | 0.61 | 0.19 | 0.97 | 0.69 |
| | 8 | <u>0.79</u> | 0.64 | 0.94 | 0.75 | 0.84 | <u>0.82</u> | 0.63 | 0.79 | 0.94 | 0.84 | 0.60 | 0.61 | 0.06 | 1.00 | 0.67 |
| | 9 | <u>0.82</u> | 0.64 | 0.94 | 0.81 | 0.88 | <u>0.82</u> | 0.63 | 0.79 | 0.94 | 0.84 | 0.59 | 0.61 | 0.13 | 1.00 | 0.69 |
| | 10 | <u>0.81</u> | 0.65 | 0.94 | 0.81 | 0.88 | <u>0.81</u> | 0.63 | 0.79 | 0.94 | 0.84 | 0.57 | 0.61 | 0.00 | 1.00 | 0.64 |
| Entropy (PWA) | 1 | 0.69 | 0.64 | 0.69 | 0.67 | 0.68 | 0.54 | 0.65 | 0.93 | 0.25 | 0.69 | <u>0.72</u> | 0.63 | 0.53 | 0.97 | 0.82 |
| | 2 | 0.68 | 0.64 | 0.69 | 0.67 | 0.68 | 0.54 | 0.64 | 0.97 | 0.19 | 0.69 | <u>0.71</u> | 0.63 | 0.47 | 0.93 | 0.77 |
| | 3 | 0.66 | 0.62 | 0.75 | 0.60 | 0.68 | 0.55 | 0.65 | 0.90 | 0.25 | 0.67 | <u>0.72</u> | 0.61 | 0.53 | 0.90 | 0.77 |
| | 4 | 0.68 | 0.63 | 0.75 | 0.67 | 0.71 | 0.53 | 0.64 | 1.00 | 0.06 | 0.67 | <u>0.72</u> | 0.62 | 0.47 | 0.90 | 0.75 |
| | 5 | 0.69 | 0.60 | 0.94 | 0.40 | 0.68 | 0.54 | 0.65 | 0.86 | 0.25 | 0.64 | <u>0.71</u> | 0.62 | 0.47 | 0.90 | 0.75 |
| | 6 | <u>0.71</u> | 0.62 | 0.69 | 0.67 | 0.68 | 0.52 | 0.65 | 0.90 | 0.19 | 0.64 | <u>0.71</u> | 0.61 | 0.53 | 0.90 | 0.77 |
| | 7 | <u>0.72</u> | 0.62 | 0.81 | 0.60 | 0.71 | 0.50 | 0.66 | 0.90 | 0.19 | 0.64 | <u>0.71</u> | 0.61 | 0.47 | 0.90 | 0.75 |
| | 8 | <u>0.70</u> | 0.63 | 0.56 | 0.80 | 0.68 | 0.51 | 0.65 | 0.90 | 0.19 | 0.64 | 0.69 | 0.61 | 0.40 | 0.90 | 0.73 |
| | 9 | 0.69 | 0.62 | 0.69 | 0.67 | 0.68 | 0.50 | 0.66 | 0.86 | 0.25 | 0.64 | 0.67 | 0.64 | 0.20 | 0.97 | 0.70 |
| | 10 | 0.69 | 0.62 | 0.63 | 0.73 | 0.68 | 0.52 | 0.66 | 0.86 | 0.25 | 0.64 | 0.68 | 0.61 | 0.40 | 0.90 | 0.73 |
| Entropy (PTT) | 1 | 0.66 | 0.64 | 0.60 | 0.71 | 0.66 | 0.58 | 0.64 | 0.90 | 0.33 | 0.70 | <u>0.73</u> | 0.64 | 0.36 | 1.00 | 0.79 |
| | 2 | 0.64 | 0.62 | 0.73 | 0.64 | 0.69 | 0.60 | 0.63 | 1.00 | 0.13 | 0.70 | <u>0.72</u> | 0.63 | 0.29 | 1.00 | 0.77 |
| | 3 | 0.60 | 0.61 | 0.80 | 0.50 | 0.66 | 0.60 | 0.63 | 1.00 | 0.20 | 0.73 | <u>0.71</u> | 0.63 | 0.29 | 1.00 | 0.77 |
| | 4 | 0.65 | 0.61 | 0.80 | 0.50 | 0.66 | 0.60 | 0.64 | 0.90 | 0.33 | 0.70 | <u>0.73</u> | 0.62 | 0.50 | 0.93 | 0.79 |
| | 5 | 0.63 | 0.61 | 0.80 | 0.50 | 0.66 | 0.60 | 0.64 | 0.90 | 0.33 | 0.70 | 0.69 | 0.62 | 0.50 | 0.90 | 0.77 |
| | 6 | 0.63 | 0.61 | 0.80 | 0.50 | 0.66 | 0.60 | 0.63 | 0.97 | 0.20 | 0.70 | <u>0.71</u> | 0.62 | 0.50 | 0.90 | 0.77 |
| | 7 | 0.63 | 0.64 | 0.53 | 0.71 | 0.62 | 0.60 | 0.63 | 1.00 | 0.20 | 0.73 | <u>0.73</u> | 0.63 | 0.29 | 1.00 | 0.77 |
| | 8 | 0.62 | 0.64 | 0.53 | 0.71 | 0.62 | 0.60 | 0.63 | 1.00 | 0.13 | 0.70 | <u>0.71</u> | 0.63 | 0.29 | 1.00 | 0.77 |
| | 9 | 0.59 | 0.62 | 0.73 | 0.50 | 0.62 | 0.60 | 0.64 | 0.97 | 0.20 | 0.70 | <u>0.70</u> | 0.62 | 0.43 | 0.90 | 0.74 |
| | 10 | 0.59 | 0.62 | 0.73 | 0.50 | 0.62 | 0.60 | 0.64 | 1.00 | 0.20 | 0.73 | 0.69 | 0.63 | 0.21 | 1.00 | 0.74 |
| Entropy (PWV) | 1 | 0.66 | 0.64 | 0.60 | 0.71 | 0.66 | 0.58 | 0.64 | 0.90 | 0.33 | 0.70 | <u>0.74</u> | 0.63 | 0.43 | 1.00 | 0.81 |
| | 2 | 0.64 | 0.62 | 0.73 | 0.64 | 0.69 | 0.60 | 0.63 | 1.00 | 0.13 | 0.70 | <u>0.72</u> | 0.63 | 0.29 | 1.00 | 0.77 |
| | 3 | 0.60 | 0.61 | 0.80 | 0.50 | 0.66 | 0.60 | 0.63 | 1.00 | 0.20 | 0.73 | <u>0.71</u> | 0.63 | 0.29 | 1.00 | 0.77 |
| | 4 | 0.64 | 0.61 | 0.80 | 0.50 | 0.66 | 0.60 | 0.64 | 0.90 | 0.33 | 0.70 | <u>0.73</u> | 0.62 | 0.50 | 0.93 | 0.79 |
| | 5 | 0.62 | 0.61 | 0.80 | 0.50 | 0.66 | 0.60 | 0.64 | 0.90 | 0.33 | 0.70 | <u>0.70</u> | 0.62 | 0.50 | 0.90 | 0.77 |
| | 6 | 0.63 | 0.61 | 0.80 | 0.50 | 0.66 | 0.60 | 0.64 | 0.97 | 0.20 | 0.70 | <u>0.71</u> | 0.62 | 0.50 | 0.90 | 0.77 |
| | 7 | 0.64 | 0.64 | 0.53 | 0.71 | 0.62 | 0.60 | 0.63 | 1.00 | 0.20 | 0.73 | <u>0.72</u> | 0.63 | 0.29 | 1.00 | 0.77 |
| | 8 | 0.63 | 0.64 | 0.53 | 0.71 | 0.62 | 0.60 | 0.63 | 1.00 | 0.13 | 0.70 | <u>0.72</u> | 0.63 | 0.29 | 1.00 | 0.77 |
| | 9 | 0.59 | 0.62 | 0.73 | 0.50 | 0.62 | 0.60 | 0.64 | 0.97 | 0.20 | 0.70 | <u>0.70</u> | 0.62 | 0.43 | 0.90 | 0.74 |
| | 10 | 0.59 | 0.62 | 0.73 | 0.50 | 0.62 | 0.60 | 0.64 | 1.00 | 0.20 | 0.73 | 0.69 | 0.63 | 0.21 | 1.00 | 0.74 |

*AUC, Area Under ROC; Th, Threshold; Sen, Sensitivity; Spec, Specificity; Acc-Accuracy. Single underlined values mean AUC ≥ 0.70 and double underlined values mean AUC ≥ 0.80.

TABLE 8A | Multiple stepwise logistic regression models for predicting MDDSI+/- from multilag tone entropy features.

| | Estimate | SE | t-stats | p-value | Stats | Performance |
|---|----------|-------|---------|----------|---------------------------------|--------------|
| MODEL 1 DIASTOLE (MDDSI+/MDDSI-) | | | | | | |
| Intercept | 7.43 | 11.72 | 0.63 | 0.53 | $F = 2.8$ | AUC = 0.96 |
| Entropy 2 | -6.39 | 1.92 | -3.33 | 3.69E-03 | $p = 0.03,$ $R^2 = 0.40$ | Acc = 93.33% |
| Tone 2 | -25.98 | 12.07 | -2.15 | 0.05 | | PPV = 100% |
| Entropy 3 | 5.40 | 2.10 | 2.57 | 0.02 | | NPV = 87.5% |
| Entropy 4 | 6.14 | 2.69 | 2.28 | 0.03 | | |
| Tone 4 | 37.73 | 14.67 | 2.57 | 0.02 | | |
| Tone 5 | -68.21 | 22.02 | -3.10 | 0.01 | | |
| Tone 6 | 108.51 | 30.17 | 3.60 | 2.06E-03 | | |
| Entropy 8 | -9.20 | 3.76 | -2.44 | 0.03 | | |
| Tone 8 | -78.96 | 23.18 | -3.41 | 3.14E-03 | | |
| Entropy 10 | 6.12 | 2.54 | 2.40 | 0.03 | | |
| Tone 10 | 22.32 | 8.83 | 2.53 | 0.02 | | |
| MODEL 2 DIASTOLE (MDDSI-/CONT) | | | | | | |
| Intercept | -16.92 | 5.17 | -3.27 | 2.23E-03 | $F = 7.6$ | AUC = 0.96 |
| Tone 2 | 12.61 | 3.72 | 3.3873 | 1.62E-03 | $p = 1.26E-04,$ $R^2 = 0.50$ | Acc = 93.18% |
| Entropy 2 | 2.02 | 1.01 | 2.01 | 0.05 | | PPV = 87.5% |
| Tone 6 | -3.89 | 1.21 | -3.20 | 2.71E-03 | | NPV = 96.43% |
| Entropy 8 | -1.96 | 0.89 | -2.21 | 0.03 | | |
| MODEL 3 PTT (MDDSI+/CONT) | | | | | | |
| Intercept | -0.03 | 0.40 | -0.09 | 0.93 | $F = 4.71$ | AUC = 0.97 |
| Entropy 1 | -1.12 | 0.27 | -4.23 | 2.02E-04 | $p = 3.47E-04,$ $R^2 = 0.38$ | Acc = 92.85% |
| Entropy 3 | 2.77 | 0.69 | 4.04 | 3.44E-04 | | PPV = 85.71% |
| Tone 3 | 0.38 | 0.16 | 2.42 | 0.02 | | NPV = 96.43% |
| Entropy 4 | -2.63 | 0.70 | -3.76 | 7.30E-04 | | |
| Tone 4 | -0.46 | 0.22 | -2.10 | 0.04 | | |
| Tone 5 | -0.26 | 0.14 | -1.84 | 0.08 | | |
| Tone 6 | 0.70 | 0.21 | 3.39 | 2.00E-03 | | |
| Tone 7 | -0.66 | 0.18 | -3.72 | 8.28E-04 | | |
| Tone 8 | 0.72 | 0.16 | 4.48 | 1.00E-04 | | |
| Entropy 10 | 0.98 | 0.35 | 2.84 | 0.01 | | |
| Tone 10 | -0.38 | 0.09 | -4.37 | 1.38E-04 | | |

AUC, Area Under ROC; Acc, Accuracy; PPV, Positive Predictive Value; NPV, Negative Predictive Value.

DISCUSSION

This study examined whether or not photo-plethysmography could be used for monitoring MDD patients to identify suicidal risk. The main finding was that suicidal ideation in MDD patients correlated with arterial pulse wave features. Univariate analyses showed that Tone (Diastole) and Entropy (Diastole) values at all lags were the best discriminator (AUC > 0.8) between MDDSI+/MDDSI- and between MDDSI-/CONT groups (Figure 3). Multivariate logistic regression modeling showed that suicidal risk was significantly associated with Tone and Entropy values at lags more than 1, which justified the importance of using T-E features at higher lags. Moreover, as indicated by the results of logistic regression analysis, the feature set Tone and Entropy of Diastole demonstrated statistically significant

TABLE 8B | Multiple stepwise logistic regression models for predicting MDDSI+/-.

| | Estimate | SE | t-stats | p-value | F-stats | Performance |
|---|----------|----------|---------|----------|----------------|--------------|
| MODEL 1 DIASTOLE (MDDSI+/MDDSI-) | | | | | | |
| Intercept | -23.15 | 12.54 | -1.85 | 0.08 | $F = 3.99$ | AUC = 0.99 |
| WC | 0.01 | 0.01 | 2.50 | 2.35E-02 | $p = 0.01$ | Acc = 96.67% |
| Tone1 | 39.14 | 12.00 | 3.26 | 4.91E-03 | $R^2 = 0.11$ | PPV = 100% |
| Entropy2 | -6.29 | 1.82 | -3.45 | 3.30E-03 | | NPV = 93.75% |
| Tone2 | -55.26 | 14.89 | -3.71 | 1.89E-03 | | |
| Entropy3 | 8.53 | 2.13 | 4.00 | 1.03E-03 | | |
| Entropy4 | 7.25 | 2.86 | 2.54 | 0.02 | | |
| Tone4 | 38.06 | 11.29 | 3.37 | 3.88E-03 | | |
| Tone5 | -67.73 | 17.28 | -3.92 | 1.22E-03 | | |
| Tone6 | 117.38 | 25.48 | 4.61 | 2.91E-04 | | |
| Entropy7 | -13.89 | 3.83 | -3.62 | 2.29E-03 | | |
| Tone 9 | -88.62 | 21.47 | -4.13 | 7.90E-04 | | |
| Entropy10 | 7.14 | 2.09 | 3.41 | 3.57E-03 | | |
| Tone10 | 26.81 | 8.31 | 3.23 | 0.01 | | |
| MODEL 2 DIASTOLE (MDDSI-/CONT) | | | | | | |
| Intercept | -18.09 | 4.48 | -4.04 | 2.71E-04 | $F = 8.08$ | AUC = 0.98 |
| Age | 0.02 | 0.01 | 2.53 | 1.60E-02 | $p = 6.87E-06$ | Acc = 93.18% |
| BMI | -0.07 | 0.03 | -2.54 | 1.55E-02 | $R^2 = 0.11$ | PPV = 87.5% |
| WC | 0.03 | 0.01 | 3.34 | 1.96E-03 | | NPV = 96.43% |
| Tone2 | 12.73 | 3.23 | 3.94 | 3.54E-04 | | |
| Entropy5 | 2.53 | 0.91 | 2.78 | 8.60E-03 | | |
| Tone6 | -4.02 | 1.05 | -3.83 | 4.95E-04 | | |
| Entropy8 | -2.42 | 0.80 | -3.01 | 4.71E-03 | | |
| MODEL 3 PTT (MDDSI+/CONT) | | | | | | |
| Intercept | -1.86 | 0.44 | -4.26 | 1.70E-04 | $F = 13.1$ | AUC = 0.99 |
| Age | 0.02 | 4.79E-03 | 4.20 | 2.00E-04 | $p = 1.93E-08$ | Acc = 97.62% |
| WC | 0.01 | 3.00E-03 | 4.35 | 1.29E-04 | $R^2 = 0.06$ | PPV = 92.86% |
| Entropy1 | -0.88 | 0.17 | -5.08 | 1.58E-05 | | NPV = 100% |
| Entropy3 | 0.70 | 0.31 | 2.22 | 3.33E-02 | | |
| Entropy7 | -0.97 | 0.52 | -1.87 | 0.07 | | |
| Tone7 | -0.16 | 0.06 | -2.77 | 0.01 | | |
| Tone8 | 0.47 | 0.12 | 3.84 | 5.46E-04 | | |
| Tone9 | -0.31 | 0.09 | -3.29 | 2.47E-03 | | |
| Entropy10 | 1.18 | 0.39 | 3.01 | 5.08E-03 | | |

AUC, Area Under ROC; Acc, Accuracy; PPV, Positive Predictive Value; NPV, Negative Predictive Value. BMI, Body Mass Index; WC, Waist Circumference.

predictive power for assessing MDD patients at risk of suicidal ideation. The identified predictors Tone and Entropy were shown to classify MDDSI-patients (without suicidal ideation) from the control group, which could eventually also help mental health care providers screen the risk of MDD without suicidal ideation in an efficient, convenient, and non-invasive manner. However, the time domain RMSSD parameter, which is analogous to short lags and an indicator of parasympathetic function, did not discriminate very well between the groups, suggesting that depression and suicidal ideation may be more sympathetically driven as reported by previous studies (Barton et al., 2007; Licht et al., 2012). Considering the importance of multilag analysis, higher lags mean slower oscillations in PPG features and are more

TABLE 8C | Multiple stepwise regression models for predicting suicidal scores (SC) of MDDSI+/- patients as a continuous measure.

| | Estimate | SE | t-stats | p-value | F-stats |
|---|----------|----------|---------|----------|----------------------------|
| MODEL 1 DIASTOLE (MDDSI+/MDDSI-) | | | | | |
| Intercept | -102.91 | 14.90 | -6.91 | 1.64E-05 | F = 7.29 |
| BMI | -0.24 | 0.08 | -2.81 | 1.59E-02 | $\rho = 0.006$ |
| WC | 0.50 | 0.10 | 4.79 | 4.41E-04 | $R^2 = 0.91$ |
| Tone2 | -1.64E04 | 3,750.70 | -4.39 | 8.81E-04 | $R^2 = 0.78$ (Adjusted) |
| Entropy3 | 276.50 | 47.52 | 5.82 | 8.23E-05 | |
| Tone3 | 0.78E04 | 3,117.10 | 2.51 | 2.75E-02 | |
| Entropy4 | 142.91 | 37.92 | 3.77 | 2.68E-03 | |
| Tone4 | 0.41E04 | 1,992.20 | 2.07 | 6.12E-02 | |
| Tone5 | -1.44E04 | 2,422.10 | -5.98 | 6.38E-05 | |
| Entropy6 | -108.43 | 47.07 | -2.30 | 3.99E-02 | |
| Tone6 | 2.83E04 | 3,974.10 | 7.12 | 1.21E-05 | |
| Entropy7 | -342.43 | 67.69 | -5.06 | 2.80E-04 | |
| Tone7 | -0.53E04 | 2,948.60 | -1.83 | 9.28E-02 | |
| Tone9 | -1.89E04 | 2,792.60 | -6.79 | 1.93E-05 | |
| Entropy10 | 241.70 | 44.21 | 5.47 | 1.44E-04 | |
| Tone10 | 7,416.3 | 1,260.2 | 5.8849 | 7.42E-05 | |

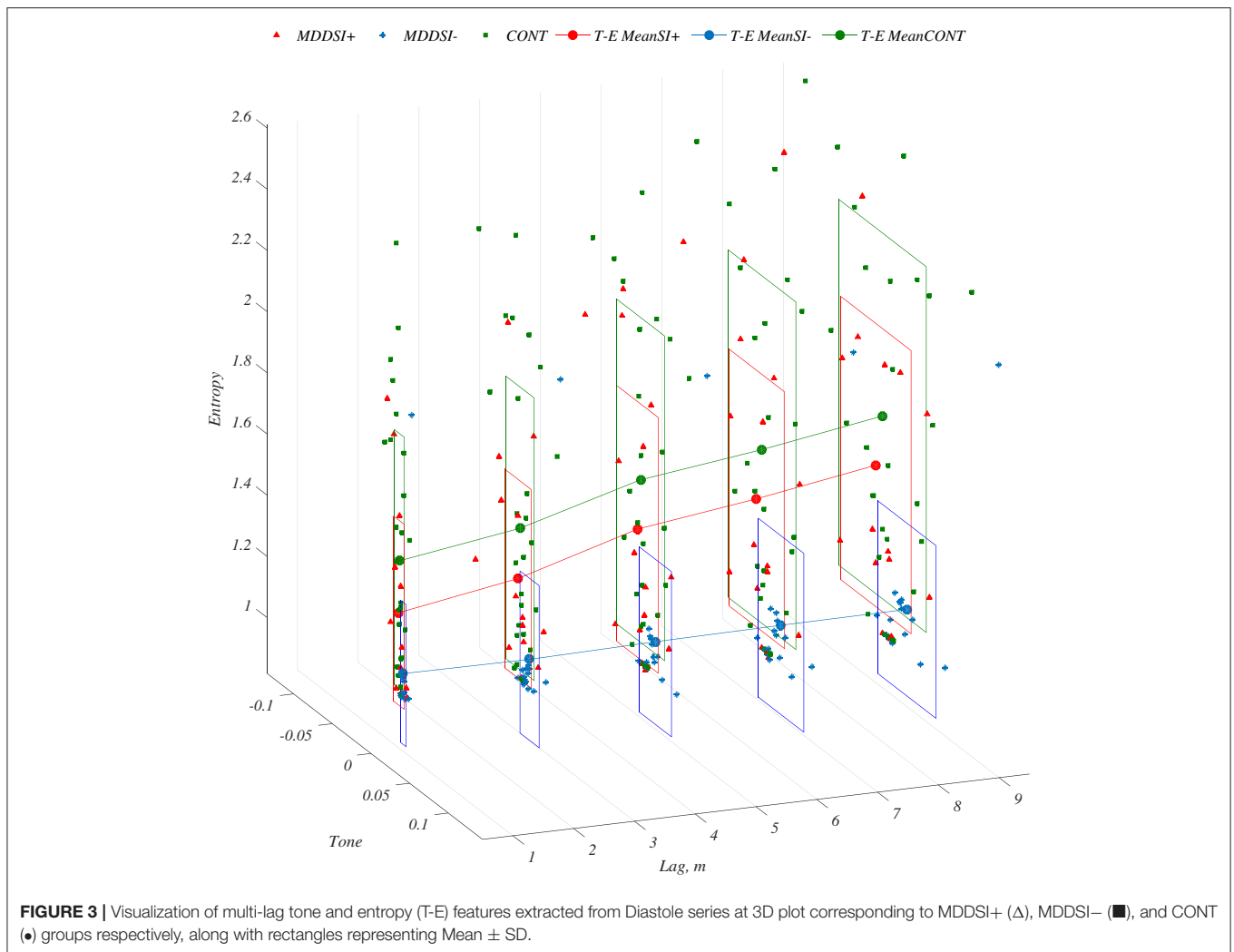
Estimated SC = Intercept + E1 × BMI + E2 × WC + E3 × Tn2 + E4 × Ent3 + E5 × Tn3 + E5 × Ent4 + E6 × Tn4 + E7 × Tn5 + E8 × Ent6 + E9 × Tn6 + E10 × Ent7 + E11 × Tn7 + E12 × Tn9 + E13 × Ent10 + E14 × Tn10.

likely to reflect sympathetic function. The association of higher lags for Tone and Entropy features might therefore be due to the activation and deactivation of the sympathetic nervous system in MDD suicidal ideation subjects.

The Systole point in the PPG signal indicates the end systolic volume at peak ventricular ejection, which was measured from the maximum arterial pressure, which occurs during contraction of the left ventricle. The peripheral resistance in the blood vessel influences the systolic value. The tone of systole measured in the current experiments represents the balance (or control) between increasing and decreasing peripheral resistance (related to sympathetic activation and deactivation); whereas entropy of systole represents the overall changes in peripheral resistance. The diastole point refers to the end diastolic volume, indicated by the minimum arterial pressure during relaxation and dilatation of the ventricles of the heart, when the ventricles fill with blood. During diastole the arterial walls are still stretched by the remaining blood, and blood continues to be driven into arterioles. Specifically reduction of arterial compliance (increased arterial stiffness) leads to a higher systolic (SBP) and a lower diastolic blood pressure (DBP) (Hilden, 1991). A highly compliant aorta (i.e., less stiff, normal aorta) has a smaller pulse pressure for a given stroke volume into the aorta than a stiff, low compliant aorta. For a given stroke volume, compliance determines pulse pressure. PWA of PPG signal measures the difference of vascular blood volume from the systolic to diastolic peaks (Miyasaka et al., 1978). Increasing arterial stiffness also leads to increased systolic blood pressure and a widening pulse pressure reflected as a higher PWA (Steppan et al., 2011) and results in an increase in Pulse Wave Velocity (Laurent and Boutouyrie, 2007). The amplification of pulse pressure can be

quantified by measuring the PWA (surrogate of pulse pressure). Tone and entropy of PWA (given PWA is proportional to pulse pressure) represents balance (control) and overall activity of increasing and decreasing pulse pressure. The current results can be interpreted as supporting previous studies linking absolute values of PPG parameters with arterial stiffness as increased PWA values in the MDDSI+ group may have been caused by arterial stiffness, which in turn reflects greater variability in sympathetic activation. However, there are no studies on Tone-Entropy values associated with PPG parameters and arterial stiffness. These results support earlier findings (Broadley et al., 2002; Sherwood et al., 2005) that compliance in blood vessels and associated blood flow characteristics play a part in the extended symptomatology of MDD. We speculate that Tone and Entropy values of pulse wave parameters may be associated with vascular neuro-endocrine control mechanisms (balance between activation and deactivation of sympathetic nervous system, renin-angiotensin system, vasopressin and atrial natriuretic peptide). Our entropy values however may also be associated with sympathetic activation as increased PWA values are associated with sympathetic activation, which is supported by previous studies (Broadley et al., 2002; Sherwood et al., 2005). In addition loss of blood vessel compliance and the associated arterial stiffness have also been shown to be part of the extended symptomatology of MDD (Mannie et al., 2013). These previous findings suggest that there is a close relationship between PPG measures and hence our Tone-Entropy results, which show significant differences between groups may be a novel interpretation of pulse wave variability and sensitive to MDD and suicidality.

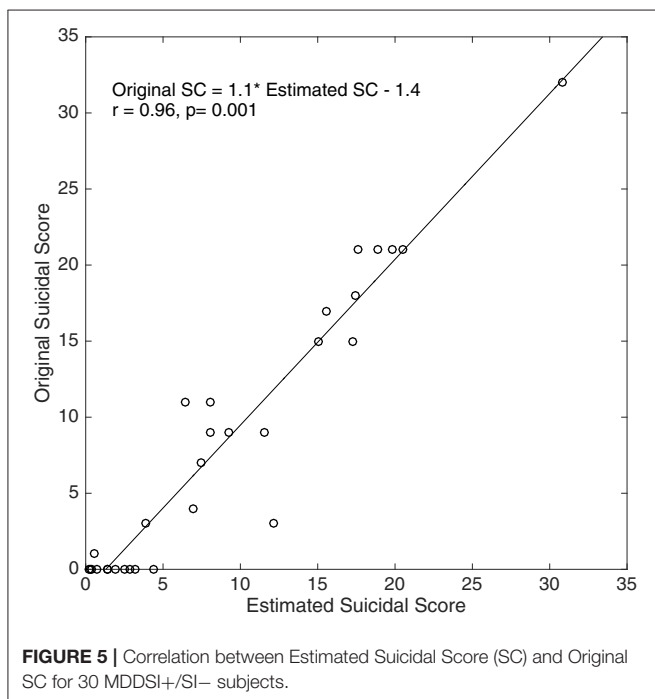
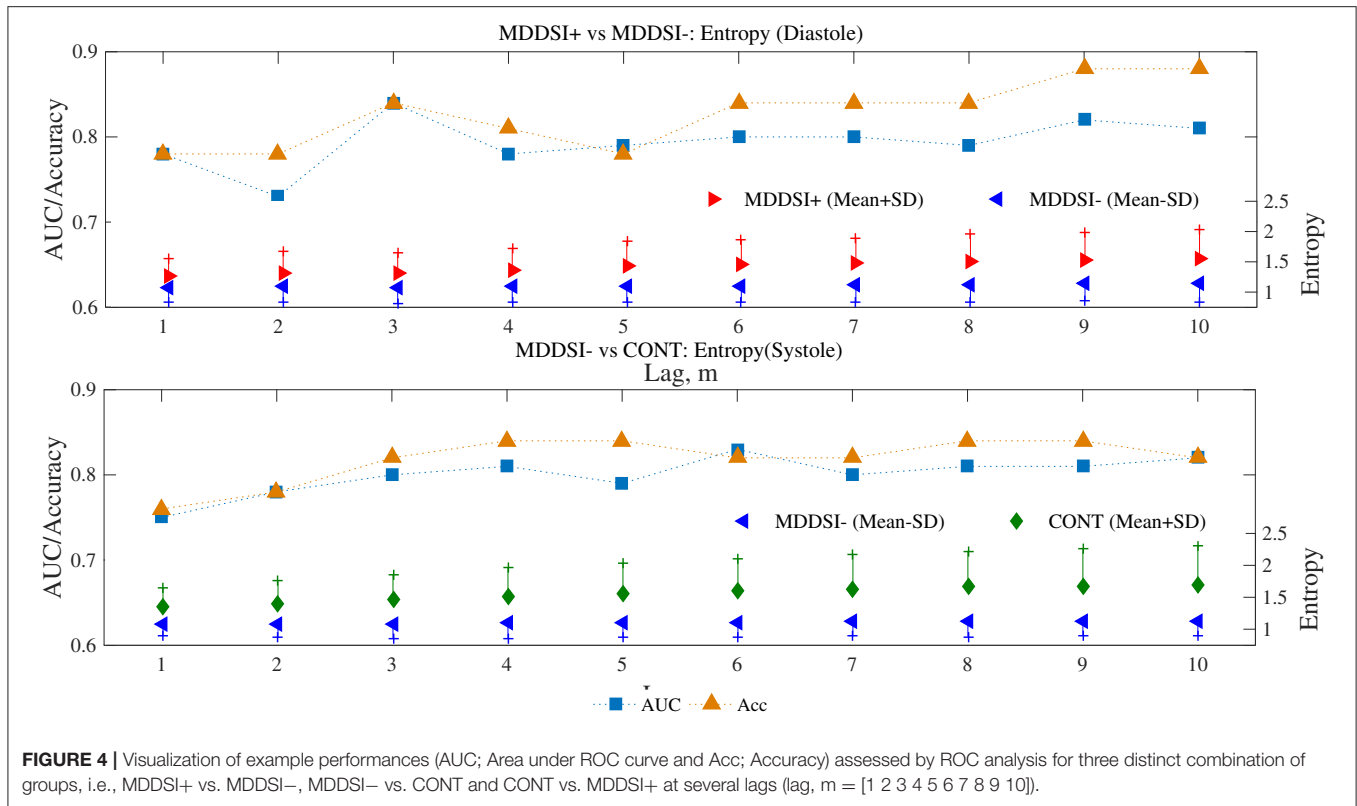
Physiological factors such as endothelial dysfunction have been shown to lead to the development and progression of coronary heart disease (CHD) and changes in cognitive function associated with suicidal ideation in MDD patients (Bush et al., 2001; Wulsin and Singal, 2003). The relationship between sympathetic activity of autonomic nervous system (ANS) and the main factors affecting arterial distensibility or stiffness is complex. The sympathetic nervous system is considered one of the major elements involved in the regulation of mean arterial pressure, affecting heart rate, left ventricular contractility, and systemic vascular resistance (Charkoudian and Rabbitts, 2009). How the magnitude of PWA is related to endothelial dysfunction is still unknown and remains to be investigated. It is however possible that the higher PWA could be related to changes in smooth muscle cell function or other mechanical properties of the resistance of vessels. Future research endeavors should evaluate the mechanism through which depressive symptoms with suicidal ideation influence the vascular endothelial function by investigating the biochemical markers of blood vessels and linking them with PPG based pulse wave variability features. How tone and entropy of the PPG features are directly associated with neurobiology and biochemistry of suicidal ideation in MDD patients requires further research. However, understanding the pathophysiological mechanism underlying the association of these features with depression and suicidal ideation could provide deeper insight into biological links with PPG features. Previous research



have shown that vascular disease and related brain pathologies (e.g., stroke, silent brain infarction, and subclinical brain injury) are associated with cognitive decline, dementia and depression (Seldenrijk et al., 2011). Arterial stiffness is one of the earliest manifestations of adverse structural and functional changes within the arterial wall, due to inflammation, oxidative stress, atherosclerosis, and aging (Anderson, 2006). Ventricles ejecting into a stiffer arterial system must generate higher end-systolic pressures for the same net stroke volume. Increased arterial stiffness was reported to be associated with increased catecholamine level during noradrenalin infusion in a small group of patients (Wittrock et al., 2009), which caused sympathetic activation. On the other hand, decreased arterial stiffness was correlated with acute and chronic mental stress (Gorelick et al., 2011), depression and anxiety (Seldenrijk et al., 2011). Oulis and co-researchers documented reversal of arterial stiffness in a small group of severely depressed women, after a 6-week antidepressant therapy (Selective serotonin re-uptake inhibitors, Serotonin-norepinephrine reuptake inhibitors or a combination thereof in adequate dosages; Oulis et al., 2010),

suggesting a pathophysiological connection. Postmortem tissue analysis of depressed suicide victims showed alterations in the density and affinity of β and α_2 -adrenergic receptors, which play an important role in vasodynamics and are associated with the sympathetic branch of the ANS. However, the biochemical abnormalities underlying the predisposition to and the pathogenesis of suicidal ideation in MDD and their arterial vasodynamics remain to be clearly established.

Results of the multiple logistic regression models in our study have clearly indicated a significant association between WC and age among the MDD patients with suicidal ideation; in comparison with MDD patients without suicidal ideation and the control group respectively. BMI and abdominal obesity (measured by WC) have recently been associated with arterial stiffness in different populations in Europe and the US (Budimir et al., 2012; Urbina et al., 2012) and suicidal ideation among US Adult Women (Zhao et al., 2011). Arterial walls stiffen with age and endothelial dysfunction is characteristic of arterial aging (Lee and Oh, 2010). As shown in **Table 8B**, improvements in classification performance by adding multi-lag T-E features with



suggest that a long-term increased production of stress hormones from hypothalamic-pituitary-adrenal (HPA) axis is involved in depression with suicidal risk, which contributes to body fat accumulation (Bjorntorp, 2001; Zhao et al., 2011).

In conclusion the warning signs of suicidal risk are largely subjective and could be missed by individuals and in some cases by experts leading to catastrophic outcomes. Suicide is not always a consequence of major depression as reported by Pompili (2010) that suicide might be better understood as a phenomenon centered in the individual, particularly variables predicting suicidal behavior should consider individual personality in addition to other existing measures (Pompili, 2010). Therefore, our findings are significant as we show that PPG associated features are related with suicidal ideation among our patient cohort and provides a basis for effective treatment by simply monitoring tone-entropy values of the PPG features. Determining tone and entropy from PPG is a simple and non-invasive test that can be easily incorporated into clinical settings. However, more research on multivariate analyses of T-E features of PPG signals and a larger sample size is required to validate the clinical utility of TE analysis in future research.

ETHICS STATEMENT

This study was carried out in accordance with the recommendations of Al Ain District Ethics Committee with written informed consent from all subjects. All subjects gave

TABLE 9 | Correlation coefficients (*r*) of time domain and multi-lag T-E features with suicidal scores.

| Lag, m | Feature | Systole | | Diastole | | PWA | | PTT | | PWV | |
|--------|---------|-------------|-----------------|-------------|-----------------|----------|-----------------|----------|-----------------|----------|-----------------|
| | | <i>r</i> | <i>p</i> -value | <i>r</i> | <i>p</i> -value | <i>r</i> | <i>p</i> -value | <i>r</i> | <i>p</i> -value | <i>r</i> | <i>p</i> -value |
| 1 | Entropy | 0.29 | 0.13 | 0.4 | 0.03 | 0.07 | 0.71 | 0.12 | 0.54 | 0.12 | 0.53 |
| | Tone | -0.07 | 0.7 | -0.05 | 0.79 | -0.06 | 0.75 | -0.04 | 0.83 | -0.03 | 0.88 |
| 2 | Entropy | 0.43 | 0.02 | 0.46 | 0.01 | 0.1 | 0.63 | 0.15 | 0.43 | 0.16 | 0.43 |
| | Tone | -0.02 | 0.93 | -0.02 | 0.9 | -0.06 | 0.74 | -0.09 | 0.64 | -0.05 | 0.8 |
| 3 | Entropy | 0.42 | 0.03 | 0.49 | 0.01 | 0.09 | 0.66 | 0.15 | 0.45 | 0.15 | 0.44 |
| | Tone | 0 | 1 | -0.02 | 0.92 | 0.01 | 0.94 | -0.08 | 0.7 | -0.05 | 0.79 |
| 4 | Entropy | 0.35 | 0.07 | 0.37 | 0.05 | 0.03 | 0.87 | 0.09 | 0.65 | 0.09 | 0.64 |
| | Tone | 0.02 | 0.91 | -0.01 | 0.94 | 0 | 0.99 | -0.05 | 0.79 | 0.02 | 0.92 |
| 5 | Entropy | 0.4 | 0.03 | 0.42 | 0.03 | 0 | 0.99 | 0.11 | 0.58 | 0.11 | 0.59 |
| | Tone | 0.02 | 0.92 | 0 | 0.99 | 0.02 | 0.92 | -0.08 | 0.68 | 0.01 | 0.97 |
| 6 | Entropy | 0.39 | 0.04 | 0.47 | 0.01 | 0.01 | 0.97 | 0.11 | 0.57 | 0.11 | 0.57 |
| | Tone | 0.01 | 0.95 | 0.01 | 0.96 | 0.03 | 0.89 | -0.05 | 0.8 | 0.04 | 0.84 |
| 7 | Entropy | 0.4 | 0.03 | 0.43 | 0.02 | -0.01 | 0.94 | 0.09 | 0.66 | 0.08 | 0.67 |
| | Tone | 0.01 | 0.97 | 0.01 | 0.96 | 0.05 | 0.82 | -0.01 | 0.95 | 0.06 | 0.75 |
| 8 | Entropy | 0.39 | 0.04 | 0.4 | 0.03 | -0.02 | 0.93 | 0.09 | 0.67 | 0.08 | 0.67 |
| | Tone | 0.01 | 0.96 | 0.01 | 0.94 | 0.08 | 0.69 | -0.02 | 0.92 | 0.05 | 0.78 |
| 9 | Entropy | 0.39 | 0.04 | 0.45 | 0.02 | -0.01 | 0.97 | 0.11 | 0.58 | 0.11 | 0.56 |
| | Tone | 0.01 | 0.96 | 0.01 | 0.95 | 0.06 | 0.75 | -0.05 | 0.8 | 0.06 | 0.75 |
| 10 | Entropy | 0.39 | 0.04 | 0.45 | 0.02 | -0.02 | 0.92 | 0.12 | 0.55 | 0.12 | 0.56 |
| | Tone | 0.01 | 0.94 | 0.02 | 0.93 | 0.08 | 0.67 | -0.08 | 0.67 | 0.08 | 0.7 |
| | Mean | 0.19 | 0.34 | -0.28 | 0.14 | 0.23 | 0.23 | -0.03 | 0.88 | -0.23 | 0.24 |
| | SD | 0.21 | 0.29 | 0.29 | 0.14 | 0.24 | 0.22 | 0.08 | 0.70 | -0.01 | 0.95 |
| | RMSSD | 0.41 | 0.03 | 0.44 | 0.02 | 0.48 | 0.01 | 0.07 | 0.74 | 0.08 | 0.69 |

Bold-underlined values indicate the significant ($p < 0.05$) ones. PWA, Pulse Wave Amplitude; PTT, Pulse Transit Time; PWV, Pulse Wave Velocity.

written informed consent in accordance with the Declaration of Helsinki. The protocol (14/28) was approved by the Al Ain District Ethics Committee and United Arab Emirates University Ethics Committee.

AUTHOR CONTRIBUTIONS

AK conceived, derived and implemented the tone entropy analysis, generated experimental results data and drafted the Manuscript. SS generated MATLAB codes and the plots for multi-lag tone entropy analysis. VL and YA carried out the experiments at American Center for Psychiatry and Neurology in Abu Dhabi. KA, RM, NC, and HJ contributed to the manuscript,

REFERENCES

- Anderson, T. J. (2006). Arterial stiffness or endothelial dysfunction as a surrogate marker of vascular risk. *Can. J. Cardiol.* 22, 72B–80B. doi: 10.1016/S0828-282X(06)70990-4
- Asmar, R., O'Rourke, M., and Safar, M. (1999). *Arterial Stiffness and Pulse Wave Velocity Clinical Applications*. Éditions Scientifiques et Médicales Elsevier.
- Barton, D. A., Dawood, T., Lambert, E. A., Esler, M. D., Haikerwal, D., Brenchley, C., et al. (2007). Sympathetic activity in major depressive disorder: identifying those at increased cardiac risk? *J. Hypertens.* 25, 2117–2124. doi: 10.1097/HJH.0b013e32829baae7
- Beck, A. T., Steer, R. A., and Ranieri, W. F. (1988). Scale for suicide ideation: psychometric properties of a self-report version. *J. Clin. Psychol.* 44, 499–505

participated in the discussion and interpretation of the results. All authors read and approved the final manuscript.

FUNDING

This work was partially supported by a Khalifa University Internal Fund (KUIRF) awarded to AK.

ACKNOWLEDGMENTS

The authors like to thank Ms. Ola Ali and the psychiatric nurses of American Center for Psychiatry and Neurology for recruiting patients and experimental data collection.

- Bjorntorp, P. (2001) Do stress reactions cause abdominal obesity and comorbidities? *Obes. Rev.* 2, 73–86. doi: 10.1046/j.1467-789x.2001.00027.x
- Bortolotto, L. A., Blacher, J., Kondo, T., Takazawa, K., and Safar, M. E. (2000). Assessment of vascular aging and atherosclerosis in hypertensive subjects: second derivative of photoplethysmogram versus pulse wave velocity. *Am. J. Hypertens.* 13, 165–171. doi: 10.1016/S0895-7061(99)00192-2
- Broadley, A. J. M., Korszun, A., Jones, C. J. H., and Frenneaux, M. P. (2002). Arterial endothelial function is impaired in treated depression. *Heart* 88, 521–523. doi: 10.1136/heart.88.5.521
- Budimir, D., Jeroncic, A., Gunjaca, G., Rudan, I., Polasek, O., Boban, M. et al. (2012). Sex-specific association of anthropometric measures of body composition with arterial stiffness in a healthy population. *Med. Sci. Monit.* 18, CR65–CR71. doi: 10.12659/MSM.882457

- Bush, D. E., Ziegelstein, R. C., Tayback, M., Richter, D., Stevens, S., Zahalsky, H., et al. (2001). Even minimal symptoms of depression increase mortality risk after acute myocardial infarction. *Am. J. Cardiol.* 88, 337–341. doi: 10.1016/S0002-9149(01)01675-7
- Chang, H. A., Chang, C. C., Chen, C. L., Kuo, T. B., Lu, R. B., and Huang, S. Y. (2012). Major depression is associated with cardiac autonomic dysregulation. *Acta Neuropsychiatr.* 24, 318–327. doi: 10.1111/j.1601-5215.2011.00647.x
- Charkoudian, N., and Rabbitts, J. A. (2009). Sympathetic neural mechanisms in human cardiovascular health and disease. *Mayo Clin. Proc.* 84, 822–830. doi: 10.4065/84.9.822
- Chowdhury, N. (2016). Integration between mental health-care providers and traditional spiritual healers: contextualising islam in the twenty-first century. *J. Relig. Health* 55, 1665–1671. doi: 10.1007/s10943-016-0234-7
- Chowienzyk, P. J., Kelly, R. P., MacCallum, H., Millasseau, S. C., Andersson, T. L., Gosling, R. G. et al. (1999). Photoplethysmographic assessment of pulse wave reflection: blunted response to endothelium-dependent beta2-adrenergic vasodilation in type II diabetes mellitus. *J. Am. Coll. Cardiol.* 34, 2007–2014. doi: 10.1016/S0735-1097(99)00441-6
- Claudia, L., Oscar, I., Héctor, P. G., and Marco, V. J. (2003). Poincaré plot indexes of heart rate variability capture dynamic adaptations after haemodialysis in chronic renal failure patients. *Clin. Physiol. Funct. Imaging.* 23, 72–80. doi: 10.1046/j.1475-097X.2003.00466.x
- Davies, J. I., and Struthers, A. D. (2003). Pulse wave analysis and pulse wave velocity: a critical review of their strengths and weaknesses. *J. Hypertens.* 21, 463–472. doi: 10.1097/00004872-200303000-00004
- Fawcett, T. (2004). ROC graphs: Notes and practical considerations for researchers. *Mach. Learn.* 31, 1–38.
- Gorelick, P. B., Scuteri, A., Black, S. E., DeCarli, C., Greenberg, S. M., Iadecola, C., et al. (2011). Vascular contributions to cognitive impairment and dementia a statement for healthcare professionals from the American heart association/American stroke association. *Stroke* 42, 2672–2713. doi: 10.1161/STR.0b013e3182299496
- Hanley, J. A., and McNeil, B. J. (1983). A method of comparing the areas under receiver operating characteristic curves derived from the same cases. *Radiology* 148, 839–843. doi: 10.1148/radiology.148.3.6878708
- Henry-Feugas, M. C. (2009). Intracranial MR dynamics in clinically diagnosed Alzheimer's disease: the emerging concept of "pulse wave encephalopathy". *Curr. Alzheimer Res.* 6, 488–502. doi: 10.2174/156720509790147124
- Hilden, T. (1991). The influence of arterial compliance on diastolic blood pressure and its relation to cardiovascular events. *J. Hum. Hypertens.* 5, 131–135.
- Karmakar, C. K., Khandoker, A. H., Jelinek, H. F., and Palaniswami, M. (2013). Risk stratification of cardiac autonomic neuropathy based on multi-lag Tone-Entropy. *Med. Biol. Eng. Comput.* 51, 537–546. doi: 10.1007/s11517-012-1022-5
- Khandoker, A. H., Jelinek, H. F., Moritani, T., and Palaniswami, M. (2010). Association of cardiac autonomic neuropathy with alteration of sympatho-vagal balance through heart rate variability analysis. *Med. Eng. Phys.* 32, 161–167. doi: 10.1016/j.medengphys.2009.11.005
- Laurent, S., and Boutouyrie, P. (2007). Arterial stiffness: a new surrogate end point for cardiovascular disease? *J. Nephrol.* 20(Suppl. 12), S45–S50.
- Lee, H. Y., and Oh, B. H. (2010) Aging and arterial stiffness. *Circ. J.* 74, 2257–2262. doi: 10.1253/circj.CJ-10-0910
- Leenaars, A. A. (1996). Suicide: a multidimensional malaise. *Suicide Life Threat. Behav.* 26, 221–236.
- Licht, C. M., Penninx, B. W., and De Geus, E. J. (2012). Effects of antidepressants, but not psychopathology, on cardiac sympathetic control: a longitudinal study. *Neuropsychopharmacology* 37, 2487–2495. doi: 10.1038/npp.2012.107
- Mackenzie, I. S., Wilkinson, I. B., and Cockcroft, J. R. (2002). Assessment of arterial stiffness in clinical practice. *Q. J. Med.* 95, 67–74. doi: 10.1093/qjmed/95.2.67
- Mannie, Z. N., Williams, C., Diesch, J., Steptoe, A., Leeson, P., and Cowen, P. J. (2013). Cardiovascular and metabolic risk profile in young people at familial risk of depression. *Br. J. Psychiatry.* 203, 18–23. doi: 10.1192/bjp.bp.113.126987
- Maxwell, S. E., O'Callaghan, M. F., and Delaney, H. D. (1993). "Analysis of covariance," in *Applied Analysis of Variance in Behavioral Science*, ed L. K. Edwards (New York, NY: Marcel Dekker, Inc.), 63–104.
- Miyasaka, M., Higashimoto, T., Ohtaka, T., and Mori, K. (1978). On the baseline deflection of plethysmogram in depression and neurosis. *Psychiatry Clin. Neurosci.* 32, 495–508. doi: 10.1111/j.1440-1819.1978.tb00157.x
- Oida, E., Moritani, T., and Yamori, Y. (1997). Tone-entropy analysis on cardiac recovery after dynamic exercise. *J. Appl. Physiol.* 82, 1794–1801.
- Oulis, P., Kouzoupis, A., Kyrkou, K., Masdrakis, V. G., Georgiopoulos, G., Karapoulos, E., et al. (2010). Reversal of increased arterial stiffness in severely depressed women after 6-week antidepressant treatment. *J. Affect. Disord.* 122, 164–166. doi: 10.1016/j.jad.2009.08.003
- Pompili, M. (2010). Exploring the phenomenology of suicide. *Suicide Life Threat. Behav.* 40, 234–244. doi: 10.1521/suli.2010.40.3.234
- Quade, D. (1967). Rank analysis of covariance. *J. Am. Stat. Assoc.* 62, 1187–1200. doi: 10.1080/01621459.1967.10500925
- Sato, T., Nishinaga, M., Kawamoto, A., Ozawa, T., and Takatsuji, H. (1993). Accuracy of a continuous blood pressure monitor based on arterial tonometry. *Hypertension* 21, 866–874. doi: 10.1161/01.HYP.21.6.866
- Seldenrijk, A., van Hout, H. P., van Marwijk, H. W., de Groot, E., Gort, J., Rustemeijer, C., et al. (2011). Depression, anxiety, and arterial stiffness. *Biol. Psychiatry* 69, 795–803. doi: 10.1016/j.biopsych.2010.12.034
- Sheehan, D. V., Lecrubier, Y., Sheehan, K. H., Amorim, P., Janavs, J., Weiller, E., et al. (1998). The Mini-International Neuropsychiatric Interview (MINI): the development and validation of a structured diagnostic psychiatric interview for DSM-IV and ICD-10. *J. Clin. Psychiatry.* 59 (Suppl. 20), 22–33.
- Sherwood, A., Hinderliter, A. L., Watkins, L. L., Waugh, R. A., and Blumenthal, J. A. (2005). Impaired endothelial function in coronary heart disease patients with depressive symptomatology. *J. Am. Coll. Cardiol.* 46, 656–659. doi: 10.1016/j.jacc.2005.05.041
- Soloff, P. H., Lynch, K. G., Kelly, T. M., Malone, K. M., and Mann, J. J. (2000). Characteristics of suicide attempts of patients with major depressive episode and borderline personality disorder: a comparative study. *Am. J. Psychiatry* 157, 601–608. doi: 10.1176/appi.ajp.157.4.601
- Steppan, J., Barodka, V., Berkowitz, D. E., and Nyhan, D. (2011). Vascular stiffness and increased pulse pressure in the aging cardiovascular system. *Cardiol. Res. Pract.* 2011:263585. doi: 10.4061/2011/263585
- Task force of the European Society of Cardiology (1996). Heart rate variability standards of measurement, physiological interpretation, and clinical use. *Eur. Heart J.* 17, 354–381. doi: 10.1093/oxfordjournals.eurheartj.a014868
- Urbina, E. M., Gao, Z., Khoury, P. R., Martin, L. J., and Dolan, L. M. (2012). Insulin resistance and arterial stiffness in healthy adolescents and young adults. *Diabetologia.* 55, 625–631. doi: 10.1007/s00125-011-2412-1
- Wells, C. L. (2008). *A Comparison of Suicidal Ideation between Active Duty Military and Military Dependents Outpatients: A Retrospective Study Identifying Treatment Outcome Using the Outcome Questionnaire-45.2*. Ann Arbor: MI: ProQuest.
- WHO (2016). Available online at: http://www.who.int/mental_health/prevention/suicide/suicideprevent/en/
- Williams, J. B. (1988). A structured interview guide for the hamilton depression rating scale. *Arch. Gen. Psychiatry* 45, 742–747. doi: 10.1001/archpsyc.1988.01800320058007
- Wittrock, M., Scholze, A., Compton, F., Schaefer, J. H., Zidek, W., and Tepel, M. (2009). Noninvasive pulse wave analysis for the determination of central artery stiffness. *Microvasc. Res.* 77, 109–112. doi: 10.1016/j.mvr.2008.10.001
- Wulsin, L. R., and Singal, B. M. (2003). Do depressive symptoms increase the risk for the onset of coronary disease? a systematic quantitative review. *Psychosom. Med.* 65, 201–210. doi: 10.1097/01.PSY.0000058371.50240.E3
- Zhao, G., Ford, E. S., Li, C., Tsai, J., Dhingra, S., and Balluz, L. S. (2011). Waist circumference, abdominal obesity, and depression among overweight and obese U.S. adults: National Health and Nutrition Examination Survey 2005–2006. *BMC. Psychiatry.* 11:130. doi: 10.1186/1471-244X-11-130

Conflict of Interest Statement: The authors declare that the research was conducted in the absence of any commercial or financial relationships that could be construed as a potential conflict of interest.

Copyright © 2017 Khandoker, Luthra, Abouallaban, Saha, Ahmed, Mostafa, Chowdhury and Jelinek. This is an open-access article distributed under the terms of the Creative Commons Attribution License (CC BY). The use, distribution or reproduction in other forums is permitted, provided the original author(s) or licensor are credited and that the original publication in this journal is cited, in accordance with accepted academic practice. No use, distribution or reproduction is permitted which does not comply with these terms.