



Leaf nitrogen from first principles: field evidence for adaptive variation with climate

Ning Dong^{1,3,4}, Iain Colin Prentice^{1,2}, Bradley J. Evans^{1,3,4}, Stefan Caddy-Retalic^{5,6}, Andrew J. Lowe^{5,6,7}, and Ian J. Wright¹

¹Department of Biological Sciences, Macquarie University, North Ryde, NSW 2109, Australia

²AXA Chair of Biosphere and Climate Impacts, Department of Life Sciences, Imperial College London, Silwood Park Campus, Buckhurst Road, Ascot SL5 7PY, UK

³Terrestrial Ecosystem Research Network: Ecosystem Modelling and Scaling Infrastructure, University of Sydney, NSW 2006, Australia

⁴Faculty of Agriculture and Environment, Department of Environmental Sciences, University of Sydney, NSW 2006, Australia

⁵Terrestrial Ecosystem Research Network: Australian Transect Network, University of Adelaide, North Terrace, Adelaide, SA 5005, Australia

⁶School of Biological Sciences and Environment Institute, University of Adelaide, North Terrace, Adelaide, SA 5005, Australia

⁷Science, Monitoring and Knowledge Branch, Department of Environment, Water and Natural Resources, Hackney Road, Kent Town, SA 5005, Australia

Correspondence to: Ning Dong (ning.dong@students.mq.edu.au)

Received: 14 March 2016 – Published in Biogeosciences Discuss.: 4 April 2016

Revised: 16 November 2016 – Accepted: 25 November 2016 – Published: 30 January 2017

Abstract. Nitrogen content per unit leaf area (N_{area}) is a key variable in plant functional ecology and biogeochemistry. N_{area} comprises a structural component, which scales with leaf mass per area (LMA), and a metabolic component, which scales with Rubisco capacity. The co-ordination hypothesis, as implemented in LPJ and related global vegetation models, predicts that Rubisco capacity should be directly proportional to irradiance but should decrease with increases in $c_i : c_a$ and temperature because the amount of Rubisco required to achieve a given assimilation rate declines with increases in both. We tested these predictions using LMA, leaf $\delta^{13}\text{C}$, and leaf N measurements on complete species assemblages sampled at sites on a north–south transect from tropical to temperate Australia. Partial effects of mean canopy irradiance, mean annual temperature, and $c_i : c_a$ (from $\delta^{13}\text{C}$) on N_{area} were all significant and their directions and magnitudes were in line with predictions. Over 80 % of the variance in community-mean (ln) N_{area} was accounted for by these predictors plus LMA. Moreover, N_{area} could be decomposed into two components, one proportional to LMA

(slightly steeper in N-fixers), and the other to Rubisco capacity as predicted by the co-ordination hypothesis. Trait gradient analysis revealed $c_i : c_a$ to be perfectly plastic, while species turnover contributed about half the variation in LMA and N_{area} .

Interest has surged in methods to predict continuous leaf-trait variation from environmental factors, in order to improve ecosystem models. Coupled carbon–nitrogen models require a method to predict N_{area} that is more realistic than the widespread assumptions that N_{area} is proportional to photosynthetic capacity, and/or that N_{area} (and photosynthetic capacity) are determined by N supply from the soil. Our results indicate that N_{area} has a useful degree of predictability, from a combination of LMA and $c_i : c_a$ – themselves in part environmentally determined – with Rubisco activity, as predicted from local growing conditions. This finding is consistent with a “plant-centred” approach to modelling, emphasizing the adaptive regulation of traits. Models that account for biodiversity will also need to partition community-level trait variation into components due to phenotypic plasticity

and/or genotypic differentiation within species vs. progressive species replacement, along environmental gradients. Our analysis suggests that variation in N_{area} is about evenly split between these two modes.

1 Introduction

Nitrogen (N) is an essential nutrient for primary production and plant growth, and nitrogen content per unit leaf area (N_{area}) is a key variable in plant functional ecology and biogeochemistry. A strong correlation between leaf N and photosynthetic capacity has been observed, and is to be expected because typically almost half of the N in leaves is invested in the photosynthetic apparatus (Field and Mooney, 1986; Evans and Seemann, 1989; Evans, 1989). This component of N_{area} is approximately proportional to the maximum rate of carboxylation (V_{cmax}) at standard temperature, also expressed per unit area (Wohlfahrt et al., 1999; Takashima et al., 2004; Kattge et al., 2009). Cell walls account for a further significant fraction of leaf N (Lamport and Northcote, 1960; Niinemets and Tenhunen, 1997; Onoda et al., 2004). Leaf mass per area (LMA) is positively correlated with cell-wall N (Onoda et al., 2004) and is used as an index of plant investment in cell-wall biomass (Reich et al., 1991; Wright and Cannon, 2001). Thus, N_{area} can usefully be considered as the sum of a “metabolic” component related to V_{cmax} and a “structural” component proportional to LMA. Leaves with high V_{cmax} usually have high LMA, and so these two quantities can be at least partially correlated, as seen clearly (for example) in parallel vertical gradients of V_{cmax} and LMA within canopies of one species (e.g. Niinemets and Tenhunen, 1997). Across different species and environments, however, there is scope for considerable independent variation in V_{cmax} and LMA, implying the need to consider them separately.

Dynamic global vegetation models (DGVMs) are being extended to include interactive carbon (C) and N cycles (Thornton et al., 2007; Xu-Ri and Prentice, 2008; Zaehle and Friend, 2010), but there remain many open questions about the implementation of C–N coupling (Prentice and Cowing, 2013), including the control of leaf N content, which is treated quite differently by different models. For example, one common modelling approach predicts photosynthetic capacity from N_{area} , and N_{area} in turn from soil inorganic N supply (e.g. Luo et al., 2004). This implies an assumption that the soil environment, and soil microbial activity in particular, are the primary controls of N_{area} and photosynthetic capacity at the leaf level. An alternative assumption is that photosynthetic capacity is optimized as a function of irradiance, leaf-internal CO_2 concentration (c_i), and temperature (Haxeltine and Prentice, 1996; Dewar, 1996) – implicit in the widely used LPJ DGVM (Sitch et al., 2003) and other models derived from it, including LPJ-GUESS (Smith et

al., 2001) and LPX (Prentice et al., 2011a; Stocker et al., 2013). This “plant-centred” approach embodies the idea that plant allocation processes (and thus, not soil microbial processes) determine leaf-level traits. Limited N supply, by this reasoning, should lead to the production of fewer leaves, rather than leaves with suboptimal capacity. More specifically, it is derived from a long-standing concept, the “co-ordination hypothesis”, which states that the Rubisco- and electron transport-limited rates of photosynthesis tend to be co-limiting under average daytime conditions (Chen et al., 1993; Haxeltine and Prentice, 1996; Maire et al., 2012). Co-limitation is optimal – even though mechanistically, it may be an inevitable outcome of leaf metabolism (Chen et al., 1993) – in the sense that it provides the right balance of investments in the biochemical machineries for carboxylation and electron transport. It implies that enzyme activities adjust, over relatively long periods (weeks or longer), so that co-limitation holds. An important consequence is that the predicted responses of photosynthetic traits and rates to environmental variables observed in the field (whether temporally, comparing different seasons, or spatially, comparing different environments) are substantially different from those seen in short-term laboratory experiments. Specifically, V_{cmax} (and thus the metabolic component of N_{area}) is predicted to be directly proportional to irradiance, to decrease with increasing $c_i : c_a$, and to decrease with increasing temperature. These predictions are supported in general terms by an observed positive relationship between N_{area} and irradiance (Field, 1983; Wright et al., 2005), a negative relationship between N_{area} and $c_i : c_a$ (Wright et al., 2003; Prentice et al., 2011b, 2014), and (in woody evergreens at least) a negative relationship between N_{area} and temperature (845 species: data from Wright et al., 2004). But there has been no systematic attempt to quantitatively assess the relationship of leaf N with environmental and structural predictors across environmental gradients. Such empirical work is needed to assess and underpin methods of C–N cycle coupling in DGVMs.

Here we set out to test the predictability of N_{area} using measurements carried out on dried plant material collected by the Terrestrial Ecosystem Research Network (TERN) AusPlots and Australian Transect Network facilities, at 27 sites on a north–south transect across the Australian continent. The transect extended from the wet–dry (monsoonal) tropics to the dry–wet (mediterranean) temperate zone via the arid interior, and encompassed substantial variation in all of the hypothesized controls of N_{area} (Fig. 1). The AusPlots protocol involves sampling all species within a 100×100 m plot (White et al., 2012). We measured N_{area} , $\delta^{13}\text{C}$, and LMA on all species at each site, and tested and quantified the effects of irradiance, $c_i : c_a$ ratio (from $\delta^{13}\text{C}$), temperature, LMA, and N-fixation ability (26 % of the species sampled were N-fixers) on variation in N_{area} . The sampling design also allowed us to implement the trait gradient analysis method introduced by Ackerly and Cornwell (2007), which has been surprisingly little used to date. A growing body of field mea-

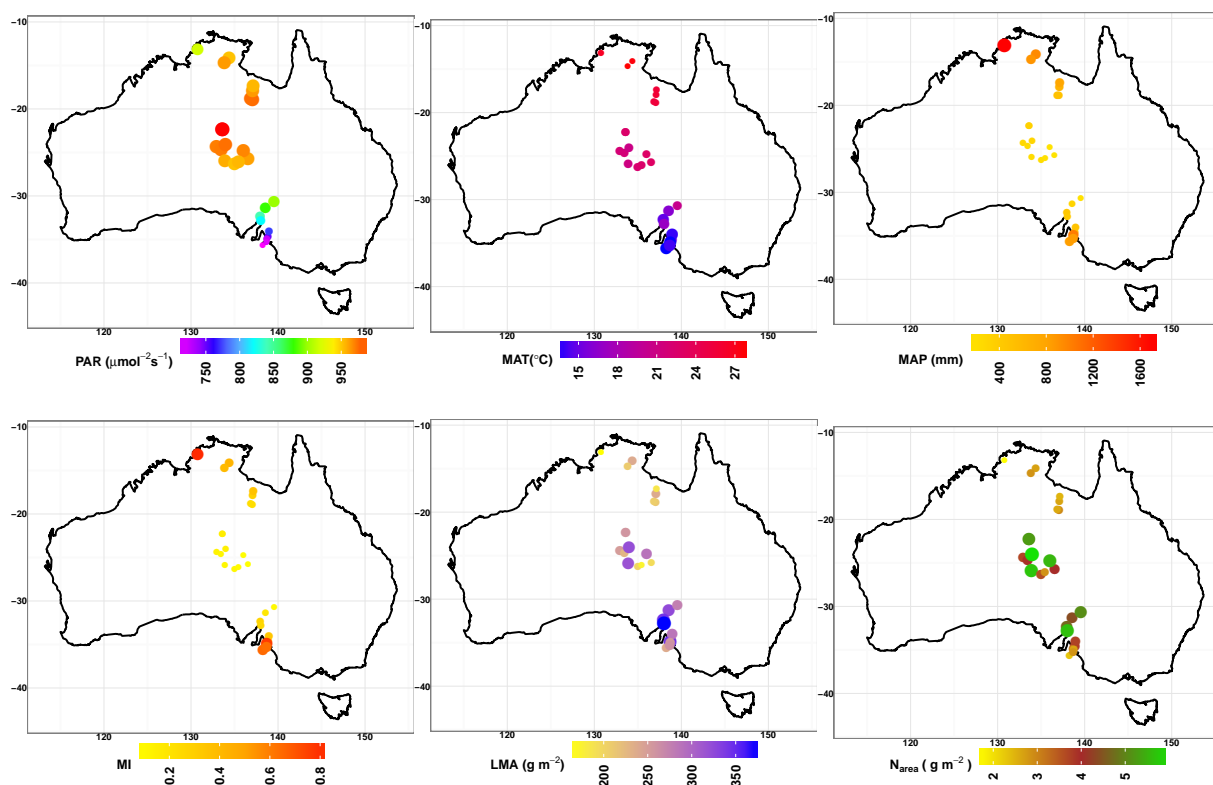


Figure 1. Site locations, climate, and leaf-trait distributions: mean annual precipitation (MAP, mm), mean annual temperature (MAT, °), mean incident daytime photosynthetically active radiation (PAR, $\mu\text{mol m}^{-2} \text{s}^{-1}$), moisture index (MI). Site mean N_{area} (g m^{-2}) and LMA (g m^{-2}) are also shown.

measurements shows extensive leaf-trait variation within species and plant functional types (PFTs) (Kattge et al., 2011; Meng et al., 2015). Trait gradient analysis allows trait variation to be partitioned into a component due to variation within species and a component due to species replacement.

2 Materials and methods

Our analyses are based on 442 leaf measurements representing all species found in a $100 \text{ m} \times 100 \text{ m}$ plot at each of 27 sites on a broad north–south transect across Australia (Fig. 1). We performed a regression analysis to test the relationships of N_{area} with mean annual temperature (MAT), irradiance, plant trait leaf mass per area (LMA), $c_i : c_a$ ratio, and N-fixation capacity. We also fitted a statistical model in which N_{area} was treated as the sum of a metabolic component proportional to predicted (optimal) photosynthetic capacity at standard temperature (based on temperature, irradiance, and $c_i : c_a$ ratio) and a structural component proportional to LMA. Finally, we carried out a trait gradient analysis in order to quantify the contributions of environment vs. species identity to variation in N_{area} , $c_i : c_a$ ratio, and LMA.

2.1 Climate data and analysis

Climatological data for the 27 sites were obtained from the eMAST/ANUclimate data set (www.emast.org.au), which extends from 1970 to 2012 with 1 km spatial resolution across the entire continent. Mean annual precipitation (MAP) over this period at the sampling sites ranged from 154 to 1726 mm and mean annual temperature (MAT) from 14.1 to 27.6°. The moisture index ($\text{MI} = P/E_q$, where P is mean annual precipitation and E_q is equilibrium evapotranspiration, calculated with the STASH program: Gallego-Sala et al., 2012) varied from 0.07 to 0.82. The mean incident flux of photosynthetically active radiation (PAR) during daylight hours, expressed as photosynthetic photon flux density ($\mu\text{mol m}^{-2} \text{s}^{-1}$), was also calculated using STASH. This incident flux (at the top of the canopy) was averaged through the canopy using Beer's law, as follows. First leaf area index (L) was estimated from a remotely sensed (MODIS NBAR-derived using MOD43A4: <http://remote-sensing.nci.org.au/u39/public/html/modis/fractionalcover-clw>) fractional cover of photosynthetic vegetation (f_v) at 1 km resolution at each site, from data assembled by the TERN AusCover facility (Guerschman et al., 2009):

$$L \approx -(1/k) \ln(1 - f_v), \quad (1)$$

where $k = 0.5$. Then absorbed PAR per unit leaf area (I_L) was calculated as

$$I_L \approx I_0(1 - e^{-kL})/L \approx I_0 k f_v / \ln[1/(1 - f_v)], \quad (2)$$

where I_0 is the incident PAR above the canopy. This calculation yields $I_L \approx I_0$ for sparse vegetation ($L < 1$), but I_L becomes progressively smaller than I_0 as foliage density increases, reflecting the fact that the irradiance experienced by the average species is much lower in, say, a closed woodland than in an open shrubland, even if the PAR incident at the top of canopy is the same. In dense vegetation I_L will underestimate the PAR exposure of canopy dominants and overestimate the PAR exposure of understorey species. However, the use of a canopy average in this way was a necessary approximation (because we did not have quantitative information about the canopy position of each species) and considered preferable to using I_0 , which will systematically overestimate PAR exposure for most species in a dense community.

2.2 Foliage sampling and analysis

Mature outer-canopy leaves of each species were sampled during the growing season using the AusPlots methodology (White et al., 2012). (Note that in denser vegetation many species sampled are in the understorey, so their “outer-canopy” leaves are still shaded by the overstorey. Many species thus receive considerably reduced sunlight compared to the overstorey, implying that the canopy-average irradiance I_L is more suitable than the top-of-canopy value I_0 as a community measure of irradiance.) In total, the 27 selected sites included 442 unique species, of which 37 were C_4 plants (not analysed further here). LMA was measured on the archived leaf samples by scanning and weighing the leaves. Subsamples (a mixture of material from at least two replicates) were analysed for C and N contents and bulk $\delta^{13}C$ at the Stable Isotope Core Laboratory of Washington State University, USA. N_{area} was calculated from N content and LMA. Carbon isotope discrimination (Δ) values were derived from the reported $\delta^{13}C$ values using the standard formula

$$\Delta = (\delta_{\text{air}} - \delta_{\text{plant}})/(1 + \delta_{\text{plant}}), \quad (3)$$

where δ_{air} is the carbon isotope composition of air and δ_{plant} is the carbon isotope composition of the plant material. Because of the different diffusion rates and biochemical rates of carboxylation between $^{13}CO_2$ and $^{12}CO_2$, Δ can be used to estimate the $c_i : c_a$ ratio as

$$c_i : c_a \approx (a + \Delta)/(b - a), \quad (4)$$

where the recommended standard values are $a = 4.4\%$ and $b = 27\%$ (e.g. Cernusak et al. 2013).

2.3 Analysis of V_{cmax}

Values of V_{cmax} were predicted based on the co-ordination hypothesis, by equating the carboxylation- and electron

transport-limited rates of photosynthesis and, as a simplifying assumption, treating the electron transport-limited rate as proportional to absorbed PAR (i.e. ignoring the saturation of the electron transport rate at high irradiances). These assumptions lead to the following estimate:

$$V_{\text{cmax}} \approx \varphi_0 I_L (c_i + K)/(c_i + 2\Gamma^*), \quad (5)$$

where φ_0 is the intrinsic quantum efficiency of photosynthesis (0.093; Long et al., 1993), c_i is the leaf-internal concentration of CO_2 , K is the effective Michaelis–Menten coefficient of Rubisco, and Γ^* is the photorespiratory compensation point. Values of both these quantities and their activation energies (governing their temperature responses) are based on the empirical in vivo determinations by Bernacchi et al. (2001) widely used in photosynthesis research. Both K and Γ^* were evaluated at standard atmospheric pressure and oxygen concentration, and site MAT. Predicted values of V_{cmax} were adjusted to 25° , because the amount of N allocated to Rubisco and other enzymes involved in carboxylation should be proportional to V_{cmax} at a standard temperature, not at the growth temperature.

2.4 Statistical methods

All statistics were performed in R3.1.3 (R Core Team, 2015). Linear regressions were fitted using the *lm* function, partial residual plots were generated using the *visreg* package, and the relative contributions of different predictors were quantified using the Lindeman et al. (1980) method as implemented in the *relaimpo* package. In a first, exploratory statistical analysis, a linear model was fitted for $\ln N_{\text{area}}$ with $c_i : c_a$, MAT, $\ln I_L$, $\ln LMA$, and the factor “N-fixer” as predictors. The regression slopes of $\ln N_{\text{area}}$ against $c_i : c_a$, MAT and $\ln I_L$ can all be independently predicted from the co-ordination hypothesis by differentiation of Eq. (5) (see Appendix A; note that these formulae explicitly predict the slopes for $\ln N_{\text{area}}$). These predicted values were compared with the fitted values and their 95 % confidence limits in order to assess support for the co-ordination hypothesis.

In a second analysis, community-mean values were calculated as simple averages across the species in each plot, omitting the factor “N-fixer”. A linear model was fitted to the community means of $\ln N_{\text{area}}$ as a function of $c_i : c_a$, MAT, $\ln I_L$, and $\ln LMA$ to assess the predictability of leaf N at the community level.

In a third analysis, N_{area} was modelled as a linear combination of the predictors Rubisco N, N_{rubisco} (derived from predicted V_{cmax} at 25°), and structural N, $N_{\text{structure}}$ (derived from LMA using the empirical relationship $N_{\text{structure}} = 10^{-2.67} LMA^{0.99}$, in $g\ m^{-2}$; Yusuke Onoda, personal communication 2015), including “N-fixer” as a factor and allowing interactions of the predictors with this factor.

2.5 Trait gradient analysis

Trait gradients were generated for \ln LMA, $\ln N_{\text{area}}$, and $c_i : c_a$ following the analysis method of Ackerly and Cornwell (2007), again using simple averages across species to estimate community means. In this analysis species trait values were plotted against site-mean trait values. By definition, the regression of the species trait values against site-mean trait values has a slope of unity. For a perfectly plastic trait, regression of trait variation within species against the site-mean trait values would also yield a slope of unity. The common within-species slope that this approach provides is a measure of the fraction of trait variation due to phenotypic plasticity and/or genotypic variability. Its one-complement measures the fraction due to species turnover. Natural log transformation was applied to LMA and N_{area} because of their large variance and skewed distributions, but not to $c_i : c_a$, because of its small variance and approximately normal distribution.

3 Results

3.1 Leaf N variations with climate and leaf traits

Significant partial relationships were found for $\ln N_{\text{area}}$ vs. $c_i : c_a$, MAT, and $\ln I_L$ (Table 1, Fig. 2). The relationship was negative for $c_i : c_a$, as expected, because lower $c_i : c_a$ implies that a greater photosynthetic capacity is required to achieve a given assimilation rate (or equivalently: a stronger CO₂ drawdown is enabled by a higher V_{cmax}). The relationship was also negative for MAT, as expected, because there is an inverse relationship between temperature and the quantity of leaf proteins required to support a given value of V_{cmax} . The relationship was positive for $\ln I_L$ (PAR), as expected, because the higher the irradiance, the greater the carboxylation capacity required for co-limitation with the rate of electron transport.

Theoretical slopes for these relationships (derived in Appendix A) are compared with the fitted slopes in Table 1. For $\ln N_{\text{area}}$ vs. $\ln I_L$, the theoretical slope is unity. The fitted slope of 0.874 (95% confidence limits: 0.685, 1.063) was statistically indistinguishable from unity. (A slope significantly greater than unity was found for $\ln N_{\text{area}}$ vs. $\ln I_0$, i.e. top-of-canopy PAR, as expected, as this measure underestimates the change in mean canopy PAR along the gradient from sparse, high-PAR to dense, lower-PAR communities.) For $\ln N_{\text{area}}$ vs. $c_i : c_a$, the fitted slope of -0.611 (-1.107 , -0.115) was fortuitously close to the theoretical slope of -0.615 , although the value was only weakly constrained for these data. For $\ln N_{\text{area}}$ vs. MAT, the theoretical slope was obtained by subtracting the “kinetic” slope of $\ln V_{\text{cmax}}$ vs. temperature (from the activation energy of carboxylation as given by Bernacchi et al., 2001) from the shallow positive slope implied by Eq. (5). The kinetic effect was dominant

and results in an overall predicted negative slope of -0.048 . The fitted slope of -0.047 (-0.060 , -0.034) was indistinguishable from this theoretical slope, indicating acclimation to temperature by diminished allocation of N to metabolic functions at higher temperature, offsetting the increased reaction rate predicted by the Arrhenius equation. However, this slope was shallower than would be predicted by the Arrhenius equation alone, reflecting the reduced quantum efficiency of assimilation (a higher V_{cmax} is required to support a given assimilation rate) at higher temperatures.

The proportion of leaf N allocated to Rubisco has generally been found to decline, while the total N allocated to cell walls increases with increasing LMA (Hikosaka and Shigeno, 2009). Figure 2 shows a strong positive partial relationship between $\ln N_{\text{area}}$ and LMA. N-fixers had generally higher N_{area} than non-N-fixers (Fig. 2e: $p < 0.001$). The predictors together explained 55% of the variation in leaf N across species and sites.

Fully 82% of the variation in the community-mean value of $\ln N_{\text{area}}$ could be explained by the combination of community-mean LMA and environmental variables. Significant partial relationships of community-mean $\ln N_{\text{area}}$ with MAT, $\ln I_L$, and \ln LMA (Table 2) were consistent with the results obtained at species level. The fitted slopes of $\ln N_{\text{area}}$ against $\ln I_L$ and MAT were again indistinguishable from the theoretical values, albeit with wide error bounds due to the much smaller sample size (27 as opposed to 405). The community-level partial relationship between $\ln N_{\text{area}}$ and $c_i : c_a$ showed a negative slope as predicted, although this relationship was barely significant ($p \approx 0.1$) due to the small sample size.

3.2 Leaf N as the sum of metabolic and structural components

Highly significant ($p < 0.001$) positive relationships were found between N_{area} and the predicted Rubisco-N content per unit leaf area (N_{rubisco}), and the predicted cell-wall N content per unit leaf area ($N_{\text{structure}}$) (Fig. 3). A priori we would expect the regression coefficient for $N_{\text{structure}}$ to be close to unity, and that for N_{rubisco} to be about 6 to 20 (if Rubisco constitutes about 5 to 15% of total leaf protein: Evans, 1989; Evans and Seemann, 1989; Onoda et al., 2004). The fitted slopes of 1.2 ($p < 0.001$; 95% confidence limits: 1.0, 1.4) and 9.5 ($p < 0.001$; 7.6, 11.5) in Table 3 respectively were consistent with these expectations.

There was no significant main effect of the factor “N-fixer” and no significant interaction between N_{rubisco} and the factor “N-fixer”. The co-ordination hypothesis predicts that the metabolic component of N_{area} should be environmentally optimized and therefore independent of N supply. This could not be tested without direct measurements of V_{cmax} or N_{rubisco} , which were precluded by the design of this study. However, N-fixers showed a steeper relationship between N_{area} and $N_{\text{structure}}$. This was manifested as a significant inter-

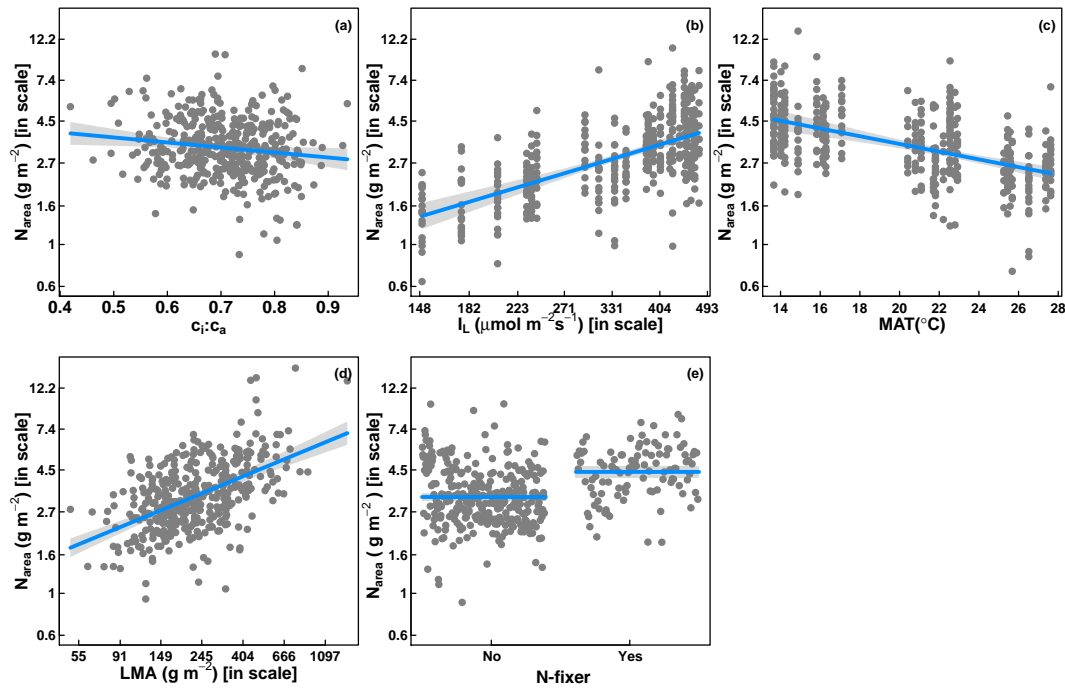


Figure 2. Partial residual plots for the regression of $\ln N_{\text{area}}$ (g m^{-2}) as a function of $c_i : c_a$ (from $\delta^{13}\text{C}$), \ln (mean canopy PAR, I_L) ($\mu\text{mol m}^{-2} \text{s}^{-1}$), MAT ($^{\circ}\text{C}$), \ln LMA (g m^{-2}), and the factor “N-fixer” at species level. Note the logarithmic scale of the y axis.

Table 1. Linear regression coefficients for $\ln N_{\text{area}}$ (g m^{-2}) as a function of $c_i : c_a$ (from $\delta^{13}\text{C}$), \ln (mean canopy PAR, I_L) ($\mu\text{mol m}^{-2} \text{s}^{-1}$), MAT ($^{\circ}\text{C}$), \ln LMA (g m^{-2}), and the factor “N-fixer” at species level.

	Estimated	Predicted	p	Relative importance	R^2
$c_i : c_a$	-0.611 ± 0.252	-0.615	<0.01	14 %	
$\ln I_L$	0.874 ± 0.096	1	<0.001	19 %	
MAT	-0.047 ± 0.007	-0.048	<0.001	9 %	55 %
\ln LMA	0.415 ± 0.036	n/a	<0.001	39 %	
“N-fixer”	0.306 ± 0.041	n/a	<0.001	19 %	

n/a: not applicable.

action between the factor “N-fixer” and $N_{\text{structure}}$ ($p < 0.01$). This model, in which N_{area} was decomposed into a metabolic component predicted by the co-ordination hypothesis and a structural component proportional to LMA, explained 52 % of the variance in N_{area} across species and sites. The relative importance of variations in the metabolic and structural components was determined to be 39 and 61 % respectively, showing inter alia the importance of variation in LMA in determining leaf N content.

3.3 Quantifying trait plasticity vs. species turnover

In total, 243 C_3 species were sampled at two or more sites. These species allowed calculation of a common slope, being an estimate of trait plasticity *sensu lato* (that is, phenotypic plasticity or genetic adaptation or both) across species

(Fig. 4), for the traits $c_i : c_a$, \ln LMA, and $\ln N_{\text{area}}$. Contrasting results were obtained for the three traits. It appeared that $c_i : c_a$ is perfectly plastic, with a common (within-species) slope indistinguishable from unity. The common slope of N_{area} was close to 0.5, indicating approximately equal contributions of plasticity and species turnover to the total variation. In the case of LMA, however, there was significant heterogeneity ($p < 0.05$) among the within-species slopes, with *Marsdenia viridiflora* showing a significantly steeper slope than the other species. After excluding this species, the common slope for LMA was also close to 0.5. A positive common slope indicates the ability of species to adapt their leaf morphology to environment. The positive common slope found for N_{area} is consistent with this trait’s nature as a combination of metabolic and structural components; its similar-

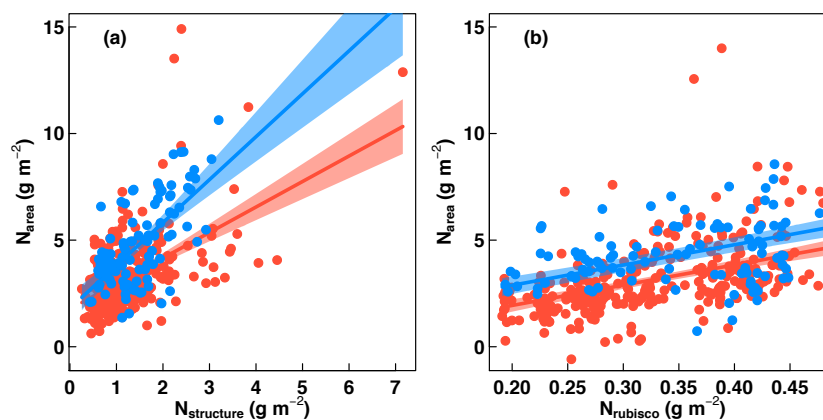


Figure 3. Partial residual plots for the linear regression of N_{area} as a function of independently predicted values of N_{rubisco} and $N_{\text{structure}}$ (all in g m^{-2}) at species level. Blue: N-fixers; red: non-N-fixers.

Table 2. Linear regression coefficients for community-mean (simple average) values of $\ln N_{\text{area}}$ (g m^{-2}) as a function of $c_i : c_a$ (from $\delta^{13}\text{C}$), \ln (mean canopy PAR, I_L) ($\mu\text{mol m}^{-2} \text{s}^{-1}$), MAT ($^{\circ}$), and \ln LMA (g m^{-2}).

	Estimated	Predicted	p	Relative importance	R^2
$c_i : c_a$	-1.60 ± 0.94	-0.615	n.s.	42 %	82 %
$\ln I_L$	0.70 ± 0.23	1	<0.001	20 %	
MAT	-0.035 ± 0.016	-0.048	<0.001	11 %	
\ln LMA	0.57 ± 0.19	n/a	<0.001	27 %	

n.s.: no significance. n/a: not applicable.

ity to the slope for LMA is consistent with the importance of variations in structural N in determining total N.

4 Discussion

4.1 Leaf N and environment

The variety of environments provided in this study by the long transcontinental transect, and the number of species sampled, allowed us to statistically separate the effects of $c_i : c_a$, irradiance, temperature, and LMA on N_{area} . The relationships with $c_i : c_a$, irradiance, and temperature were in the directions and magnitudes predicted by the co-ordination hypothesis. The relationship with site mean irradiance had a slope as predicted by the co-ordination hypothesis (i.e. close to 1), but a strong relationship, with a steeper slope as expected, was found when top-of-canopy irradiance was used instead of the canopy mean – indicating that both spatial variations and within-canopy shading were contributing to the relationship with site mean irradiance. We performed an additional regression using leaf nitrogen content per unit mass (N_{mass}) which showed, as expected, identical fitted coefficients for all predictors except LMA (Appendix B). However, because of the regression coefficient of $\ln N_{\text{area}}$ with respect to \ln LMA < 1 , the regression coefficient of $\ln N_{\text{mass}}$ with

respect to \ln LMA < 0 , i.e. N_{mass} , declines with increasing LMA – as has been widely reported. We also tried a regression of N_{mass} on the same set of predictors but without the inclusion of LMA; this yielded a much poorer fit and is not shown.

High N_{area} in plants from arid environments has been described often, and has traditionally been explained as a consequence of high N supply in environments with low rainfall (reducing leaching losses) and restricted plant cover (reducing total vegetation N demand) (e.g. Field and Mooney, 1986). This explanation would imply that plants in wetter environments have lower (and suboptimal) N_{area} due to low availability of N. However, the negative relationship commonly found between $c_i : c_a$ and N_{area} supports an alternative, adaptive (plant-centred) explanation. The least-cost hypothesis (Wright et al., 2003; Prentice et al., 2014) predicts lower $c_i : c_a$ in drier environments. This is because the drier the atmosphere, the greater the flux of water required to support a given rate of assimilation, which in turn shifts the balance of costs and benefits towards investment in photosynthetic capacity (V_{cmax}) and away from water transport capacity. When $c_i : c_a$ is lower, the co-ordination hypothesis predicts that a higher V_{cmax} (and therefore higher N_{area}) will be optimal, in order for the leaves to fully utilize the available light. The co-ordination hypothesis also predicts a further in-

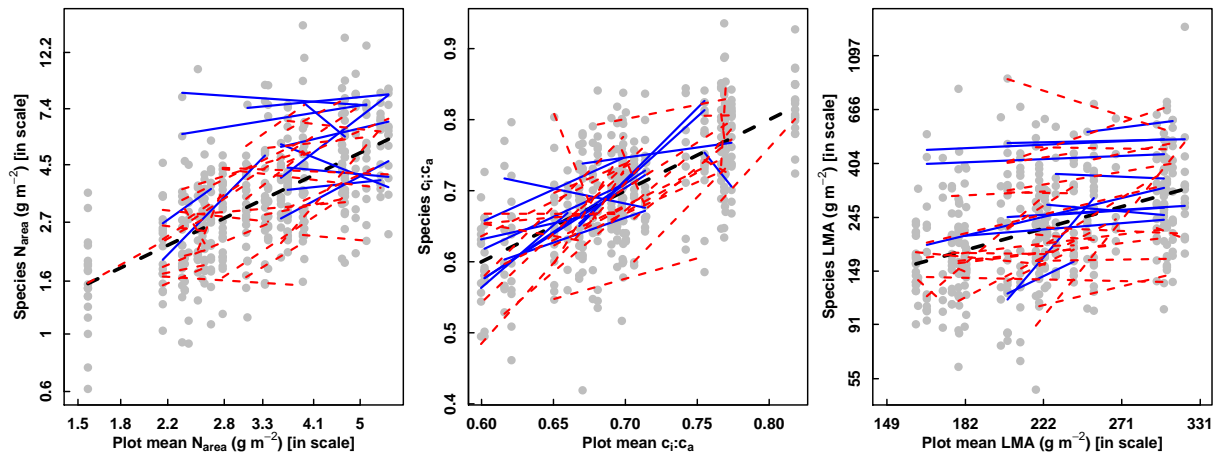


Figure 4. Trait means and regression lines for all 243 C_3 plant species in the 27 study sites. Note the logarithmic scales for N_{area} (g m^{-2}) and LMA (g m^{-2}). Thin red dashed lines represent individual within-species regression lines of non-N-fixer species. Thin blue lines represent individual within-species regression lines of N-fixer species. The black dashed line represents the overall regression line, which has a slope of unity by definition. Grey dots denote individual species–site combinations. Common within-species slopes are 0.53 ± 0.11 ($\ln N_{\text{area}}$), 1.02 ± 0.12 ($c_i : c_a$), and 0.55 ± 0.11 ($\ln \text{LMA}$).

Table 3. Linear regression coefficients for N_{area} as a function of independently predicted values of N_{rubisco} and $N_{\text{structure}}$ (all in g m^{-2}) at species level.

	Estimated	Predicted	p	Relative importance	R^2
N_{rubisco}	9.5 ± 2.0	6–20	<0.001	39 %	
$N_{\text{structure}}$	1.2 ± 0.2	1	<0.001	61 %	52 %
$N_{\text{structure}}$: “N-fixer”	1.0 ± 0.3	n/a	<0.01	n/a	

n/a: not applicable.

crease in N_{area} with increasing aridity due to reduced cloudiness and reduced shading by competitors, both factors tending to increase I_L (and both apparently contributing to the fitted relationship of N_{area} with I_L). Thus the co-ordination hypothesis could account for independent positive effects of site irradiance and aridity on N_{area} , as previously reported by Wright et al. (2005). The fitted relationship of N_{area} with temperature, PAR, and $c_i : c_a$ is consistent with our theoretical prediction, which implicitly includes all of these effects.

Despite the large within-site variation in LMA found at all points along the aridity gradient, there is a significant tendency for LMA to increase with aridity, perhaps because of the resistance to dehydration conferred by stiffer leaves (Ninemets, 2001; Wright and Westoby, 2002; Harrison et al., 2010) and/or the need for leaves to avoid overheating under transient conditions of high radiation load and low transpiration rates combined with low wind speed (Leigh et al., 2012). This increase in LMA is inevitably accompanied by an increasing structural N component.

Thus, several distinct aspects of plant allocation tend to increase N_{area} along gradients of increasing dryness. The predicted response of N_{rubisco} to temperature is a result of oppos-

ing effects: the declining efficiency of photosynthesis with increasing temperature (due to the temperature dependencies of K and Γ^*) is offset by the increased catalytic capacity of Rubisco at higher temperatures. The latter effect is predicted to be stronger, implying reduced N_{area} with increasing temperature, as observed.

4.2 The predictability of leaf N

Predicted N_{rubisco} and $N_{\text{structure}}$ together explained more than half of the variation in total N_{area} across species and sites. Our approach to predicting these two quantities invokes a simplified formula, Eq. (5), which is based on the co-ordination hypothesis for N_{rubisco} , assuming proportionality with Rubisco capacity, and assumes a simple proportionality with LMA for $N_{\text{structure}}$. Our finding of highly significant multiple regression coefficients for both variables indicates that the prediction obtained when taking both into account is more accurate than could be obtained from either variable alone. Osnas et al. (2013), analysing a large global leaf-trait data set and applying a novel method to determine the extent to which different traits are area- vs. mass-

proportional, found leaf N to be an intermediate case. This is to be expected if leaf N is, as our results suggest, a composite of an area-proportional (N_{rubisco}) and a mass-proportional ($N_{\text{structure}}$) component. The two predictors (Rubisco capacity and LMA) are not fully independent, because leaves with higher photosynthetic capacity tend to have higher LMA for structural reasons. But such leaves must have increased structural N as well. By showing independently significant regression coefficients for modelled N_{rubisco} and LMA, the multiple regression results establish that successful prediction of N_{area} requires consideration of both components, and that each has an independent effect, irrespective of their correlation ($r^2 = 0.28$ in this data set). Osnas et al. (2013) also fitted various statistical models for the relationships among leaf traits. Their “model LN” for $\ln N_{\text{area}}$ vs. $\ln \text{LMA}$ yielded a slope of 0.38 (95 % confidence interval 0.36 to 0.40). This value, based on a global data set, can be compared directly with – and is indistinguishable from – our fitted partial regression coefficient of $\ln N_{\text{area}}$ vs. $\ln \text{LMA}$, which is 0.42 (0.34 to 0.49) (Table 1).

In reality, however, leaf N does not consist exclusively of Rubisco and cell-wall constituents. Leaf N includes multiple additional components, including other photosynthetic proteins, proteins of the light-harvesting complexes and electron transport chains, cytosolic proteins, ribosomes and mitochondria, nucleic acids (which account for about 10–15 % of leaf N: Chapin III and Kedrowski, 1983), and N-based defensive compounds. It is possible that the higher N found for N-fixers resides in N-based osmolytes (Erskine et al., 1996) or defence compounds (Gutschick, 1981). Nonetheless, our simplifications suggest that N_{area} – especially at the community level, which is key for large-scale modelling – is, to first order, inherently predictable from leaf morphology and the physical environment. A corollary is that limitation in N supply may act primarily by changing plant allocation patterns (reducing allocation to light capture by leaves while increasing allocation to N uptake by roots), rather than by altering leaf stoichiometry.

4.3 Trait variations within and between species

By testing for acclimation along spatial gradients, the design of our study did not allow phenotypic plasticity to be distinguished from genetic adaptation. Phenotypic plasticity is the ability of a genotype to alter its expressed trait values in response to environmental conditions (Bradshaw, 1965; Sultan, 2000). A part of the observed variation in trait values within species could be due to shifts in the occurrence and frequency of different genotypes, producing different preferred trait values. Thus, when we refer to traits as “plastic”, this should be understood in a broad sense to allow the possibility of a genetic component of the observed adaptive differentiation within species. Seasonal acclimation within individual plants can provide more direct evidence for phenotypic plasticity (Togashi et al., 2017), whereas in this study we disregard pos-

sible seasonal variations and instead relate trait variations to the mean annual environment. However, by sampling all of the species present at each site and including measurements on species at multiple sites, we could distinguish between the contribution of plasticity *sensu lato* (phenotypic plasticity and/or genetic adaptation) vs. species turnover, i.e. the progressive replacement of species with different mean trait values, to spatial variation in the community-mean values of a given trait. We found that $\delta^{13}\text{C}$ was perfectly plastic, perhaps not surprisingly, as variations in $c_i : c_a$ are under stomatal control. In contrast, LMA and N_{area} showed approximately equal contributions from plasticity and species turnover.

4.4 Implications for modelling

There has been a surge of interest in schemes to predict continuous trait variation in DGVMs (e.g. Scheiter et al., 2013; Fyllas et al., 2014; van Bodegom et al., 2014; Ali et al., 2015; Fisher et al., 2015; Meng et al., 2015; Sakschewski et al., 2015). Some trait-based modelling approaches have relied on empirical information on trait–trait and trait–environment covariation, but others (e.g. Scheiter et al., 2013) have aimed to represent the adaptive nature of trait variation explicitly. Our focus has been on testing an explicit adaptive hypothesis for the controls of one key trait, N_{area} , which in addition to a structural component (necessarily linked to LMA) includes an important metabolic component, reflecting the leaf-level investment in photosynthetic proteins. All models that attempt to represent the coupling between C and N cycles in terrestrial ecosystems require a method to calculate leaf N content, given other environmental and plant characteristics. Some models prescribe fixed values of V_{cmax} (per plant functional type), but this approach does not take account of the observed variation in V_{cmax} with environmental conditions. Models that assume proportionality between V_{cmax} and N_{area} neglect the important variation in leaf structural N. We have shown that N_{area} is predictable, to a degree that is useful for modelling, when both metabolic and structural components are taken into account. Our prediction is based on LMA, $c_i : c_a$, and a theoretically predicted value of V_{cmax} based on the co-ordination hypothesis – for which there is strong independent evidence (e.g. Maire et al., 2012). The partial responses of N_{area} to $c_i : c_a$, irradiance, and temperature are consistent with predictions of the co-ordination hypothesis, and the inclusion of predicted V_{cmax} adds significantly and substantially to the predictive power of LMA and $c_i : c_a$ alone. As both LMA (Wright et al., 2005) and $c_i : c_a$ (Prentice et al., 2014) show relationships with environment, our results suggest a possible route towards a general adaptive scheme for the prediction of major leaf traits in DGVMs, which would be an improvement on models that assume a one-to-one relationship between photosynthetic capacity and N_{area} (see e.g. Adams et al., 2016, who showed that there is considerable variation in N_{area} among N-fixers that is unrelated to photosynthetic capacity). Our results also suggest

some priorities for trait data collection and analysis: to test the predicted controls of N_{area} over a wider range of environments, and to test the predicted environmental controls of V_{cmax} directly in the field.

Our application of trait gradient analysis also points out a way towards process-based treatments of functional trait diversity in next-generation models. It is increasingly accepted that models could, and should, sample “species” from continuous gradients of traits rather than fix the traits associated with discrete PFTs. A hybrid approach to modelling N_{area} based on the present analysis would consider N_{area} explicitly as the sum of metabolic and structural components. The metabolic component would be treated as plastic and subject to environmental optimization (in space and time), consistent with the least-cost and co-ordination hypotheses. The structural component would be tied to LMA, which is a key variable of the “leaf economics spectrum” (Wright et al., 2004), strongly expressed both within and between environments and therefore requiring a broad range of values to be assigned to model “species”.

Finally, we note that if our results can be corroborated more widely, this would point to the need for a shift in the way N “limitation” is treated – both in models and in analyses of field data. In studies of the relationship between V_{cmax} and leaf N, for example, it is conventional to plot N on the x axis and V_{cmax} on the y axis, and it is then often stated that the positive relationship found shows that variation in leaf N “causes” variation in V_{cmax} . But all that is shown on the graph is a correlation, and our “plant-centred” interpretation is the opposite of the conventional one: that is, V_{cmax} is adaptively matched (acclimated) to environmental conditions, and the metabolic component of leaf N is a consequence of this acclimation. Low N availability would then result in reduced allocation of C (and N) to leaves, and increased allocation below ground – which is also an adaptive response, but at the whole-plant rather than the leaf level.

Appendix A: Theoretical responses of N_{area} to environmental predictors

We estimate optimal V_{cmax} by $\varphi_0 I_L (c_i + K) / (c_i + 2\Gamma^*)$ (Eq. 5). Holding other variables constant, the sensitivity of this estimate to absorbed PAR is given by the derivative of its natural logarithm with respect to $\ln I_L$:

$$\partial \ln V_{\text{cmax}} / \partial \ln I_L = 1. \quad (\text{A1})$$

Similarly, the sensitivity of this estimate to c_i is given by

$$\partial \ln V_{\text{cmax}} / \partial c_i = (2\Gamma^* - K) / [(c_i + K)(c_i + 2\Gamma^*)] \quad (\text{A2})$$

and its sensitivity to the $c_i : c_a$ ratio is smaller than this by a factor c_a .

Temperature-dependent reaction rates are described by the Arrhenius equation:

$$\ln x(T) - \ln x(T_{\text{ref}}) = (\Delta H/R)(1/T_{\text{ref}} - 1/T), \quad (\text{A3})$$

where x is the rate parameter of interest, T is the measurement temperature (K), T_{ref} is the reference temperature (here 298 K), ΔH is the activation energy of the reaction ($\text{J mol}^{-1} \text{K}^{-1}$), and R is the universal gas constant ($8.314 \text{ J mol}^{-1} \text{K}^{-1}$). Linearizing Eq. (A3) around T_{ref} yields

$$\ln x(T) - \ln x(T_{\text{ref}}) \approx (\Delta H/RT_{\text{ref}}^2) \Delta T, \quad (\text{A4})$$

where $\Delta T = T - T_{\text{ref}}$. Thus, from Eq. (5),

$$\ln V_{\text{cmax}25} \approx \ln V_{\text{cmax}} - (\Delta H_v/RT_{\text{ref}}^2) \Delta T, \quad (\text{A5})$$

where ΔH_v is the activation energy of V_{cmax} . The sensitivity of $V_{\text{cmax}25}$ to T is then

$$\begin{aligned} \partial \ln V_{\text{cmax}25} / \partial T &= \partial \ln V_{\text{cmax}} / \partial T - (\Delta H_v/RT_{\text{ref}}^2) \\ &= (\partial K / \partial T) / (c_i + K) - 2(\partial \Gamma^* / \partial T) / \\ &\quad (c_i + 2\Gamma^*) - (\Delta H_v R / T_{\text{ref}}^2), \end{aligned} \quad (\text{A6})$$

where $K = K_c (1 + O/K_o)$, hence

$$\begin{aligned} \partial K / \partial T &= \partial K_c / \partial T \\ &\quad + [(\partial K_c / \partial T) K_o - (\partial K_o / \partial T) K_c] O / K_o^2, \end{aligned} \quad (\text{A7})$$

where O is the atmospheric concentration of oxygen and Γ^* and the Michaelis–Menten coefficients for carboxylation (K_c) and oxygenation (K_o) respectively have values at T_{ref} (in $\mu\text{mol mol}^{-1}$) and activation energies as given by Bernacchi et al. (2001).

Appendix B: Partial responses of N_{mass} to environmental predictors

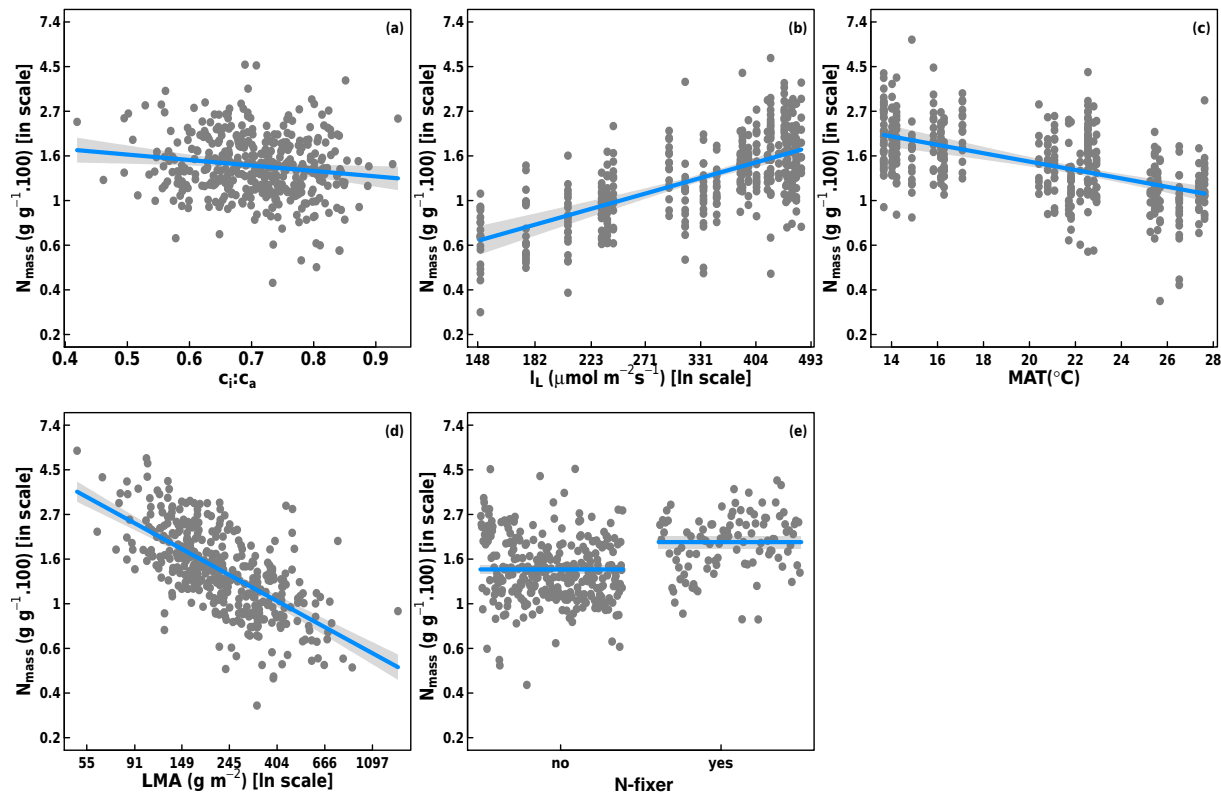


Figure B1. Partial residual plots for the regression of $\ln(N_{\text{mass}} \times 100)$ (g g^{-1}) as a function of $c_i : c_a$ (from $\delta^{13}\text{C}$), \ln (mean canopy PAR, I_L) ($\mu\text{mol m}^{-2} \text{s}^{-1}$), MAT ($^{\circ}\text{C}$), \ln LMA (g m^{-2}), and the factor “N-fixer” at species level.

Table B1. Linear regression coefficients for $\ln(N_{\text{mass}} \times 100)$ (g g^{-1}) as a function of $c_i : c_a$ (from $\delta^{13}\text{C}$), \ln (mean canopy PAR, I_L) ($\mu\text{mol m}^{-2} \text{s}^{-1}$), MAT ($^{\circ}$), \ln LMA (g m^{-2}), and the factor “N-fixer” at species level. Note that N_{mass} was multiplied by 100 before logarithmic transformation.

	Estimated	Predicted	p	R^2
$c_i : c_a$	-0.611 ± 0.252	-0.615	< 0.01	
$\ln I_L$	0.874 ± 0.096	1	< 0.001	
MAT	-0.047 ± 0.007	-0.048	< 0.001	
\ln LMA	-0.585 ± 0.036	n/a	< 0.001	51 %
“N-fixer”	0.306 ± 0.041	n/a	< 0.001	

n/a: not applicable.

Information about the Supplement

Species analyzed in this study can be found in Supplement S1.

The Supplement related to this article is available online at doi:10.5194/bg-14-481-2017-supplement.

Author contributions. Iain Colin Prentice, Ning Dong, and Andrew J. Lowe planned and designed the study; Ning Dong carried out all the field measurements and performed the data analyses. Ning Dong and Iain Colin Prentice wrote the first draft; Bradley J. Evans supported the study through provision of climate data; Ian J. Wright assisted with data interpretation, contributed with ideas throughout, and suggested important improvements to the text. Stefan Caddy-Retalic contributed important ideas to improve the text. All authors contributed to subsequent versions.

Acknowledgements. Research was funded by the Terrestrial Ecosystem Research Network (TERN) through the AusPlots, Australian Transect Network, and eMAST facilities (<http://www.emast.org.au>). Ning Dong was supported by an international Macquarie University Research Scholarship and eMAST facilities. Ian J. Wright has been supported by an Australian Research Council Future Fellowship (FT100100910). Bradley J. Evans has been supported by eMAST. Thanks to the AusPlots Rangelands team (particularly Emrys Leitch, Christina Pahl, and Ben Sparrow) for undertaking fieldwork and detailed consultation; Rosemary Taplin, Ian Fox, Peter Latz, and Emrys Leitch for plant identification; Belinda Medlyn for insisting that the assumptions in the LPJ model must be tested; and Yusuke Onoda for providing the empirical relationship between LMA and cell-wall N. Discussions with Yan-Shih Lin and Han Wang helped to improve the data analysis. This work is a contribution to the AXA Chair Programme in Biosphere and Climate Impacts and the Imperial College Initiative on Grand Challenges in Ecosystems and the Environment.

Edited by: M. Bahn

Reviewed by: three anonymous referees

References

- Ackerly, D. D. and Cornwell, W. K.: A trait based approach to community assembly: partitioning of species trait values into within and among community components, *Ecol. Lett.*, 10, 135–145, 2007.
- Adams, M. A., Turnbull, T. L., Sprent, J. I., and Buchmann, N.: Legumes are different: Leaf nitrogen, photosynthesis, and water use efficiency, *P. Natl. Acad. Sci. USA*, 113, 4098–4103, 2016.
- Ali, A. A., Xu, C., Rogers, A., McDowell, N. G., Medlyn, B. E., Fisher, R. A., Wullschlegel, S. D., Reich, P. B., Vrugt, J. A., Bauerle, W. L., Santiago, L. S., and Wilson, C. J.: Global scale environmental control of plant photosynthetic capacity, *Ecol. Appl.*, 25, 2349–2365, doi:10.1890/14-2111.1, 2015.
- Bernacchi, C. J., Singaas, E. L., Pimentel, C., Portis Jr., A. P., and Long, S. P.: Improved temperature response functions for models of Rubisco limited photosynthesis, *Plant Cell Environ.*, 24, 253–259, 2001.
- Bradshaw, A. D.: Evolutionary significance of phenotypic plasticity in plants, *Adv. Genet.*, 13, 115–155, 1995.
- Cernusak, L. A., Ubierna, N., Winter, K., Holtum, J. A., Marshall, J. D., and Farquhar G. D.: Environmental and physiological determinants of carbon isotope discrimination in terrestrial plants, *New Phytol.*, 200, 950–965, 2003.
- Chapin III, F. S. and Kedrowski, R. A.: Seasonal changes in nitrogen and phosphorus fractions and autumn retranslocation in evergreen and deciduous taiga trees, *Ecology*, 64, 376–391, 1983.
- Chen, J. L., Reynolds, J. F., Harley, P. C., and Tenhunen, J. D.: Co-ordination theory of leaf nitrogen distribution in a canopy, *Oecologia*, 93, 63–69, 1993.
- Dewar, R. C.: The correlation between plant growth and intercepted radiation: an interpretation in terms of optimal plant nitrogen content, *Ann. Bot.*, 78, 125–136, 1996.
- Erskine, P. D., Stewart, G. R., Schmidt, S., Turnbull, M. H., Unkovich, M., and Pate J. S.: Water availability – a physiological constraint on nitrate utilization in plants of Australia semi-arid mulga woodlands, *Plant Cell Environ.*, 19, 1149–1159, 1996.
- Evans, J. R.: Photosynthesis and nitrogen relationships in leaves of C₃ plants, *Oecologia*, 78, 9–19, 1989.
- Evans, J. R. and Seemann, J. R.: The allocation of protein nitrogen in the photosynthetic apparatus: costs, consequences and control, in: *Photosynthesis*, edited by: Brigs, W. R. and Liss, A. R., New York, 183–205, 1989.
- Field, C.: Allocating leaf nitrogen for the maximization of carbon gain: leaf age as a control on the allocation program, *Oecologia*, 56, 34–347, 1983.
- Field, C. and Mooney, H. A.: Photosynthesis and nitrogen relationships in wild plants, in: *On the economy of plant form and function*, edited by: Givnish, T. J., Cambridge University Press, Cambridge, 25–55, 1986.
- Fisher, R. A., Muszala, S., Versteinstein, M., Lawrence, P., Xu, C., McDowell, N. G., Knox, R. G., Koven, C., Holm, J., Rogers, B. M., Lawrence, D., and Bonan, G.: Taking off the training wheels: the properties of a dynamic vegetation model without climate envelopes, *Geosci. Model Dev. Discuss.*, 8, 3293–3357, doi:10.5194/gmdd-8-3293-2015, 2015.
- Fyllas, N., Gloor, E., Mercado, L. M., Sitch, S., Quesada, C. A., Domingues, T. F., Galbraith, D. R., Torre-Lezama, A., Vilanova, E., Ramírez-Angulo, H., Higuchi, N., Neill, D. A., Silveira, M., Ferreira, L., Aymard, G. A., Malhi, Y., Phillips, O. L., and Lloyd, J.: Analysing Amazonian forest productivity using a new individual and trait-based model (TFS v.1), *Geosci. Model Dev.*, 7, 1251–1269, doi:10.5194/gmd-7-1251-2014, 2014.
- Gallego-Sala, A., Clark, J., House, J., Orr, H., Prentice, I. C., Smith, P., Farewell, T., and Chapman, S.: Bioclimatic envelope model of climate change impacts on blanket peatland distribution in Great Britain, *Clim. Res.*, 45, 151–162, 2010.
- Guerschman, J. P., Hill, M. J., Renzullo, L. J., Barrett, D. J., Marks, A. S., and Botha, E. J.: Estimating fractional cover of photosynthetic vegetation, non-photosynthetic vegetation and bare soil in the Australian tropical savanna region upscaling the EO-1 Hyperion and MODIS sensors, *Remote Sens. Environ.*, 5, 928–945, 2009.

- Gutschick, V. P.: Evolved strategies in nitrogen acquisition by plants, *Am. Nat.*, 188, 607–637, 1981.
- Harrison, S. P., Prentice, I. C., Barboni, D., Kohfeld, K. E., Ni, J., and Sutra, J. P.: Ecophysiological and bioclimatic foundations for a global plant functional classification, *J. Veg. Sci.*, 21, 300–317, 2010.
- Haxeltine, A. and Prentice, I. C.: A general model for the light use efficiency of primary production, *Funct. Ecol.*, 10, 551–561, 1996.
- Hikosaka, K. and Shigeno, A.: The role of Rubisco and cell walls in the interspecific variation in photosynthetic capacity, *Oecologia*, 160, 443–451, 2009.
- Kattge, J., Knorr, W., Raddatz, T., and Wirth, C.: Quantifying photosynthetic capacity and its relationship to leaf nitrogen content for global-scale terrestrial biosphere models, *Glob. Change Biol.*, 15, 976–991, 2009.
- Kattge, J., Díaz, S., Lavorel, S., Prentice, I. C., Leadley, P., Bönsch, G., Garnier, E., Westoby, M., Reich, P. B., and Wright, I. J.: TRY – a global database of plant traits, *Glob. Change Biol.*, 17, 2905–2935, 2011.
- Lampert, D. T. and Northcote, D.: Hydroxyproline in primary cell walls of higher plants, *Nature*, 188, 665–666, 1960.
- Leigh, A., Sevanto, S., Ball, M. C., Close, J. D., Ellsworth, D. S., Knight, C. A., Nicotra, A., and Vogel, S.: Do thick leaves avoid thermal damage in critically low wind speeds?, *New Phytol.*, 194, 477–487, 2012.
- Lindeman, R. H., Merenda, P. F., and Gold, R. Z.: Introduction to Bivariate and Multivariate Analysis, Scott, Foresman, Glenview, Illinois, USA, 1980.
- Long, S. P., Postl, W. F., and Bolhar-Nordenkampf, H. R.: Quantum yields for uptake of carbon dioxide in C₃ vascular plants of contrasting habitats and taxonomic groupings, *Planta*, 189, 226–234, 1993.
- Luo, Y., Su, B., Currie, W. S., Dukes, J. S., Finzi, A., Hartwig, U., Hungate, B., McMurtrie, R. E., Oren, R., and Parton, W. J.: Progressive nitrogen limitation of ecosystem responses to rising atmospheric carbon dioxide, *Bioscience*, 54, 731–739, 2004.
- Maire, V., Martre, P., Kattge, J., Gastal, F., Esser, G., Fontaine, S., and Soussana, J. F.: The coordination of leaf photosynthesis links C and N fluxes in C₃ plant species, *PLoS ONE*, 7, e38345, doi:10.1371/journal.pone.0038345, 2012
- Meng, T., Wang, H., Harrison, S. P., Prentice, I. C., Ni, J., and Wang, G.: Responses of leaf traits to climatic gradients: adaptive variation vs. compositional shifts, *Biogeosci.*, 12, 5339–5352, 2015.
- Niinemets, Ü. and Tenhunen, J.: A model separating leaf structural and physiological effects on carbon gain along light gradients for the shade-tolerant species *Acer saccharum*, *Plant, Cell Environ.*, 20, 845–866, 1997.
- Niinemets, Ü.: Global-scale climatic controls of leaf dry mass per area, density, and thickness in trees and shrubs, *Ecology*, 82, 453–469, 2001.
- Onoda, Y., Hikosaka, K., and Hirose, T.: Allocation of nitrogen to cell walls decreases photosynthetic nitrogen-use efficiency, *Funct. Ecol.*, 18, 419–425, 2004.
- Osnas, J. L. D., Lichstein, J. W., Reich, P. B., and Pacala, S. W.: Global leaf trait relationships: mass, area, and the leaf economics spectrum, *Science*, 340, 741–744, 2013.
- Prentice, I. C. and Cowling, S. A.: Dynamic global vegetation models, in: *Encyclopedia of Biodiversity*, 2nd Edn., edited by: Levin, S.A., Waltham, MA, Academic Press, 670–689, 2013.
- Prentice, I. C., Dong, N., Gleason, S. M., Maire, V., and Wright, I. J.: Balancing the costs of carbon gain and water transport: testing a new theoretical framework for plant functional ecology, *Ecol. Lett.*, 17, 82–91, doi:10.1111/ele.12211, 2014.
- Prentice, I. C., Kelley, D. I., Harrison, S. P., Bartlein, P. J., Foster, P. N., and Friedlingstein, P.: Modeling fire and the terrestrial carbon balance, *Global Biogeochem. Cy.*, 25, GB3005, doi:10.1029/2010GB003906, 2011a.
- Prentice, I. C., Meng, T., Wang, H., Harrison, S. P., Ni, J., and Wang, G.: Evidence of a universal scaling relationship for leaf CO₂ drawdown along an aridity gradient, *New Phytol.*, 190, 169–180, 2011b.
- R Core Team: R: A language and environment for statistical computing, R Foundation for Statistical Computing, Vienna, Austria, <http://www.R-project.org/> (last access: 17 January 2017), 2015.
- Reich, P. B., Walters, M. B., and Ellsworth, D. S.: Leaf age and season influence the relationships between leaf nitrogen, leaf mass per area and photosynthesis in maple and oak trees, *Plant Cell Environ.*, 14, 251–259, 1991.
- Sakschewski, B., von Bloh, W., Boit, A., Rammig, A., Kattge, J., Poorter, L., Peñuelas, J., and Thonicke, K.: Leaf and stem economics spectra drive diversity of functional plant traits in a dynamic global vegetation model, *Glob. Change Biol.*, 21, 2711–2725, 2015.
- Scheiter, S., Langan, L., and Higgins, S. I.: Next-generation dynamic global vegetation models: learning from community ecology, *New Phytol.*, 198, 957–969, doi:10.1111/nph.12210, 2013.
- Sitch, S., Smith, B., Prentice, I. C., Arneth, A., Bondeau, A., Cramer, W., Kaplan, J. O., Levis, S., Lucht, W., and Sykes, M. T.: Evaluation of ecosystem dynamics, plant geography and terrestrial carbon cycling in the LPJ dynamic global vegetation model, *Glob. Change Biol.*, 9, 161–185, 2003.
- Smith, B., Prentice, I. C., and Sykes, M. T.: Representation of vegetation dynamics in the modelling of terrestrial ecosystems: comparing two contrasting approaches within European climate space, *Glob. Ecol. Biogeogr.*, 10, 621–637, 2001.
- Stocker, B. D., Roth, R., Joos, F., Spahni, R., Steinacher, M., Zaehele, S., Bouwman, L., and Prentice, I. C.: Multiple greenhouse-gas feedbacks from the land biosphere under future climate change scenarios, *Nature Climate Change*, 3, 666–672, doi:10.1038/nclimate1864, 2013.
- Sultan, S. E.: Phenotypic plasticity for plant development, function and life history, *Trends Plant Sci.*, 5, 537–542, doi:10.1016/S1360-1385(00)01797-0, 2000.
- Takashima, T., Hikosaka, K., and Hirose, T.: Photosynthesis or persistence: nitrogen allocation in leaves of evergreen and deciduous *Quercus* species, *Plant Cell Environ.*, 27, 1047–1054, 2004.
- Thornton, P. E., Lamarque, J. F., Rosenbloom, N. A., and Mahowald, N. M.: Influence of carbon-nitrogen cycle coupling on land model response to CO₂ fertilization and climate variability, *Global Biogeochem. Cy.*, 21, GB4018, doi:10.1029/2006GB002868, 2007.
- Togashi, H. F., Prentice, I. C., Atkin, O. K., Macfarlane, C., Prober, S., and Bloomfield, K.: Acclimation of leaf photosynthetic traits to temperature in an evergreen woodland, consistent with the coordination hypothesis, in review, 2017.

- Van Bodegom, P. M., Douma, J. C., and Verheijen, L. M.: A fully traits-based approach to modeling global vegetation distribution, *P. Natl. Acad. Sci. USA*, 111, 13733–13738, 2014.
- White, A., Sparrow, B., Leitch, E., Foulkes, J., Flitton, R., Lowe, A. J., and Caddy-Retalic, S.: *AusPlots Rangelands Survey Protocols Manual, Version 1.2.9.*, University of Adelaide Press, 2012.
- Wohlfahrt, G., Bahn, M., Haubner, E., Horak, I., Michaeler, W., Rottmar, K., Tappeiner, U., and Cernusca, A.: Inter-specific variation of the biochemical limitation to photosynthesis and related leaf traits of 30 species from mountain grassland ecosystems under different land use, *Plant Cell Environ.*, 22, 1281–1296, 1999.
- Wright, I. J. and Cannon, K.: Relationships between leaf lifespan and structural defences in a low-nutrient, sclerophyll flora, *Funct. Ecol.*, 15, 351–359, 2001.
- Wright, I. J. and Westoby, M.: Leaves at low versus high rainfall: coordination of structure, lifespan and physiology, *New Phytol.*, 155, 403–416, 2002.
- Wright, I. J., Reich, P. B., and Westoby, M.: Least-cost input mixtures of water and nitrogen for photosynthesis, *Am. Nat.*, 161, 98–111, 2003.
- Wright, I. J., Reich, P. B., Westoby, M., Ackerly, D. D., Baruch, Z., Bongers, F., Cavender-Bares, J., Chapin, T., Cornelissen, J. H. C., Diemer, M., Flexas, J., Garnier, E., Groom, P. K., Gulias, J., Hikosaka, K., Lamont, B. B., Lee, T., Lee, W., Lusk, C., Midgley, J. J., Navas, M.-L., Niinemets, U., Oleksyn, J., Osada, N., Poorter, H., Poot, P., Prior, L., Pyankov, V. I., Roumet, C., Thomas, S. C., Tjoelker, M. G., Veneklaas, E. J., and Villar, R.: The worldwide leaf economics spectrum, *Nature*, 428, 821–827, 2004.
- Wright, I. J., Reich, P. B., Cornelissen, J. H. C., Falster, D. S., Groom, P. K., Hikosaka, K., Lee, W., Lusk, C. H., Niinemets, Ü., Oleksyn, J., Osada, N., Poorter, H., Warton, D. I., and Westoby, M.: Modulation of leaf economic traits and trait relationships by climate, *Global Ecol. Biogeogr.*, 14, 411–421, 2005.
- Xu-Ri and Prentice, I. C.: Terrestrial nitrogen cycle simulation with a dynamic global vegetation model, *Glob. Change Biol.*, 14, 1745–1764, 2008.
- Zachle, S. and Friend, A. D.: Carbon and nitrogen cycle dynamics in the O-CN land surface model: 1. Model description, site-scale evaluation, and sensitivity to parameter estimates, *Global Biogeochem. Cy.*, 24, GB1005, doi:10.1029/2009GB003521, 2010.



Biogeosciences

[BACK TO RESULTS](#)[Click for Open Access](#)

Basic Description	Other Editions/Formats	Abstracting/ Indexing & Article Access	Publisher & Ordering Information	Advertising, Rights, Demographics	Reviews
-------------------	------------------------	----------------------------------------	----------------------------------	-----------------------------------	---------

JCR[®]Web

Click highlighted text for a new search on that item.

ISSN:	1726-4170
Title:	Biogeosciences
Publishing Body:	Copernicus GmbH
Country:	Germany
Status:	Active
Start Year:	2003
Frequency:	Monthly
Document Type:	Journal; Academic/Scholarly
Refereed:	Yes
Abstracted/Indexed:	Yes
Media:	Print
Alternate Edition	1726-4189
ISSN:	
Language:	Text in English
Price:	EUR 1,160 subscription per year EUR 106 newsstand/cover (effective 2009)
Subject:	BIOLOGY EARTH SCIENCES
Dewey #:	550
LC#:	QH343.7
URL:	http://www.biogeosciences.net/recent_papers.html
Description:	Dedicated to the publication and discussion of research articles, short communications and review papers on all aspects of the interactions between the biological, chemical and physical processes in terrestrial or extraterrestrial life with the geosphere, hydrosphere and atmosphere.

[Back to Top](#)Add this item to:
 + ADD**Request this title:**
I'd like to request this title. **GO**[Print](#) • [Download](#) • [E-mail](#)**Corrections:**
Submit corrections to Ulrich's about this title. **GO****Publisher of this title?**
If yes, click GO! to contact Ulrich's about updating your title listings in the Ulrich's database. **GO**[Back to Top](#)