

Macquarie University ResearchOnline

This is the published version of:

Xu Zhou, Zhou Fan, Zhaoji Jiang, M. C. B. Ashley, Xiangqun Cui, Longlong Feng, Xuefei Gong, Jingyao Hu, C. A. Kulesa, J. S. Lawrence, Genrong Liu, D. M. Luong-Van, Jun Ma, A. M. Moore, Weijia Qin, Zhaohui Shang, J. W. V. Storey, Bo Sun, T. Travouillon, C. K. Walker, Jiali Wang, Lifan Wang, Jianghua Wu, Zhenyu Wu, Lirong Xia, Jun Yan, Ji Yang, Huigen Yang, Xiangyan Yuan, D. York, Zhanhai Zhang, And Zhenxi Zhu (2010) The First release of the CSTAR Point Source Catalog from Dome A, Antarctica *Publications of the Astronomical Society of the Pacific*, Vol. 122, No. 889 (2010), p.347-353

Access to the published version: <http://dx.doi.org/10.1086/651526>

Copyright:

Copyright 2010 by University of Chicago Press. Originally published in *Publications of the Astronomical Society of the Pacific*.

The First Release of the CSTAR Point Source Catalog from Dome A, Antarctica

XU ZHOU,^{1,2} ZHOU FAN,¹ ZHAOJI JIANG,^{1,2} M. C. B. ASHLEY,³ XIANGQUN CUI,^{2,4} LONGLONG FENG,^{2,5} XUEFEI GONG,^{2,4}
JINGYAO HU,^{1,2} C. A. KULESA,⁶ J. S. LAWRENCE,^{3,7,8} GENRONG LIU,⁴ D. M. LUONG-VAN,³ JUN MA,¹
A. M. MOORE,⁹ WEIJIA QIN,¹⁰ ZHAOHUI SHANG,¹¹ J. W. V. STOREY,³ BO SUN, T. TRAVOUILLO, ⁹
C. K. WALKER,⁶ JIALI WANG,^{1,2} LIFAN WANG,^{2,5} JIANGHUA WU,¹ ZHENYU WU,¹ LIRONG XIA,⁴
JUN YAN,^{1,2} JI YANG,⁵ HUIGEN YANG,¹⁰ XIANGYAN YUAN,^{2,4} D. YORK,¹²
ZHANHAI ZHANG,¹⁰ AND ZHENXI ZHU^{2,5}

Received 2009 November 23; accepted 2010 January 25; published 2010 February 24

ABSTRACT. In 2008 January the twenty-fourth Chinese expedition team successfully deployed the Chinese Small Telescope ARray (CSTAR) to Dome A, the highest point on the Antarctic plateau. CSTAR consists of four 14.5 cm optical telescopes, each with a different filter (*g*, *r*, *i*, and open) and has a $4.5^\circ \times 4.5^\circ$ field of view (FOV). It operates robotically as part of the Plateau Observatory, PLATO, with each telescope taking an image every ~ 30 s throughout the year whenever it is dark. During 2008, CSTAR 1 performed almost flawlessly, acquiring more than 0.3 million *i*-band images for a total integration time of 1728 hr during 158 days of observations. For each image taken under good sky conditions, more than 10,000 sources down to $\sim 16^{\text{th}}$ magnitude could be detected. We performed aperture photometry on all the sources in the field to create the catalog described herein. Since CSTAR has a fixed pointing centered on the south celestial pole (decl. = -90°), all the sources within the FOV of CSTAR were monitored continuously for several months. The photometric catalog can be used for studying any variability in these sources, and for the discovery of transient sources such as supernovae, gamma-ray bursts, and minor planets.

Online material: color figures

1. INTRODUCTION

The Antarctic plateau has great potential for astronomical observations as it is extremely cold and dry and has a calm and tenuous atmosphere—attributes that are particularly favorable for optical, infrared, and submillimeter observations. For photometry, there is the advantage of reduced scintillation as a result of the decreased high-altitude turbulence above the Antarctica plateau. (Kenyon et al. 2006). In addition, there is the possibility of long, continuous observations uninterrupted by

the usual diurnal cycle, giving access to a time-series regime otherwise only available from space (Kenyon & Storey 2006; Mosser & Aristidi 2007; Rauer et al. 2008).

Astronomers have been interested in the Antarctic plateau for over 30 years (see Indermuhle et al. 2005 for a historical account). The first stellar photometry from Antarctica was conducted at the South Pole by Taylor et al. (1988) in the late 1980s. More recently, Strassmeier et al. (2008) have conducted continuous time-series observations from Dome C with sIRAIT, a small f/12 optical telescope. The ASTEP South project has reported 1592 hr of observations of the south celestial pole from Dome C during 2008 using a 10 cm refractor and 4096×4096 pixel CCD camera (Crouzet et al. 2009).

At optical wavelengths most of the attention is now focused on the Concordia station at Dome C, where excellent cloud-cover statistics, low free-atmosphere seeing, and a relatively thin turbulent boundary layer have been measured, as summarized in, e.g., Storey (2005). For example, Lawrence et al. (2004) investigated the seeing at Dome C and reported that the median seeing above the boundary layer is $0.27''$, and for 25% of the time is as low to $0.15''$. Thus, for some observations even a small telescope at Dome C can be as effective as a much larger one at the best temperate observatories.

Dome A is located at longitude $77^\circ 06' 57''$ E, latitude $80^\circ 25' 08''$ S, and is 1271 km directly inland from the Chinese

¹ National Astronomical Observatories, Chinese Academy of Sciences, Beijing, 100012, China; zhouxu@bao.ac.cn.

² Chinese Center for Antarctic Astronomy.

³ School of Physics, University of New South Wales, NSW 2052, Australia.

⁴ Nanjing Institute of Astronomical Optics and Technology, Nanjing 210042, China.

⁵ Purple Mountain Observatory, Nanjing 210008, China.

⁶ Steward Observatory, University of Arizona, Tucson, AZ 85721.

⁷ Current address: Macquarie University & Anglo-Australian Observatory.

⁸ Anglo-Australian Observatory, Epping, NSW 2121, Australia.

⁹ Department of Astronomy, California Institute of Technology, Pasadena, CA 91125.

¹⁰ Polar Research Institute of China, Pudong, Shanghai 200136, China.

¹¹ Tianjin Normal University, Tianjin 300074, China.

¹² Department of Astronomy and Astrophysics and Enrico Fermi Institute, University of Chicago, Chicago, IL 60637.

Zhongshan Station. The elevation of Dome A is 4093 m above sea level, the temperature is quite low (sometimes below -80°C), the surface wind speeds are even lower than those at Dome C, and the precipitable water vapor is extraordinarily low (Kulesa et al. 2010, in preparation). The seeing at Dome A from above the boundary layer may be better than that at Dome C, and the boundary layer itself should be thinner—perhaps as low as 15 m for much of the time.

Recently, Saunders et al. (2009) compared Domes A, B, C, and F, and Ridges A and B with respect to cloud cover, boundary layer thickness, auroral emission, free-atmosphere seeing, precipitable water vapor, and surface temperature—and concluded that Dome A is possibly the best site on earth currently being used for astronomical observations.

Because of the potential opportunities offered by Dome A for astronomy and other scientific studies, a permanent station, *Kunlun Station*, was established at Dome A by the twenty-fifth Chinese expedition team in 2009 January.

In early 2007, Chinese astronomers began the development of CSTAR, with an extensive testing program (Zhou et al. 2009). In November of that year, the CSTAR system was shipped to Antarctica as part of the Plateau Observatory (PLATO) (Lawrence et al. 2008; Yang et al. 2009), and commissioned at Dome A in 2008 January. CSTAR began observations from Dome A in 2008 March, as soon as the sky became sufficiently dark. During the year, we were typically able to return one image per day, and roughly one-third of the photometric catalog (less than 3000 bright stars) via Iridium satellite. CSTAR worked well until early August, when the PLATO power system shut down. The twenty-fifth Chinese expedition team returned to Dome A in 2009 January, retrieving all of the data, including images and catalogs that were stored on a large hard disk. The Dome A data are valuable as they have many potential uses, from site characterization to the study of astronomical sources such as variable stars, supernovae, gamma-ray bursts, and extrasolar planets. A separate article analyzing the weather statistics of the Dome A site from CSTAR data is forthcoming (Zou et al. 2010).

This paper is organized as follows. A description of CSTAR and the data reduction method are presented in § 2. The observations from Dome A are described in § 3. In § 4, we describe the data processing of these observations used to produce the catalog. In § 5, we discuss the photometric accuracy of the catalog. A final summary is presented in § 6.

2. CSTAR

2.1. The Instrument

The CSTAR program is conducted under the auspices of the Chinese Center for Antarctic Astronomy. The telescopes were built by the Nanjing Institute of Astronomical Optics & Technology (NIAOT) (Yuan et al. 2008), while the hardware and software of the data acquisition system were developed by

the National Astronomical Observatories, Chinese Academy of Sciences (NAOC) (Zhou et al. 2009). CSTAR consists of four 14.5 cm Schmidt telescopes, each with a different filter: *g*, *r*, *i*, and open. The FOV is $4.5^{\circ} \times 4.5^{\circ}$ (20 deg^2). Each telescope is equipped with an Andor DV435 $1\text{k} \times 1\text{k}$ CCD, giving a pixel size of about $15''$ in the sky. A 750 GB hard disk is used as the main storage, with all the software including the Windows XP operating system installed in a 4 GB Compact Flash memory. An 8 GB solid state disk is used in each computer to back up the most important data. The computer system can work at temperatures down to -30°C , and is installed inside the PLATO instrument module where it is kept well above this temperature by the PLATO thermal management system (Luong-Van et al. 2008). The CCD cameras and electronics are installed outside on the CSTAR telescopes, where the ambient temperature can be lower than -80°C .

Before its deployment to Dome A, the CSTAR data acquisition system was tested at Kalasu on the high plateau of Pamir in China, close to Tajikistan. At an elevation of 4450 m and with temperatures that plunged to -18°C during the tests, Kalasu provides an excellent environment for predeployment testing of astronomical instruments for Dome A. The complete CSTAR system was also tested at the NAOC's Xinglong Observatory at the beginning of 2007 September. Details of these tests are presented in Zhou et al. (2009).

In Zhou et al. (2009) we also describe the data-acquisition procedure and automatic photometric pipeline used to perform aperture photometry on all the point sources in our images. The apertures for the photometry are 3, 4, and 5 pixels in radius, and the inner and outer radii of the sky annulus are 10 and 20 pixels, respectively.

The typical FWHM of the point-spread function (PSF) of a stellar image taken by CSTAR 1 is between 1.5 and 2.5 pixels. The spot diagram under laboratory conditions, 20°C and 1 atm pressure, is shown in Yuan et al. (2008). The optical system may have suffered some misalignment from vibration during the almost 1300 km sled traverse from Zhongshan Station to Dome A. It is also possible that there were some optical alignment changes due to the low ambient temperature at Dome A, although this was allowed for in the design. An image from CSTAR 1, A5CH5029.fit, is shown in Figure 1 to illustrate the realized optical quality at Dome A, where $\sim 90\%$ of the light energy is encircled in 2 pixels.

3. OBSERVATIONS AT DOME A

CSTAR observed robotically at Dome A from 2008 March 4 until 2008 August 8 (see Fig. 2), taking an image with each telescope whenever it was dark enough to do so. The exposure time was changed from 20 s to 30 s on April 4. The CCD is a frame-transfer CCD, which allows us to operate without a mechanical shutter. We read out the image after each exposure and performed a real-time data reduction for producing an initial catalog. A dead time of ~ 2.61 s results in times between

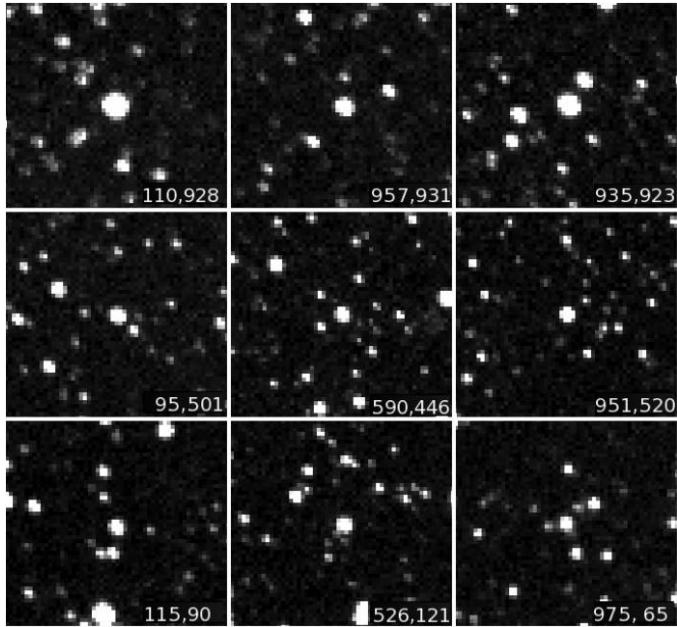


FIG. 1.—50 pixel subimages of the image A5CH5029.fit are used to show the PSF located in the center, four corners, and four sides of the FOV.

exposures of 22.61 s through April 3, and 32.61 s thereafter. Images were not taken if the sky was too bright. For a variety of technical reasons only CSTAR 1 produced images of good optical quality during 2008. There are 16,918, 50,575, 68,157, 110,357, 58,711, and 5749 of these images from March, April,



FIG. 2.—CSTAR during a midwinter full moon at Dome A, Antarctica, on 2008 Jun 17. This image was taken by a camera on the roof of PLATO's Instrument Module (Lawrence et al. 2008). The four CSTAR telescopes are in the box on the tripod, pointing away from the camera. For scale, the top of the CSTAR box is about 1.8 m above the snow.

May, June, July, and August, respectively. The total exposure times in these months were 67.4 hr, 311.4 hr, 378.7 hr, 613.1 hr, 326.2 hr, and 31.9 hr, respectively, giving a total exposure time of 1728 hr. We plot the distribution of integrated exposure time for each month in Figure 3. The integrated exposure time in June is the longest and is over one-third of the total exposure time, while the exposure time in August is the shortest due to the shutdown of the PLATO power system.

4. DATA REDUCTION

We have developed a pipeline for image processing and photometry that includes bias and flat-field correction, and then performs aperture photometry (Zhou et al. 2009). This work was undertaken during testing CSTAR at NAOC's Xinglong Station. The quality of the images taken at Dome A was significantly better than those obtained at Xinglong due to the lower CCD temperature and improved sky conditions.

4.1. Flat Fielding

We constructed a flat-field image, shown in Figure 4, from a median of images taken with a high sky background, after removal of stars using sigma clipping. To correct for variations in the flat-field over large spatial scales, we selected more than 50,000 images taken under conditions of good transparency and looked for systematic changes in the brightnesses of stars during their daily circular motion around the South Pole. This allowed us to create an additional “residual flat-field” correction that improved our photometric accuracy.

For this first release of the catalog we have not checked the variation of the flat field during the year, nor with CCD temperature. The next release will include improved flat fielding

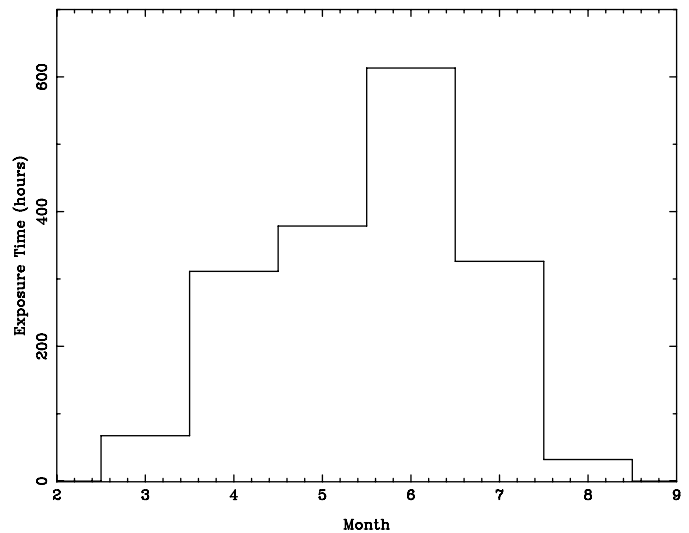


FIG. 3.—Integrated CSTAR exposure time for each month during 2008.

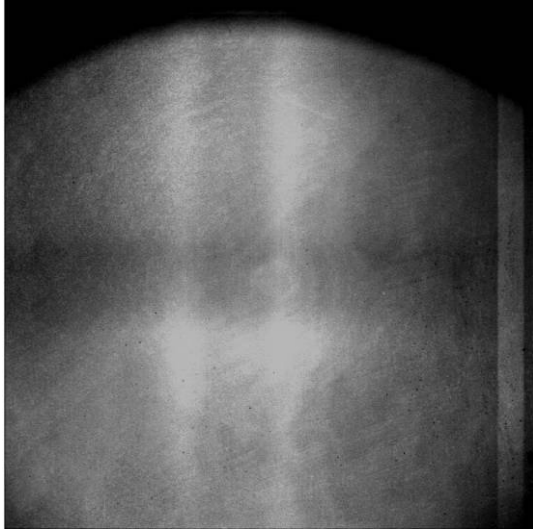


FIG. 4.—Flat-field image used for CSTAR 1.

using images taken under photometric conditions with high sky background (i.e., during twilight or bright moon).

4.2. Absolute Flux Calibration

An image, A5CH5029, was taken under relatively good photometric conditions (17:50:29 UT, 2008 May 5) and was used as a standard image for calibrating magnitude offsets. For each of the other images, we derived a single magnitude offset, to be applied to all the stars on the image, from the mean of the magnitude offsets of a selection of bright stars.

The USNO-B catalog (Monet et al. 2003) contains stellar magnitudes in the optical passbands B1, B2, R1, R2, and I2 for over one billion objects over the whole sky. The catalog is complete down to $V = 21$ mag, with a positional accuracy of $0.2''$ at J2000 and a photometric accuracy of better than 0.3 magnitudes in the five colors. Since the USNO-B catalog contains such well-calibrated magnitudes of the point sources in our observed field, we elected to use these objects for our flux calibration. Fortunately, Monet et al. (2003) have derived a formula for transforming the USNO-B1.0 magnitudes to those appropriate to the Sloan Digital Sky Survey (SDSS) filters, based on ~ 450 deg² of SDSS Early Data Release. Since the CSTAR filters were chosen to be very similar to the SDSS filters, we can use this formula directly. We determine $i_{\text{CSTAR}} - i_{\text{USNO}} = 4.16 \pm 0.12$ with 48 field stars. The differences between CSTAR instrumental magnitude and SDSS magnitudes of these stars are shown in Figure 5. The offset was used to transform the CSTAR instrumental magnitudes to SDSS i -band magnitudes. To reduce statistical measurement errors, we only selected the brightest stars for the offset calibration. We plan to do further work on choosing well-calibrated standard stars for our next run of the data reduction pipeline.

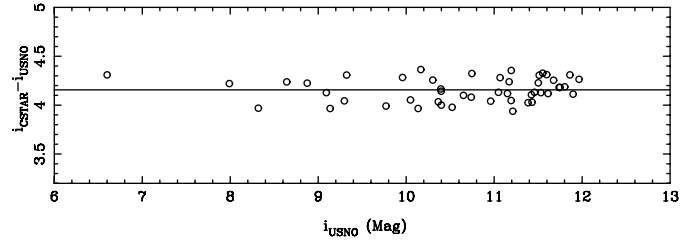


FIG. 5.—Comparison of the USNO-B1 i -band magnitudes and CSTAR instrumental magnitudes for 48 stars. The average offset is $\Delta i = 4.16 \pm 0.12$ mag.

4.3. Time Calibration

The CSTAR 3 computer included a GPS receiver to maintain time synchronization and this time was intended to be distributed to the other CSTAR computers. However, there was a communication problem between CSTAR 3 and the other computers throughout the year. As a result, the timing of CSTAR 1 ran independently and at its own rate for the entire observation period. While this would normally create an intractable data-reduction problem—particularly when determining the epochs of transient events and eclipses—in this case it is easily corrected. CSTAR is fixed in position and points at the south celestial pole. Every star traces out a circle on the CCD, and the position of each star can be used as a clock. To identify the stars, we calculate the rotation and shift of every image relative to a standard image using the positions of all the bright stars. The mean rotation angle relative to the standard image is then used

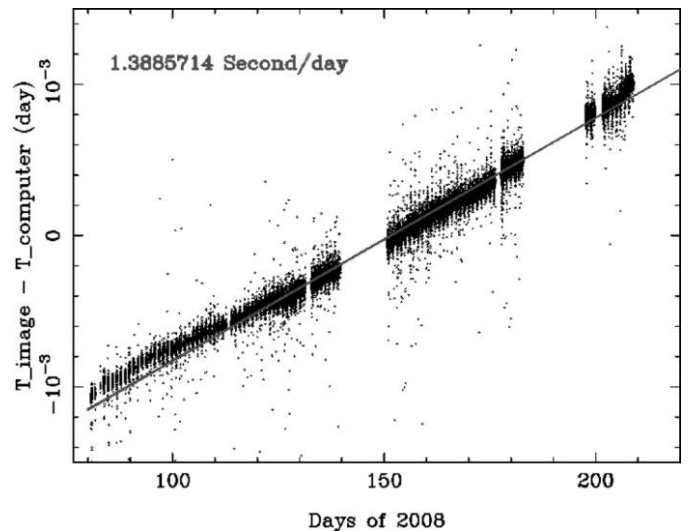


FIG. 6.—Difference between computer time and the true local time throughout the observational period. The true local time was obtained from the star positions on the images. See the electronic edition of the *PASP* for a color version of this figure.

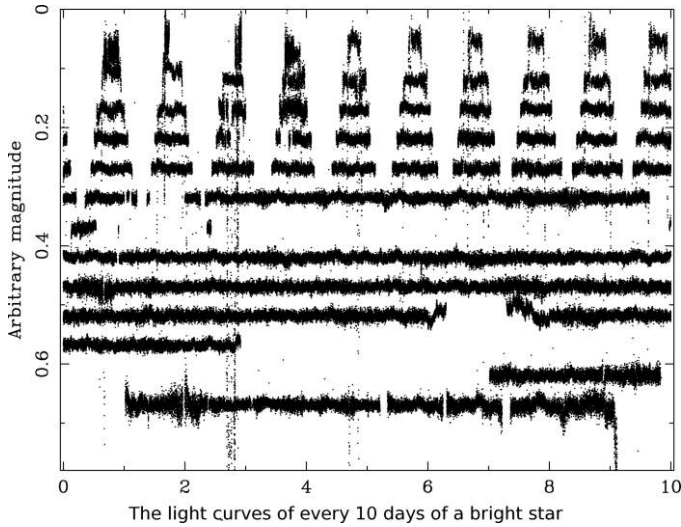


FIG. 7.—Light curve of HIP 48752 = GSC 9518:379 at $09^{\text{h}}57^{\text{m}}43.3^{\text{s}}$, $-89^{\circ}47'02.2''$, a 8.2 mag star. The gaps at the top of the Figure are due to twilight.

to derive the rate of drift of computer time. In this way, precise timing can be determined. We find that the computer clock typically runs $1.3885714 \text{ s day}^{-1}$ slower than the real local time. Figure 6 shows the time difference between the computer time and the real time obtained from the star positions during a period of 140 days of observation. The computer time on 2008 January 25 should be correct, because the computer time was manually set to GPS time (UT) on that date. In the catalog we present the corrected Julian time at the midexposure point of every image. This time should be accurate to a few seconds.

5. PHOTOMETRIC ACCURACY

In addition to the statistical errors in the star and background brightness measurements, there are several systematic errors that may affect the derived stellar fluxes. The main systematic errors are:

1. Residual flat-field and bias correction errors. Light curves of all of the stars that had no significant variation were used to improve the flat-field correction map. However, a single flat-field and bias image was used for all observations, with no attempt to allow for temperature variations or instrumental drifts. This may have introduced systematic errors with each star tracing out a circle on the CCD.

2. PSF variation. The CSTAR telescopes have a large FOV, $>20 \text{ deg}^2$, making it impossible for the optical design to keep the PSF uniform over all parts of the image. Since we used a fixed aperture to measure the magnitudes of the stars, there will be some measurement error from the PSF variation depending on the star location within the image.

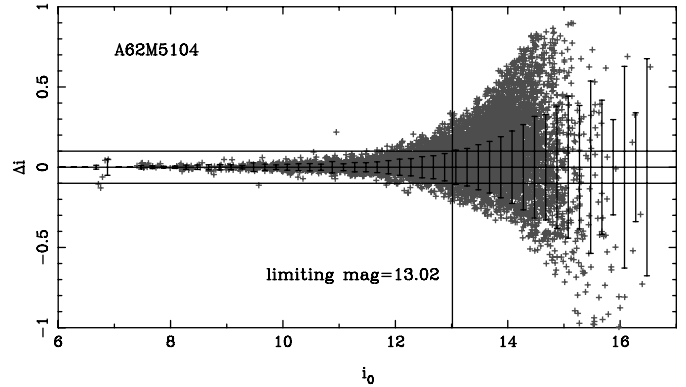


FIG. 8.—Estimate of the photometric error for all the point sources of A62M5104. The error bars represent the 1σ errors. The two horizontal lines represent $\Delta \text{mag} = 0.1$, while the vertical line shows the corresponding limiting magnitude of 13.02 at $S/N = 10$. See the electronic edition of the *PASP* for a color version of this figure.

3. Undersampling. Each pixel of the CSTAR CCD is $15''$, so the light from a star might fall on only one or two pixels, with resultant problems from intrapixel sensitivity variations.

4. Aurorae and thin cirrus clouds. These introduce an inhomogeneity in the sky background, especially during full moon. In the case of cirrus, there will be a resultant variable extinction across the FOV. The photometric calibration can therefore differ from one star to another. The sky background for each star is also difficult to estimate in the presence of cirrus.

The systematic photometric error exceeds other sources of error when observing bright stars. As an example, we plot the

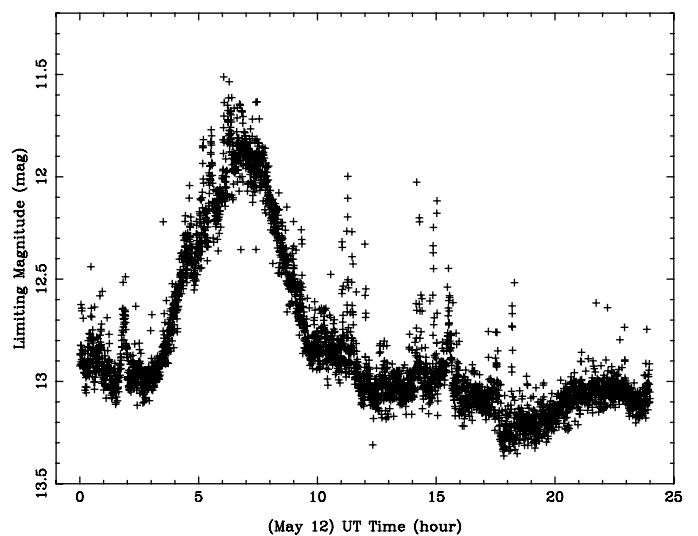


FIG. 9.—Limiting magnitudes for one whole day (24 hr) of images on 2008 May 12.

TABLE 1
 PHOTOMETRY OF SEVERAL SOURCES IN THREE DIFFERENT APERTURES;
 CATALOG HEADER: -59 2008 JUNE 02 22:50:42.20 20 *i* 10398 154.954086

Number	R.A.	Declination	$M1$	$M2$		$M3$		σ_3
	(J2000)	(J2000)	($r = 3$ pixel)	σ_1	($r = 4$ pixels)	σ_2	($r = 5$ pixels)	
277	23:23:46.274	-89:25:17.81	11.095	0.022	11.011	0.022	10.838	0.025
278	10:43:24.023	-88:42:00.78	11.099	0.026	11.048	0.022	11.013	0.022
279	16:13:39.187	-87:44:30.11	11.100	0.026	11.030	0.022	11.014	0.022
280	14:09:08.706	-89:07:12.63	11.100	0.026	11.035	0.022	10.987	0.022
281	13:46:15.127	-88:26:01.94	11.100	0.026	11.013	0.022	10.885	0.025
282	17:54:27.175	-89:42:21.70	11.103	0.026	11.065	0.022	11.032	0.022

NOTE.—Catalog header parameters are decoded as: CCD temperature ($^{\circ}\text{C}$), date, exposure time (in seconds), the number of sources detected in the image, day of the year during 2008. The catalogs can be downloaded from National Astronomical Observatories Science Data Center, Chinese Academy of Science at <http://archive.bao.ac.cn/en/cstar>.

light curve of a bright star (HIP 48752, GSC 9518:379) of $i = 8.2$ mag at ($09^{\text{h}}57^{\text{m}}43.3^{\text{s}}$, $-89^{\circ}47'02.2''$) in Figure 7. This Figure shows the light curves for every 10 days, with an arbitrary magnitude offset. From examining the best quality images, the rms of the light curve variation is about 0.003 mag. We expect that the systematic error should be smaller than 0.003 mag.

To estimate the overall real measurement error for each field star in the image, we compared every image to a standard image. The standard image, A5CH5029, was taken under relatively good photometric conditions (17:50:29 UT, 2008 May 5). By comparison of the calibrated magnitudes of all the stars in the two images, we can plot the rms error as a function of the magnitude of the stars.

As an example, in Figure 8 we show the distribution of the measurement difference in magnitude for every star obtained from image A62M5104 and the standard image A5CH5029. We divided the magnitude range into small bins of 0.2 mag, then calculated the 1σ dispersion of the magnitude as the “real measurement error” in each magnitude interval. The error bars as a function of magnitude as shown in Figure 8 were then applied to all the measurements in the catalog for that image.

We defined the magnitude limit of our images as the magnitude which has a 1σ RMS error of 0.1 mag, which corresponds to signal-to-noise ratio (S/N) = 10.

As a byproduct of estimating the measurement error, the magnitude limit is also obtained for each image. In Figure 9 we plot the limiting magnitude distribution for all of the images taken over the 24 hr during 2008 May 12. The limiting magnitude changes with time because of variations in atmospheric extinction and sky brightness.

The final output from our data reduction is a catalog of star magnitudes for each image, see Table 1. The contents of the catalog are arranged as follows: Image number, R.A., decl. and the magnitudes ($M1$, etc.) and errors (σ_1 , etc.) in aperture photometry obtained with radii of 3 pixels, 4 pixels, and 5 pixels, respectively. The header of the catalog provides some additional information: the CCD temperature, the date and corrected time (UT) at the exposure midpoint, exposure time (in seconds), sky

brightness (ADU), filter number, and number of sources found in the image.

6. SUMMARY AND CATALOG AVAILABILITY

The CSTAR Point Source Catalog first release contains 1728 hr of i -band photometry data taken by CSTAR 1 at Dome A, Antarctica, between 2008 March 4 and 2008 August 8. The data are from a fixed field of view of $4.5^{\circ} \times 4.5^{\circ}$ centered on the south celestial pole, with an image taken approximately every 30 s for the majority of the observation period. Aperture photometry was used to derive the magnitude of each of the 10,000 stars that were typically identified in each of the 300,000 images. The data have been flux calibrated using 48 standard stars to link to the USNO-B1.0 photometric system. The CSTAR catalog is available online.¹³

This study has been supported by the Chinese National Natural Science Foundation through grants 10873016, 10803007, 10473012, 10573020, 10633020, 10673012, and 10603006, and by the National Basic Research Program of China (973 Program), No. 2007CB815403. This research is also supported by the Chinese PANDA International Polar Year project, the Polar Research Institute of China (PRIC), and the international science and technology cooperation projects 2008DFA20420 of the Ministry of Science and Technology of China. The PLATO observatory was supported by the Australian Research Council and the Australian Antarctic Division. Iridium communications were provided by the US National Science Foundation and the United States Antarctic Program. The authors wish to thank all members of the 2008 and 2009 PRIC Dome A expeditions for their heroic effort in reaching the site and for providing invaluable assistance to the expedition astronomers in setting up and servicing the PLATO observatory and its associated instrument suite. Additional financial contributions have been made by the institutions involved in this collaboration.

¹³ At <http://archive.bao.ac.cn/en/cstar>.

REFERENCES

- Crouzet, N., et al. 2009, preprint arXiv0912.2644C
- Indermuehle, B. T., Burton, M. G., & Maddison, S. T. 2005, *Publ. Astron. Soc. Australia*, 22, 73
- Kenyon, S. L., Lawrence, J. S., Ashley, M. C. B., Storey, J. W. V., Tokovinin, A., & Fossat, E. 2006, *PASP*, 118, 924
- Kenyon, S. L., & Storey, J. W. V. 2006, *PASP*, 118, 489
- Lawrence, J. S., Ashley, M. C. B., Tokovinin, A., & Travouillon, T. 2004, *Nature*, 431, 278
- Lawrence, J. S., et al. 2008, *Proc. SPIE*, 7012, 701227
- Luong-Van, D. M., Ashley, M. C. B., Everett, J. R., Lawrence, J. S., & Storey, J. W. V. 2008, *Proc. SPIE*, 7019, 70192U
- Monet, D. G., Levine, S. E., & Canzian, B., et al. 2003, *AJ*, 125, 984
- Mosser, B., & Aristidi, E. 2007, *PASP*, 119, 127
- Rauer, H., Fruth, T., & Erikson, A. 2008, *PASP*, 120, 852
- Saunders, W., Lawrence, J. S., Storey, J. W. V., Ashley, M. C. B., Kato, S., Minnis, P., Winker, D., Liu, G., & Kulesa, C. 2009 *PASP*, 121, 976
- Storey, J. W. V. 2005, *Antarctic Science*, 17, 555
- Strassmeier, K. G., et al. 2008, *A&A*, 490, 287
- Taylor, M., Chen, K.-Y., McNeill, J. D., Merrill, J. E., Oliver, J. P., & Wood, F. B. 1988, *PASP*, 100, 1544
- Yang, H. G., et al. 2009, *PASP*, 121, 174
- Yuan, X. Y., et al. 2008, *Proc. SPIE*, 7012, 152
- Zhou, X., & Wu, Z. Y., et al. 2009, *RAA*, submitted
- Zou, H., Zhou, X., & Wu, Z. Y., et al. 2010, *AJ*, submitted