

# Unusual Pulmonary Arterial Filling Defect caused by Systemic to Pulmonary Shunt in the Setting of Chronic Lung Disease Demonstrated by Dynamic 4D CTA

Kianoush Ansari-Gilani<sup>1\*</sup>, Robert C Gilkeson<sup>1</sup>, Edward M Hsiao<sup>2</sup>, Prabhakar Rajiah<sup>1</sup>

1. Department of Radiology, University Hospitals of Cleveland, Case Western Reserve University, Cleveland, Ohio, USA

2. Department of Radiology, Macquarie University Hospital, Macquarie University, Australia

\* **Correspondence:** Kianoush Ansari-Gilani, MD, Department of Radiology, University Hospitals of Cleveland, Case Western Reserve University, Cleveland, OH 44106, USA

✉ [kianoush.ansari@gmail.com](mailto:kianoush.ansari@gmail.com)

Radiology Case. 2015 Nov; 9(11):17-23 :: DOI: 10.3941/jrcr.v9i11.2480

## ABSTRACT

Even though pulmonary embolism is by far the most common cause of filling defect in the pulmonary arterial system, other less common etiologies should be considered especially in the setting of atypical clinical scenario or unusual imaging findings. Unusual pattern of filling defect in the pulmonary artery in the setting of chronic inflammatory/fibrotic parenchymal lung disease should raise the concern for systemic to pulmonary artery shunt. This diagnosis is typically made by conventional angiography. Dynamic 4D CT angiography however can be a safe, noninvasive and effective alternative tool for making such a diagnosis. It has the added value of multiplanar reconstruction capabilities and providing detailed anatomy which can be vital for interventional radiologists when planning their approach for possible intervention. We present 2 cases of such shunts, and illustrate the demonstration of these shunts by using dynamic 4D CT angiography.

## CASE REPORT

### CASE REPORT

In this manuscript we describe 2 cases that show unusual pulmonary artery filling defect raising the question of abnormal systemic to pulmonary artery shunt as the etiology and demonstrate how modern imaging technology can help in elucidating the etiology.

#### Case 1

An 81-year-old man with history of coronary artery disease, and amiodarone treatment for the past 3 years presented with chest pain and hemoptysis. Chest radiograph (Figure 1) showed increase in interstitial markings with distortion of the underlying parenchymal architecture consistent with changes of amiodarone lung toxicity. CT angiogram (Figure 2) showed a non-opacified left upper lobe segmental pulmonary artery with associated small intraluminal

filling defect protruding more proximally into the left main pulmonary artery. Lung window confirmed the presence of interlobular septal thickening and reticulation, consistent with chronic changes of amiodarone lung toxicity and fibrosis (Figure 3). This unusual configuration of the protrusion of the filling defect to the more proximal portion of the pulmonary artery raised the possibility of systemic artery to pulmonary artery shunt, which was subsequently confirmed by using dynamic CT angiography (CTA) of the chest (see interactive image stack 1). Maximum-intensity projection (MIP) image (Figure 4) provided a better depiction of this abnormal communication.

#### Case 2

A 29-year-old woman with cystic fibrosis (CF) presented with hemoptysis and shortness of breath. Her chest radiograph (Figure 5) showed hyperinflation and upper lobe predominant

bronchiectasis in keeping with patient's underlying cystic fibrosis. CT angiogram (Figure 6) showed a filling defect in the bilateral pulmonary arteries with protrusion of the filling defects to the more proximal portion of the pulmonary arterial system and curvilinear areas of non-opacification raising the possibility of systemic artery to pulmonary artery shunt. Lung windows (Figure 7) also showed bronchial wall and peribronchial interstitial thickening with upper lobe predominant bronchiectasis, in keeping with underlying cystic fibrosis. The presence of systemic to pulmonary artery shunt was subsequently confirmed by dynamic CTA (see interactive image stack 2).

## DISCUSSION

### Etiology & Demographics:

Pulmonary embolism (PE) is the most common etiology for the presence of filling defect in the pulmonary artery and its branches [1]. PE is the third most common acute cardiovascular disease after myocardial infarction and stroke and results in thousands of deaths each year [2, 3]. However there are multiple other possible causes for pulmonary arterial filling defects other than PE, which should be considered in the setting of atypical clinical presentation or imaging findings.

Abnormal communication (shunt) between the systemic and pulmonary circulation presenting as a filling defect in the pulmonary artery is rare [4]. It can be caused by chronic inflammation of the lung parenchyma in the setting of chronic lung disease [4]. In chronic inflammation pulmonary circulation is reduced or occluded at the level of the pulmonary arterioles because of hypoxic vasoconstriction, intravascular thrombosis, and vasculitis. This causes proliferation of the bronchial and adjacent systemic arteries trying to replace the pulmonary circulation. Abnormal communication (shunt) can happen during this process [4].

In our patients, the filling defects were due to shunt between systemic and pulmonary circulation. The shunt was caused by chronic inflammatory processes, amiodarone toxicity in the first patient and cystic fibrosis in the second patient, which probably resulted in erosion of pulmonary artery and systemic artery, resulting in a communication between the two. Other causes of chronic inflammatory diseases reported to cause such shunts include tuberculosis and idiopathic pulmonary fibrosis [5]. Congenital and acquired etiologies such as surgery (Coronary artery bypass graft surgery), trauma and neoplasia [6] are other causes of shunts.

### Clinical & Imaging findings:

Patients with systemic to pulmonary artery shunt are usually asymptomatic. Symptoms however can occur due to associated complications such as infection, hemorrhage, pulmonary hypertension and congestive heart failure [7].

Conventional angiography has been used for definitive diagnosis but it is relatively expensive, invasive and time-consuming. It is also associated with higher incidence of complications such as access site hematoma or embolic events [8]. Although the presence of systemic to pulmonary artery

shunts has been reported in the past using conventional angiography, the recent advances in CT scan technology enable demonstration of these shunts and confirming the diagnosis. A 4D CTA (time-resolved CTA, fourth dimension being time) is now possible and can illustrate the temporal information of cardiovascular structures. In addition to generating cross-sectional images, 4D CTA, enables visualization of blood flow dynamics in the vessels. This has been useful in cardiovascular and cerebrovascular pathologies [9, 10]. 4D dynamic CTA, provide enough spatial resolution and temporal resolution to answer many clinically important questions that were previously addressed only by conventional angiography [11]. Generating cross-sectional images is an additional plus associated with these new techniques. MRA can also be used for the diagnosis of systemic to pulmonary artery shunt, but is more expensive, time consuming, prone to artifacts and technically inadequate in 25% of the times [12].

As demonstrated in case 1, this new technique directly demonstrates the flow from a systemic artery to pulmonary artery in systole, which manifests as a filling defect in a static CT image. Thus in cases with suspicion for this anomaly, the high temporal resolution of this technique enables confirmation of the abnormal communication (shunt) between systemic and pulmonary arteries.

### Treatment & Prognosis:

Although the natural course of systemic to pulmonary artery shunt is not well known and definite indications for treatment have not been established [13], due to potential complications, some have recommended that intervention is necessary for asymptomatic patients because of future risk of endocarditis, angina pectoris, and congestive heart failure [14].

Selecting the appropriate therapeutic option is controversial. In the past, surgical intervention was the mainstay of treatment and the preferred procedure was lobectomy [13]. However, recently, embolization has become the preferred method since major surgery and general anesthesia are unnecessary and the loss of lung parenchyma is minimal [13]. Glue (N-butyl-2-cyanoacrylate) and gelfoam sponge particles can be used for those cases that shunts are very small. If the shunts are larger, coils can be used [13]. In addition, in cases with multiple shunts, embolization is more useful. Also embolization can be the primary choice for immediate control of hemoptysis [13].

### Differential Diagnoses:

Acute and chronic PE are the most common causes of filling defect in the pulmonary artery. CT findings in acute PE include intraluminal filling defects, acute angles of the filling defect with the vessel wall, total cutoff of vascular enhancement and enlargement of an occluded vessel [15]. In chronic PE, the filling defect is usually in the periphery of the pulmonary artery lumen or its branches and may show calcification in the chronic thrombus. Other imaging findings in chronic PE include pulmonary arterial bands/pulmonary arterial webs. Signs related to pulmonary hypertension can also be seen which includes pulmonary artery dilation and/or calcification, narrowing of the peripheral pulmonary arteries, and right ventricular hypertrophy/enlargement [16].

There are multiple less common causes of filling defect in the pulmonary artery including systemic to pulmonary shunt, respiratory motion artifact, flow related artifact, partial volume artifact, presence of pulmonary artery catheter and perivascular edema. Primary pulmonary artery sarcoma or secondary tumor thrombus can also be confused with pulmonary embolism. Although there is overlap in the imaging findings of these entities, some clues can be helpful in narrowing the differential diagnosis (table 1).

When the pattern of filling defect in the pulmonary artery is unusual, meaning that the filling defect extends more proximally into the pulmonary artery and there is chronic inflammatory/fibrotic parenchymal lung disease in the background, one should raise the concern for systemic to pulmonary artery shunt as could be seen in our two cases. Dynamic CT angiography is a non-invasive and effective tool in diagnosing this condition. Its ability to provide detailed anatomy with multiplanar reconstruction could aid interventional radiologist in treatment planning.

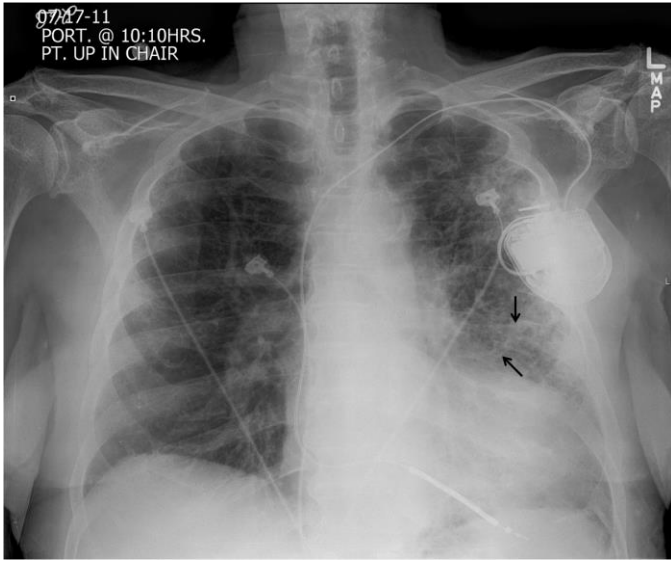
#### TEACHING POINT

Filling defects in the pulmonary artery have many differential diagnoses other than pulmonary embolism. If the filling defect in the pulmonary artery has unusual appearance (extending to the more proximal left pulmonary artery or curvilinear appearance), and especially if this is happening in the setting of underlying chronic parenchymal lung disease, possibility of systemic to pulmonary artery shunt should be raised. 4D CTA (time-resolved CTA) can be used as a non-invasive and effective tool for reaching to this diagnosis. Its ability to provide detailed anatomy and multiplanar reconstruction could aid interventional radiologist in treatment planning.

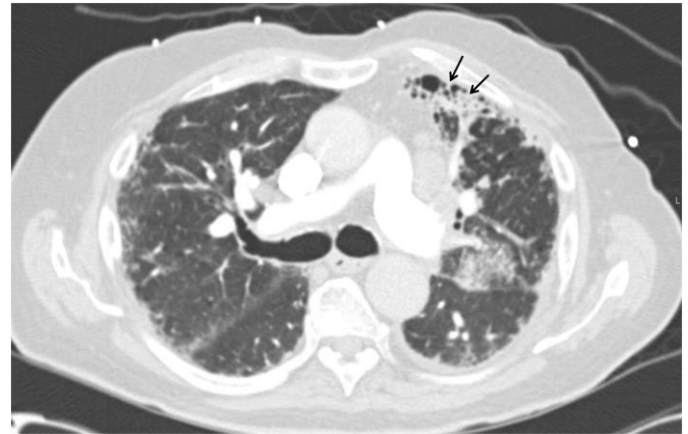
#### REFERENCES

- Wittram C, Maher MM, Yoo AJ, Kalra MK, Shepard JA, McLoud TC. CT angiography of pulmonary embolism: diagnostic criteria and causes of misdiagnosis. *Radiographics*. 2004 Sep-Oct; 24(5):1219-38. PMID: 15371604.
- Anderson FA Jr, Wheeler B, Goldberg RJ, Hosmer DW, Patwardhan NA, Jovanovic B et al. A population-based perspective of the hospital incidence and case fatality rates of deep vein thrombosis and pulmonary embolism: the Worcester DVT study. *Arch Intern Med* 1991; 151:933-938. PMID: 2025141.
- Giuntini C, Ricco GD, Marini C, Melillo E, Palla A. Pulmonary embolism: epidemiology. *Chest* 1995; 107(suppl): 3S-9S. PMID: 7813326.
- Yoon W, Kim JK, Kim YH, Chung TW, Kang HK. Bronchial and nonbronchial systemic artery embolization for life-threatening hemoptysis: a comprehensive review. *Radiographics* 2002; 22:1395-409
- Riehl G, Chaffanjon P, Frey G, Sessa C, Brichon PY. Postoperative systemic artery to pulmonary vessel fistula: analysis of three cases. *Ann Thorac Surg*. 2003 Dec; 76(6):1873-7. PMID: 14667603.
- Jamshidi P, Ghaffari S, Mahmoodi K. Transpulmonary closing of left internal mammary artery to pulmonary artery fistula with polytetrafluoroethylene covered stent: a case report and review of literature. *Cardiol J*. 2009; 16(5):469-72. PMID: 19753528.
- Saito T, Matsuda M, Yamaguchi T, Matsuzaki T, Nakagawa S. A case of a traumatic systemic-pulmonary arteriovenous fistula. *Jpn Heart J* 1975;16:196-203.
- Bendszus M, Koltzenburg M, Burger R, Warmuth-Metz M, Hofmann E, Solymsi L. Silent embolism in diagnostic cerebral angiography and neurointerventional procedures: a prospective study. *Lancet*. 1999; 354:1594-1597. PMID: 10560674.
- Klingebiel R, Siebert E, Diekmann S, Wiener E, Masuhr F, Wagner M, et al. 4-D imaging in cerebrovascular disorders by using 320-slice CT: feasibility and preliminary clinical experience. *Acad Radiol* 2009; 16:123-9. PMID: 19124096.
- Siebert E, Bohner G, Dewey M, Masuhr F, Hoffmann KT, Mews J, et al. 320-slice CT neuroimaging: initial clinical experience and image quality evaluation. *Br J Radiol* 2009; 82:561-70. PMID: 19221186.
- Willems PW, Taeshineetanakul P, Schenk B, Brouwer PA, Terbrugge KG, Krings T. The use of 4D-CTA in the diagnostic work-up of brain arteriovenous malformations. *Neuroradiology*. 2012; 54:123-31. PMID: 21465177.
- Stein PD, Chenevert TL, Fowler SE, Goodman LR, Gottschalk A, Hales CA, Hull RD, Jablonski KA, Leeper KV Jr, Naidich DP, Sak DJ, Sostman HD, Tapson VF, Weg JG, Woodard PK; PIOPED III (Prospective Investigation of Pulmonary Embolism Diagnosis III) Investigators. Gadolinium-enhanced magnetic resonance angiography for pulmonary embolism: a multicenter prospective study (PIOPED III). *Ann Intern Med*. 2010 6;152:434-43
- Lee JK1, Park JH, Kim J, Kim SJ, Lee AR, Lee CH, So YH. Embolization of multiple systemic artery to pulmonary artery fistula with recurrent hemoptysis. *Tuberc Respir Dis*. 2013;75:120-4.
- Yamada Y, Imamura H, Amamoto Y, Ochi M, Nagano K, Ito M. Congenital internal mammary artery-to-pulmonary artery fistulas: a case report. *Heart Vessels* 1987;3:47-9.
- Han D, Lee KS, Franquet T, Müller NL, Kim TS, Kim H, Kwon OJ, Byun HS. Thrombotic and nonthrombotic pulmonary arterial embolism: spectrum of imaging findings. *Radiographics*. 2003 ; 23:1521-39.
- Castañer E, Gallardo X, Ballesteros E, Andreu M, Pallardó Y, Mata JM, Riera L. CT diagnosis of chronic pulmonary thromboembolism. *Radiographics*. 2009;29:31-50.

FIGURES



**Figure 1:** Portable frontal chest radiograph of an 81 year old male with systemic to pulmonary artery shunt and history of amiodarone lung toxicity shows increase in interstitial markings with distortion of the underlying parenchymal architecture, more in the left lung base (arrows), consistent with pulmonary fibrosis. There is also cardiomegaly and a defibrillator in place, in keeping with patient's known history of cardiac dysfunction.



**Figure 3:** 81 year old male with systemic to pulmonary artery shunt. Axial contrast enhanced CT angiogram of the chest in the lung window shows coarse interlobular septal thickening and reticulation (arrows) in the lungs, more on the left, consistent with chronic changes of amiodarone induced lung toxicity and fibrosis.

The CT is acquired on a 64-slice Siemens Somatom Force scanner using pulmonary angiogram protocol (contrast enhanced acquisition at peak pulmonary opacification with 1.25 mm overlapping collimation using 90 cc of Optiray 350 contrast at 120 kVp with tube current modulation and adaptive statistical iterative reconstruction.



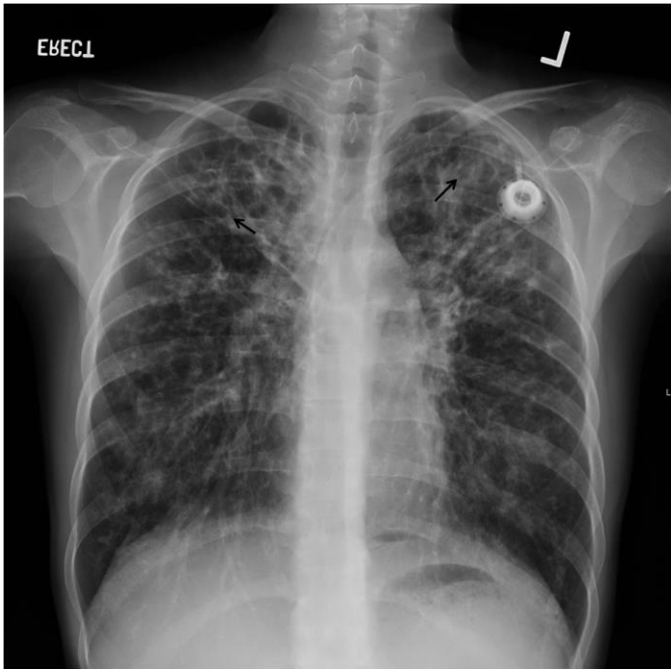
**Figure 2:** 81 year old male with systemic to pulmonary artery shunt. Axial contrast enhanced CT angiogram of the chest in the mediastinal window shows a non-opacified left upper lobe segmental pulmonary artery with associated small intraluminal filling defect (arrow) into the more proximal left pulmonary artery is unusual for pulmonary embolism and therefore raised the possibility of an alternative diagnosis (shunt).

The CT is acquired on a 64-slice Siemens Somatom Force scanner using pulmonary angiogram protocol (contrast enhanced acquisition at peak pulmonary opacification with 1.25 mm overlapping collimation using 90 cc of Optiray 350 contrast at 120 kVp with tube current modulation and adaptive statistical iterative reconstruction.



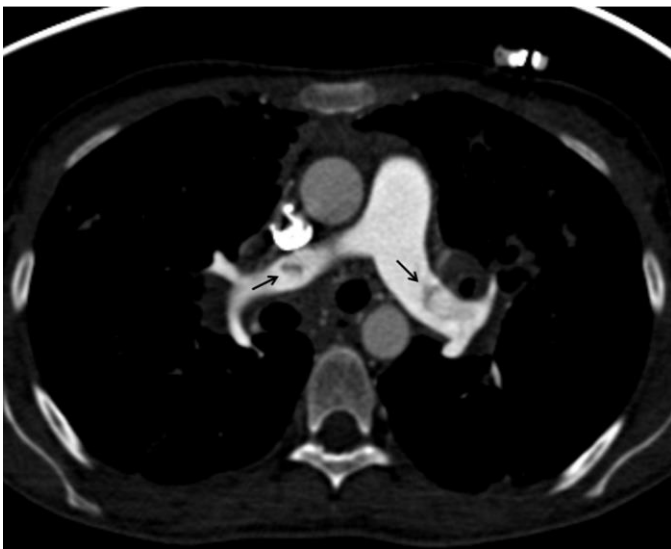
**Figure 4:** 81 year old male with systemic to pulmonary artery shunt. Axial contrast enhanced CT angiogram of the chest using maximum-intensity projection (MIP) provides a clear depiction (arrow) of abnormal communication between systemic and pulmonary artery.

The dynamic CTA is acquired on a 64-slice Siemens Somatom Force scanner, using a spiral 4D mode at 100 kVp, 100 mAs, with 60 mL contrast.



**Figure 7:** 29 year old female with systemic to pulmonary artery shunt in the setting of cystic fibrosis. Axial contrast enhanced CT angiogram of the chest in the lung window shows bronchial wall and peribronchial interstitial thickening with upper lobe predominant bronchiectasis (arrows) typical of Cystic Fibrosis.

CT is acquired on a 64-slice Siemens Somatom Force scanner. The CT is acquired using pulmonary angiogram protocol (contrast enhanced acquisition at peak pulmonary opacification with 1.25 mm overlapping collimation using 90 cc of Optiray 350 contrast at 100 kVp with tube current modulation and adaptive statistical iterative reconstruction.



**Figure 6 (left):** 29 year old female with systemic to pulmonary artery shunt in the setting of cystic fibrosis. Axial contrast enhanced CT angiogram of the chest in the mediastinal window shows amorphous and curvilinear areas of non-opacification and filling defects (arrows) in the bilateral pulmonary arteries. As in the first case, this is unusual for pulmonary embolism which typically presents as a tubular filling defect starting from the more proximal portion of the pulmonary artery and extends to its more distal branches. Therefore possibility of an alternative diagnosis (shunt) was raised.

CT is acquired on a 64-slice Siemens Somatom Force scanner. The CT is acquired using pulmonary angiogram protocol (contrast enhanced acquisition at peak pulmonary opacification with 1.25 mm overlapping collimation using 90 cc of Optiray 350 contrast at 100 kVp with tube current modulation and adaptive statistical iterative reconstruction.

Differential Diagnosis	CT Angiography	4D CTA	Conventional angiography or other imaging modalities
<b>Acute pulmonary embolism</b>	Filling defect in the center of the pulmonary artery lumen or its branches.	The same findings as CTA. No abnormal communication between the systemic and pulmonary artery.	Conventional angiography is gold standard and shows filling defect in the center of the pulmonary artery or its branches.
<b>Chronic pulmonary embolism</b>	Filling defect in the periphery of the pulmonary artery lumen or its branches. Can show calcification in the chronic thrombus. May show pulmonary arterial bands/pulmonary arterial webs. Signs related to pulmonary hypertension can be seen (such as pulmonary artery dilation and/or calcification, narrowing of the peripheral pulmonary arteries, and right ventricular hypertrophy/enlargement)	The same findings as CTA. No abnormal communication between the systemic or pulmonary artery.	Conventional angiography shows filling defect in the periphery of the pulmonary artery or its branches.
<b>Systemic to pulmonary artery shunt</b>	Filling defect in the pulmonary artery with extension of the defect to the more proximal portion of the pulmonary artery.	Abnormal communication of the pulmonary artery to systemic artery or their branches.	Conventional angiography shows the abnormal communication of the pulmonary artery to systemic artery.
<b>Respiratory motion artifact</b>	Can mimic a filling defect, but respiratory motion artifact should be visible and provide clue to the diagnosis.	N/A	N/A
<b>Flow related artifact (caused by inadequate mixing of contrast in the bloodstream).</b>	Can mimic a filling defect but has a swirling appearance which can be helpful in differentiating it from a real defect.	If done, shows no abnormal communication between the systemic or pulmonary artery.	If done, conventional angiography shows no filling defect in the pulmonary artery. Also no abnormal communication between the systemic or pulmonary artery.
<b>Partial volume artifact</b>	Can mimic a filling defect on thicker cuts. Thinner cuts show no such defect.	N/A	N/A
<b>Presence of pulmonary artery catheter</b>	Can produce a filling defect. Appropriate windowing should show the catheter as the cause of defect.	N/A	Catheter can be seen on plain radiograph
<b>Perivascular edema</b>	Can mimic a filling defect on thicker cuts. Thinner cuts show no such defect. Circumferentially surrounding the vessel. Also is generalized and seen in both lungs.	N/A	N/A
<b>Primary pulmonary artery sarcoma or secondary tumor thrombus</b>	Large tumor emboli in the main, lobar, and segmental pulmonary arteries cause filling defects that mimic acute pulmonary thromboembolism. Small tumor emboli that affect subsegmental arteries produce multifocal dilatation or beading of vessels. Reconstruction in coronal and sagittal formats will be useful in showing the tumoral nature of the filling defect. The filling defect may show enhancement. In the case of primary pulmonary artery sarcoma, the border of the tumor may be irregular. There may be also extension of the tumor beyond the vascular margin. May show enhancement.	If done, shows no abnormal communication between the systemic or pulmonary artery.	If done, conventional angiography shows no abnormal communication between the systemic or pulmonary artery.

**Table 1:** Differential diagnosis of filling defect in the pulmonary artery.

<b>Etiology</b>	Abnormal communication of the systemic to pulmonary artery.
<b>Incidence</b>	Much less common than pulmonary embolism which is the most common cause of filling defect in the pulmonary artery and its branches.
<b>Gender Ratio</b>	No specific predilection.
<b>Age predilection</b>	Probably more common in older patients, as it is seen more in patients with underlying chronic inflammatory lung disease.
<b>Risk factors</b>	Chronic inflammatory diseases of the lung such as tuberculosis and idiopathic pulmonary fibrosis. Congenital and acquired etiologies such as surgery (Coronary artery bypass graft surgery), trauma and neoplasia.
<b>Treatment</b>	Surgical intervention such as lobectomy. Endovascular embolization.
<b>Prognosis</b>	Patients are usually asymptomatic, but even asymptomatic patients probably should be treated because of future risk of endocarditis, angina pectoris, and congestive heart failure. Surgical intervention such as lobectomy and embolization are definitive treatment.
<b>Findings on Imaging</b>	CTA: Unusual pattern of filling defect in the pulmonary artery with extension of the filling defect to the more proximal portion of the pulmonary artery. There is also a background of underlying chronic lung disease seen on lung window. Conventional angiography: Abnormal communication of the pulmonary artery to systemic artery. 4D CTA: Temporal resolution of this technique helps to show the abnormal communication of the pulmonary artery to systemic artery.

**Table 2:** Characteristics of systemic to pulmonary artery shunt.

#### ABBREVIATIONS

4D CTA: 4 dimensional computed tomography angiography  
CABG: Coronary artery bypass graft  
CF: Cystic Fibrosis  
CT: computed tomography  
MIP: Maximum-intensity projection  
MRA: Magnetic Resonance Angiography  
PE: Pulmonary Embolism

#### KEYWORDS

Shunt; pulmonary embolism; chronic lung disease; dynamic CT; angiography

#### Online access

This publication is online available at:  
[www.radiologycases.com/index.php/radiologycases/article/view/2480](http://www.radiologycases.com/index.php/radiologycases/article/view/2480)

#### Peer discussion

Discuss this manuscript in our protected discussion forum at:  
[www.radiopolis.com/forums/JRCR](http://www.radiopolis.com/forums/JRCR)

#### Interactivity

This publication is available as an interactive article with scroll, window/level, magnify and more features.  
Available online at [www.RadiologyCases.com](http://www.RadiologyCases.com)

Published by EduRad



[www.EduRad.org](http://www.EduRad.org)

[Log in to My Ulrich's](#)

Macquarie University Library --Select Language--

[Search](#) [Workspace](#) [Ulrich's Update](#) [Admin](#)

Enter a Title, ISSN, or search term to find journals or other periodicals:

1943-0922 

[▶ Advanced Search](#)



Search MultiSearch: [ISSN Search](#) | [Title Search](#)

[Search Results](#)

## Journal of Radiology Case Reports

### Title Details

#### Lists

[Marked Titles](#) (0)

#### Search History

[2052-3211](#) - (1)

[1943-0922](#) - (1)

Save to List Email Download Print Corrections Expand All Collapse All

#### ▼ Basic Description

<b>Title</b>	Journal of Radiology Case Reports
<b>ISSN</b>	1943-0922
<b>Publisher</b>	EduRad
<b>Country</b>	United States
<b>Status</b>	Active
<b>Start Year</b>	2007
<b>Frequency</b>	Monthly
<b>Language of Text</b>	Text in: English
<b>Abstracted / Indexed</b>	Yes
<b>Open Access</b>	Yes <a href="http://www.radiologycases.com/index.php/radiologycases">http://www.radiologycases.com/index.php/radiologycases</a>
<b>Serial Type</b>	Journal
<b>Content Type</b>	Academic / Scholarly
<b>Format</b>	Online
<b>Website</b>	<a href="http://www.radiologycases.com/index.php/radiologycases">http://www.radiologycases.com/index.php/radiologycases</a>

#### ▶ Subject Classifications

#### ▶ Additional Title Details

#### ▶ Publisher & Ordering Details

#### ▶ Online Availability

#### ▶ Abstracting & Indexing

Save to List Email Download Print Corrections Expand All Collapse All





**Honorable Member**

*is in good standing and has been an honorable member of all the Journal of Radiology Case Reports in the last year 2014*

**Premium Member**

**JRCR Member**

*CME discounts  
Priority passes  
Author awards  
Reviewer awards  
Exam certificates  
Honor certificate  
Premium viewer  
Full stack access  
More free for you...*

**Find out more**

[Become a sponsor](#)

[HOME](#)   [ABOUT](#)   [LOG IN](#)   [REGISTER](#)   [SEARCH](#)   [CURRENT](#)   [ARCHIVES](#)

[ANNOUNCEMENTS](#)   [HALL OF FAME](#)   [AWARDS](#)   [CME](#)   [SUBMIT ARTICLE](#)

[Home](#) > [About the Journal](#) > **Editorial Policies**

## Editorial Policies

- » [Focus and Scope](#)
- » [Section Policies](#)
- » [Peer Review Process](#)
- » [Open Access Policy](#)
- » [Archiving](#)
- » [Journal of Radiology Case Reports - a peer-reviewed radiology case report journal](#)

## Focus and Scope

This journal is dedicated to provide open-access, high-quality, peer-reviewed Radiology case reports and

educational review articles. We encourage everybody to submit interesting Radiology cases or Radiology teaching related articles. Medical/surgical articles with emphasis on diagnostic imaging are also welcome. Blinded review of cases allows a fair and unbiased publication of Radiology case reports.

The "**Journal of Radiology Case Reports**" is a PubMed/Medline indexed new kind of journals for Radiology case reports. The peer review and editorial process conforms to international standards of peer reviewed scientific journals. However there are significant differences: This journal is dedicated solely to Radiology case reports. Case reports are usually "neglected" by large or traditional journals, mainly due to competition with "higher value" articles (review, original research etc.) for valuable space in the hardcopy version of the journal. As a consequence, it becomes increasingly difficult to publish interesting casuistics in a peer-reviewed environment. This was one reason why this online journal was born - to give the opportunity to publish Radiology case reports.

**Interactivity** is unique and allows to view the cases as seen on workstations - with scroll functions and ability to "window and level", magnify and other features.

Traditionally, case reports provide only selected images which demonstrate the pathology (or only pertinent findings). This has not only a limited learning value, because the user only receives selected information and cannot "find out" the answer him/herself. But, what is more important is, that this kind of provided information does not resemble the "real life" at the radiologist's workstation. When we open a study, the pathology does not jump immediately in our eyes on the first image. We have to scroll through the stack of images and have to find the pathology ourselves. Furthermore, scrolling through the stack of images helps to obtain an overview of the entire environment.

**Review process** is blinded and exceptional by providing peer-review by at least 3 reviewers. The review process can take up to 6-12 weeks, depending on the amount of new submissions, which has increased significantly in the last years.

As in traditional journals, the published **articles are fully citable** in this journal. Each article receives a DOI (Digital Object Identifier) - these days every modern journal assigns its articles a DOI for easier referencing. The JRCR is also [Medline/PubMed indexed](#). The articles are available in multiple formats (Abstract, HTML, PDF, Interactive)

#### What kind of articles are suited for this journal?

Any kind of medical imaging related articles (case report, case series, review, original research, tutorial) are welcomed, which:

- report and explain unusual or unexpected findings.
- promote knowledge about known and new disease processes.
- expand or refresh knowledge about anatomy in imaging.
- help, better understand technical aspects of medical imaging.
- new scientific data on a smaller scale (studies on small populations, few patients) which could e.g. help, contributing to larger meta-analysis studies.
- other uptodate knowledge in medical imaging.

---

## Section Policies

### General Radiology

Editors

Roland Talanow, EduRad

Open  
Submissions

Indexed

Peer Reviewed

### Neuroradiology

Editors

Laurence Eckel, Mayo Clinic

Osama Gomaa, University of Miami

Allison Grayev, University of Wisconsin

Ulf Jensen-Kondering, Department of Radiology and Neuroradiology, Campus Kiel, University of Schleswig-Holstein

Majid Khan, University of Mississippi Medical Center

Manoj Kumar, University of Arkansas for Medical Sciences

Augusto Mamere, Barretos Cancer Hospital  
John Morgan, Yale University, School of Medicine  
Chetan Shah, Mayo Clinic and University of Florida

Open Submissions       Indexed       Peer Reviewed

## Pediatric Radiology

Editors

Arie Franco, Georgia Health Sciences University  
Shilpa Hegde, University of Arkansas for Medical Sciences  
Sanjay Prabhu, Boston Children's Hospital  
Chetan Shah, Mayo Clinic and University of Florida

Open Submissions       Indexed       Peer Reviewed

## Musculoskeletal Radiology

Editors

Patricia Afonso, University Nova de Lisboa  
Sayed Ali, Temple University Hospital  
James Evans, Radiology Associates of Oklahoma  
Stephen Hatem, The Cleveland Clinic  
Apostolos Karantanas, University of Crete  
George Paraskevas, Aristotle University of Thessaloniki  
Sanjay Patel, Royal Derby Hospital

Open Submissions       Indexed       Peer Reviewed

## Genitourinary Radiology

Editors

Arnold Friedman, University of Arizona  
Robert Marks, Naval Medical Center San Diego  
Haytham Shebel, Urology and Nephrology Center Mansoura University  
Rafel Tappouni, Penn State College of Medicine

Open Submissions       Indexed       Peer Reviewed

## Gastrointestinal Radiology

Editors

Rahat Brar, Fortis Hospital  
Arnold Friedman, University of Arizona  
Robert Marks, Naval Medical Center San Diego  
Stefano Palmucci, University Hospital "Policlinico-Vittorio Emanuele"  
Miguel Ramalho, Hospital Garcia de Orta  
Rafel Tappouni, Penn State College of Medicine  
Thomas Vogl, University of Frankfurt/Main

Open Submissions       Indexed       Peer Reviewed

## Obstetric & Gynecologic Radiology

Editors

Bernadette Beranger

Open Submissions       Indexed       Peer Reviewed

## Interventional Radiology

Editors

Ahmed Abdel Aal, University of Alabama at Birmingham  
Mohammad al-Shatouri, Suez Canal University Hospital  
Paresh Desai, Goa Medical College  
Osama Gomaa, University of Miami  
Matthew Tam, Southend University Hospital NHS Foundation Trust  
Thomas Vogl, University of Frankfurt/Main

Open Submissions  Indexed  Peer Reviewed

## Thoracic Radiology

Editors

Hans-Holger Jend, Klinikum Bremen-Ost  
Abhishek Mahajan, Indian Medical Council  
Tan-Lucien Mohammed, Cleveland Clinic  
Xavier Montet, Geneva University Hospital and Geneva Medical School

Open Submissions  Indexed  Peer Reviewed

## Breast Imaging

Editors

Jeon-Hor Chen, University of California Irvine  
Fernando Collado-Mesa, University of Miami Miller School of Medicine  
Laurie Fajardo, University of Iowa  
Markus Holzhauer, Windsong Radiology  
Gopal Vijayaraghavan, University of Massachusetts, School of Medicine

Open Submissions  Indexed  Peer Reviewed

## Cardiac Imaging

Editors

Osama Gomaa, University of Miami

Open Submissions  Indexed  Peer Reviewed

## Emergency Radiology

Editors

Stephen Hatem, The Cleveland Clinic  
Sridhar Shankar, University of Tennessee

Open Submissions  Indexed  Peer Reviewed

## Nuclear Medicine / Molecular Imaging

Editors

Mohab Alexander, NHB  
Humayun Bashir, Shaukat Khanum Memorial Cancer Hospital & Research Centre  
Bohdan Bybel, Health Sciences Centre Winnipeg  
Gang Cheng, Philadelphia VA Medical Center  
Arie Franco, Georgia Health Sciences University  
Osama Gomaa, University of Miami  
Gaurav Malhotra, Radiation Medicine Centre, Bhaba Atomic Research Centre  
Eliot Siegel, University of Maryland  
Kamal Singh, David Grant Medical Center, Travis AFB

Open Submissions  Indexed  Peer Reviewed

## Protocols & Contrast Media

## Editors

Frederik Giesel, University Hospital Heidelberg  
Chetan Shah, Mayo Clinic and University of Florida

Open Submissions       Indexed       Peer Reviewed

## Technical/IT & Innovative

### Editors

Frederik Giesel, University Hospital Heidelberg  
Elizabeth Krupinski, University of Arizona  
Eliot Siegel, University of Maryland  
Roland Talanow, EduRad

Open Submissions       Indexed       Peer Reviewed

## Miscellaneous

### Editors

Roland Talanow, EduRad

Open Submissions       Indexed       Peer Reviewed

## Editorial

### Editors

Roland Talanow, EduRad

Open Submissions       Indexed       Peer Reviewed

## Letter to the Editor / Opinion

### Editors

Roland Talanow, EduRad

Open Submissions       Indexed       Peer Reviewed

## Interesting Image

### Editors

Roland Talanow, EduRad

Open Submissions       Indexed       Peer Reviewed

## Signs in Radiology

### Editors

Roland Talanow, EduRad

Open Submissions       Indexed       Peer Reviewed

---

## Peer Review Process

Three independent reviewers are asked to judge the submission based on the journal criteria. The review process is double blinded and - due to the increasing amount of submissions - might take up to two months. Selection of reviewers is based on their field of expertise and review interests.

A Word document template provides some rough reviewing guidelines at the following URL:

[http://www.radiologycases.com/Template\\_Reviewer\\_Case\\_Report.doc](http://www.radiologycases.com/Template_Reviewer_Case_Report.doc)

Reviewers may download this document and fill out the appropriate sections.

### **Awards**

As an appreciation of their valuable time and work, we honor our reviewers in the end of the year issue of this journal as well as in the "Hall of Fame" on the journal website.

### **Reviewer evaluation**

To ensure also a high quality review, reviewers are rated on a 5 point scale and reviewers with an average of 3.5 or more points will be honored as mentioned above.

One point is assigned for each of the following:

- The reviewer responded to the review invitation within the requested time frame.
- The reviewer reviewed the manuscript within the requested time frame.
- The review addressed all aspects which were asked for in the reviewer guidelines (e.g. English, author guidelines, image modalities)
- Reviewer gave suggestions to improve the revised version
- The review was written in a friendly and encouraging way

Each reviewer is evaluated based on these factors. The overall score will determine if this person will be eligible for future reviews or deleted from the reviewer database.

---

## **Open Access Policy**

This journal provides immediate open access to its content on the principle that making research and education freely available to the public supports a greater global exchange of knowledge.

This work is licensed under [CC BY-NC-ND](#).

---

## **Archiving**

This journal utilizes the LOCKSS system to create a distributed archiving system among participating libraries and permits those libraries to create permanent archives of the journal for purposes of preservation and restoration. [More...](#)

Furthermore, The Journal of Radiology Case Reports is indexed in PubMed/Medline. [More...](#)

---

## **Journal of Radiology Case Reports - a peer-reviewed radiology case report journal**

Interactive, high quality, educational, open-access and peer-reviewed radiology case reports and review articles. Indexed in [PubMed/Medline](#).